



Our Favourites

Enjoy a cruise around the harbour

Take a Cascade Brewery tour

Visit the historic town of Richmond on the way to Port Arthur Historic Site

Walk in the treetops at Tahune AirWalk

Hobart encompasses everything we love about Tasmania. It's a city that's come of age with its contemporary art, culture and dining scene. And then there's that incredible harbour that entices locals and tourists to its waters; where fishing, sailing and relaxing are common pastimes.

With so much fresh fare, Hobart's fine dining chefs are spoilt for choice, and so are you. North Hobart's renowned restaurant strip is a gourmet dream, and surrounding wine country rates highly too. Simply step outside the city to discover the Coal River, Derwent and Huon Valley wine regions.

Hobart's hard to leave, but Richmond beckons, and this very pretty town will draw you in with its 19th century Georgian buildings and Australia's oldest bridge. Port Arthur Historic Site is a Tasmanian landmark dating back to 1830 as a penal settlement, and it's a place that remains eerie yet beautiful. South of Hobart is fabulous Bruny Island. Beautiful beaches, tall cliffs and lush countryside make this a tranquil yet unpredictable place.

Travel on to Huonville, where more than half of Tasmania's apples are grown. This is orchard central, bursting with plums, cherries, pears and apricots. Walk through treetops – you can! Tahune AirWalk is a 597 metre walkway set above the Tahune Forest Reserve and its eucalypt forest.

FIND YOUR ACCOMMODATION

HOBART

REF.	APARTMENTS	PAGE
25	Grosvenor Court Apartments ★★★★★	18
22	Leisure Inn Woolmers Inn ◆◆◆◆	17
17	Mantra One Sandy Bay Road ◆◆◆◆	19
2	The Old Woolstore Apartment Hotel ★★★★★☆	21
18	Salamanca Inn ★★★★★☆	22
20	Salamanca Terraces ◆◆◆◆◆	22
19	Somerset on Salamanca ★★★★★	20
6	Somerset on the Pier ★★★★★☆	22
4	Zero Davey Boutique Apartments ◆◆◆◆◆	23

REF.	HOTELS	PAGE
13	Grand Mercure Hadleys Hotel ★★★★★	18
5	The Henry Jones Art Hotel ◆◆◆◆◆	24
8	Hobart Tower Hotel ◆◆◆◆	16
7	Hotel Collins ◆◆◆◆◆	20
3	Hotel Grand Chancellor Hobart ★★★★★☆	21
26	The Islington Hotel ★★★★★	24
15	Leisure Inn Hobart Macquarie ◆◆◆◆◆	16
12	Leisure Inn Waterfront Lodge ◆◆◆◆	16
21	Lenna of Hobart ★★★★★	19
11	The Lodge on Elizabeth ★★★★★	18
14	Mercure Hobart ★★★★★	19
23	Motel 429 Sandy Bay Road ◆◆◆◆◆	17
10	Quality Hobart Midcity Hotel ★★★★★☆	17
1	Quality Hotel Hobart Airport ★★★★★	20
16	Quality Inn Macquarie Manor ◆◆◆◆◆	21
9	Rydges Hobart ★★★★★☆	17
24	Wrest Point ★★★★★☆	23

BEYOND HOBART

Refer to map on page 7

REF.	APARTMENTS	PAGE
4	Base Camp Tasmania ◆◆◆◆◆	25
7	Bruny Island Explorers Cottages ★★★★★☆	27
8	Driftwood Cottages ◆◆◆◆◆	26
1	Fox and Hounds Inn ★★★★★☆	24
2	Harpers on the Beach ◆◆◆◆◆	25
5	Huon Bush Retreats ◆◆◆◆◆	26
8	The Peninsula Experience ◆◆◆◆◆	26
1	Port Arthur Villas ★★★★★	24
1	Stewarts Bay Lodge ★★★★★☆	25

REF.	HOTELS	PAGE
3	Hatchers Richmond Manor ◆◆◆◆◆	25
9	The Priory Country Lodge ◆◆◆◆◆	27
6	Southern Lights Hotel ◆◆◆◆◆	26



Hobart Tower Motel ◆◆◆



300 Park Street, New Town

PROPERTY FEATURES:

- Room service (limited)
- Guest laundry
- Parking

ACCOMMODATION FEATURES:

- Tea/coffee making facilities
- Refrigerator

Room serviced daily

Great value accommodation ideally located beside the Brooker Highway, and just a few minutes drive from the city centre.

City Centre 2.2km
Map page 15 Ref. 8

From **\$78** PER ROOM PER NIGHT*

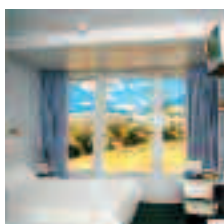
1 OCT 10 – 31 MAR 11	ADULTS	1 NT	3 NTS	5 NTS
Budget	1 to 2	84	252	420
Standard	1 to 2	96	288	480
1 – 30 APR, 20 SEP 11 – 31 MAR 12	ADULTS	1 NT	3 NTS	5 NTS
Budget	1 to 2	88	264	440
Standard	1 to 2	100	300	500
Family	1 to 4	136	408	680
1 MAY – 19 SEP 11	ADULTS	1 NT	3 NTS	5 NTS
Budget	1 to 2	78	234	390
Standard	1 to 2	90	270	450
Family	1 to 4	126	378	630

Children 0 to 2 years – cot free of charge.
3 to 14 years – \$14 per child per night when sharing with 2 adults.

Max capacity Budget – 2, Standard – 3, Family – 6.

HTMHBA

Leisure Inn Waterfront Lodge ◆◆◆



153 Risdon Road, New Town

PROPERTY FEATURES:

- Pool
- Barbecue area
- Guest lounge
- Guest laundry
- Parking

ACCOMMODATION FEATURES:

- Tea/coffee making facilities
- Ironing facilities
- All rooms non smoking

Room serviced daily

A peaceful location beside a marina on the banks of the Derwent River, close to Hobart's CBD and southern Tasmania's tourist attractions.

City Centre 6km
Map page 15 Ref. 12



From **\$136** PER ROOM PER NIGHT*

1 OCT – 23 DEC 10, 16 JAN – 31 MAR, 1 – 30 APR, 1 OCT – 28 DEC 11, 5 JAN – 31 MAR 12	ADULTS	1 NT	3 NTS	5 NTS
Family	1 to 4	160	408	800
1 MAY – 30 SEP 11	ADULTS	1 NT	3 NTS	5 NTS
Family	1 to 4	136	408	680

Other prices apply 24 Dec 10 – 15 Jan 11, 29 Dec 11 – 4 Jan 12.

Children 0 to 2 years – cot/bed charge payable direct.
3 to 11 years – free when sharing with an adult and using existing bedding.

Max capacity 4.

LIWHBA

Leisure Inn Hobart Macquarie ◆◆◆◆



167 Macquarie Street, Hobart

Leisure Inn Hobart Macquarie, recently refurbished is as central as it gets with the city at your doorstep. A leisurely stroll to famous Battery Point, Salamanca Place and Hobart's waterfront. After a busy day of sightseeing, be sure to relax over a meal and unwind with a drink at the hotel's on-site restaurant and bar. Hobart Macquarie's modern appealing hotel suites are the perfect base for a Hobart holiday.

PROPERTY FEATURES:

- Restaurant
- Bar
- Guest laundry
- Parking (limited undercover security)

ACCOMMODATION FEATURES:

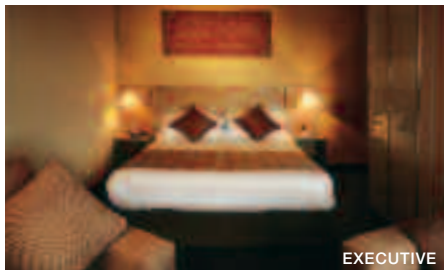
- Heating
- Tea/coffee making facilities
- Refrigerator
- Internet access (broadband)
- Hair dryer

Room serviced daily

City Centre 750m
Map page 15 Ref. 15



From **\$129** PER ROOM PER NIGHT*



EXECUTIVE

1 OCT – 24 DEC 10, 3 JAN – 30 APR, 1 OCT – 28 DEC 11, 5 JAN – 31 MAR 12	ADULTS	1 NT	3 NTS	5 NTS
Express	1 to 2	150	450	750
Standard	1 to 2	176	528	880
Executive	1 to 2	224	672	1120
1 MAY – 30 SEP 11	ADULTS	1 NT	3 NTS	5 NTS
Express	1 to 2	129	387	645
Standard	1 to 2	150	450	750
Executive	1 to 2	193	579	965

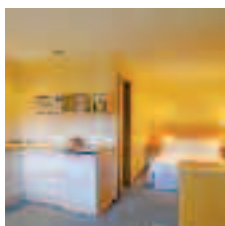
Other prices apply 25 Dec 10 – 2 Jan 11, 29 Dec 11 – 4 Jan 12. Room and breakfast prices also available.

Children 0 to 12 years – free when sharing with 2 adults and using existing bedding.

Max capacity Express/Executive – 2, Standard – 3.

LIMHBA

Leisure Inn Woolmers Inn ◆◆◆◆



Leisure Inn Woolmers Inn offers spacious, modern, self-contained apartments perfectly located in the fashionable harbourside suburb of Sandy Bay.

City Centre 1km
Map page 15 Ref. 22

123-127 Sandy Bay Road, Sandy Bay

PROPERTY FEATURES:

- Guest laundry
- Parking

ACCOMMODATION FEATURES:

- Limited cooking facilities
- Tea/coffee making facilities
- Internet access (wireless)
- Cable TV
- Ironing facilities
- Hair dryer
- All rooms non smoking

Room serviced daily



From **\$95** PER ROOM PER NIGHT*

1 OCT 10 – 31 MAR, 1 OCT – 28 DEC 11, 5 JAN – 31 MAR 12	ADULTS	1 NT	3 NTS	5 NTS
Studio	1 to 2	133	399	665
1 APR – 30 SEP 11	ADULTS	1 NT	3 NTS	5 NTS
Studio	1 to 2	126	378	630

Other prices apply 29 Dec 11 – 4 Jan 12.

Children 0 to 11 years – free when sharing with 2 adults and using existing bedding.

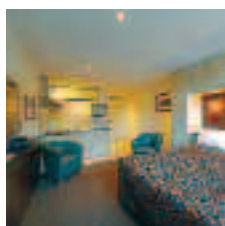
Max capacity 2.

WLMHBA

TRAVELPOINT BONUS

FREE Night Offer: Stay 4 nights, pay for 3, valid 1 May – 30 Sep 11.

Motel 429 Sandy Bay Road ◆◆◆◆



Located on the waterfront in Sandy Bay opposite the casino and just minutes drive from Salamanca Market, shopping, restaurants and Hobart's CBD.

City Centre 3km
Map page 15 Ref. 23

429 Sandy Bay Road, Sandy Bay

PROPERTY FEATURES:

- Barbecue area
- Gymnasium
- Guest laundry

ACCOMMODATION FEATURES:

- Air-conditioning (except Standard)
- Heating
- Microwave
- Tea/coffee making facilities
- Cable TV
- Safe (except Standard)
- Ironing facilities
- Hair dryer

Room serviced daily

From **\$130** PER ROOM PER NIGHT*

1 OCT 10 – 30 SEP 11	ADULTS	1 NT	3 NTS	5 NTS
Standard/Family	1 to 2	130	390	650
Deluxe	1 to 2	155	465	775
Deluxe Waterview	1 to 2	170	510	850
1 OCT 11 – 31 MAR 12	ADULTS	1 NT	3 NTS	5 NTS
Standard/Family	1 to 2	130	390	650
Deluxe	1 to 2	160	480	800
Deluxe Waterview	1 to 2	170	510	850

3 night minimum stay applies 29 Dec 11 – 2 Jan 12. Other room types also available.

Children 0 to 2 years – cot/bed charge payable direct. 3 to 15 years – adult prices apply.

Max capacity Standard/Deluxe/Deluxe Waterview – 2, Family – 4.

MOTHBA

Quality Hobart Midcity Hotel ★★☆☆



Ideally located in the CBD and just a short stroll to the famous docks and Salamanca Markets.

City Centre 100m
Map page 15 Ref. 10

Corner Elizabeth and Bathurst Streets, Hobart

PROPERTY FEATURES:

- 24 hour reception
- Restaurant ▪ Bar
- Room service (limited)
- Guest laundry
- Parking

ACCOMMODATION FEATURES:

- Air-conditioning
- Tea/coffee making facilities
- Internet access (wireless)
- Ironing facilities ▪ Hair dryer

Room serviced daily

Superior ★★☆☆



From **\$105** PER ROOM PER NIGHT*

1 APR – 31 AUG 11 [^]	ADULTS	1 NT	4 NTS	6 NTS
Studio	1 to 2	139	417	695
1 SEP 11 – 31 MAR 12 ⁺	ADULTS	1 NT	4 NTS	7 NTS
Studio	1 to 2	160	640	960

Other prices apply 1 Oct 10 – 31 Mar 11. Other room types also available.

Children 0 to 11 years – free when sharing with an adult and using existing bedding.

Max capacity Studio – 2.

QUAHBA

TRAVELPOINT EXCLUSIVE

FREE bottle of wine for stays of 2 nights or more, valid 1 Apr – 31 Aug 11.

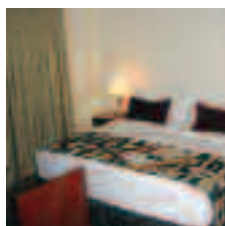
TRAVELPOINT BONUS

[^] FREE Night Offer: Stay 4 nights, pay for 3.

⁺ FREE Night Offer: Stay 7 nights, pay for 6.

(Prices include 1 free night where applicable)

Rydges Hobart ★★☆☆



A boutique hotel, featuring antique suites which capture the essence of historic Hobart; the perfect base to explore the city's spectacular sights.

City Centre 1.8km
Map page 15 Ref. 9

Cnr Argyle and Lewis Sts, North Hobart

PROPERTY FEATURES:

- 24 hour reception
- Restaurant ▪ Bar
- Room service (limited)
- Sauna
- Pool (outdoor)
- Internet access (wireless) ▪ Parking
- Guest laundry ▪ Non smoking

ACCOMMODATION FEATURES:

- Air-conditioning (Superior Suites)
- Cable TV ▪ Limited cooking facilities
- Mini bar ▪ Tea/coffee making facilities
- Internet access (broadband)
- Ironing facilities ▪ Hair dryer

Room serviced daily

From **\$105** PER ROOM PER NIGHT*

1 APR – 31 OCT 11, 1 – 31 MAR 12 [^]	ADULTS	1 NT	4 NTS	6 NTS
Manor Twin Suite/Manor King Suite	1 to 2	140	420	700
1 NOV 11 – 29 FEB 12	ADULTS	1 NT	3 NTS	5 NTS
Manor Twin Suite/Manor King Suite	1 to 2	160	480	800

Other prices apply 1 Oct 10 – 31 Mar 11. Other room types also available. Room and Breakfast prices also available.

Children 0 to 11 years – free when sharing with an adult and using existing bedding.

Max capacity 4.

RYDHBA

TRAVELPOINT EXCLUSIVE

FREE Tasmanian cheese tasting plate for stays of 2 nights or more.

TRAVELPOINT BONUS

[^] FREE Night Offer: Stay 4 nights, pay for 3.

(4 and 6 night prices include 1 free night)

Offers not combinable.

Grand Mercure Hadleys Hotel ★★★★★



34 Murray Street, Hobart

Hadleys Hotel is ideally located in the heart of Hobart's central business district within easy walking distance to the shopping precincts. This iconic hotel, established since 1834, is a premier destination in Hobart. With well appointed rooms, larger on average than most modern hotels and extra touches to spoil make this hotel home away from home.

Restaurant 1834 is open daily for breakfast and dinner, and lunch on weekdays. The superb selection of modern Australian cuisine is complemented by the seasonal produce and wine Tasmania is famous for.

PROPERTY FEATURES:

- 24 hour reception
- Restaurant
- Bar
- Room service (limited)
- Guest lounge
- Guest laundry

ACCOMMODATION FEATURES:

- Heating
- Tea/coffee making facilities
- Mini bar
- CD/DVD player
- Internet access (wireless)
- Ironing facilities
- Hair dryer

Room serviced daily

City Centre 200m
Map page 15 Ref. 13

From **\$128** PER ROOM PER NIGHT*



5 JAN – 31 MAR 11	ADULTS	1 NT	3 NTS	5 NTS
Standard	1 to 2	179	537	895
Superior	1 to 2	199	597	995
1 APR – 30 SEP 11 [^]	ADULTS	1 NT	3 NTS	5 NTS
Standard	1 to 2	191	382	764
Executive	1 to 2	211	422	844
1 OCT – 27 DEC 11, 3 JAN – 31 MAR 12	ADULTS	1 NT	3 NTS	5 NTS
Standard	1 to 2	211	633	1055
Executive	1 to 2	231	693	1155

Other prices apply 1 Oct 10 – 4 Jan 11, 28 Dec 11 – 2 Jan 12.

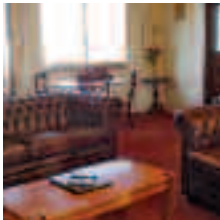
Children 0 to 11 years – up to 2 children free when sharing with an adult and using existing bedding.

Max capacity 2. **HADHBA**

TRAVELPOINT BONUS

[^] FREE Night Offer: Stay 3 nights, pay for 2.
(3 and 5 night prices include 1 free night)

Grosvenor Court Apartments ★★★★★



Superbly located in the quiet streets of Sandy Bay. The spacious rooms feature a blend of classic and contemporary style.

City Centre 2km
Map page 15 Ref. 25

42 Grosvenor Street, Sandy Bay

PROPERTY FEATURES:

- Room service (limited)
- Barbecue
- DVD library
- Internet access (wireless)
- Guest laundry
- Parking

ACCOMMODATION FEATURES:

- Heating
- Fan
- Electric blankets
- Kitchen with microwave
- Mini bar
- Cable TV
- CD/DVD player
- Internet access (wireless)
- Ironing facilities
- Hair dryer
- All rooms non smoking

Room serviced daily

From **\$143** PER ROOM PER NIGHT*

22 DEC 10 – 31 MAR 11	ADULTS	1 NT	3 NTS	5 NTS
Studio	1 to 2	165	495	825
2 Bedroom	1 to 2	217	651	1085
1 APR – 31 MAY 11	ADULTS	1 NT	3 NTS	5 NTS
Studio	1 to 2	153	459	765
2 Bedroom	1 to 2	207	621	1035
1 JUN – 31 AUG 11	ADULTS	1 NT	3 NTS	5 NTS
Studio	1 to 2	143	429	715
2 Bedroom	1 to 2	196	588	980
22 DEC 11 – 31 MAR 12	ADULTS	1 NT	3 NTS	5 NTS
Studio	1 to 2	170	510	850
2 Bedroom	1 to 2	225	675	1125

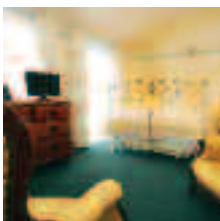
Other prices apply for 1 Oct – 31 Oct 10, 1 Nov – 21 Dec 10, 1 Sep – 31 Oct 11, 1 Nov – 21 Dec 11. 7 night minimum stay applies 22 Dec 10 – 8 Jan 11. Property is closed 25 Dec 11 – 1 Jan 12.

Children 0 to 1 years – cot/bed charge payable direct.
2 to 14 years – adult prices apply.

Max capacity Studio – 3, 2 Bedroom – 6.

GROHBA

The Lodge on Elizabeth ★★★★★



Experience the grace and grandeur of this stately Georgian Mansion, located just a short stroll to restaurants and the CBD.

City Centre 800m
Map page 15 Ref. 11

249 Elizabeth Street, Hobart

PROPERTY FEATURES:

- Library
- Guest lounge
- Internet access (wireless)
- Laundry/dry cleaning service
- Guest laundry
- Non smoking

ACCOMMODATION FEATURES:

- Heating
- Fan
- Tea/coffee making facilities
- Internet access (wireless and broadband)
- Spa bath (Spa room)
- Ironing facilities
- Hair dryer

Room serviced daily

From **\$130** PER ROOM PER NIGHT*

1 OCT 10 – 30 APR 11, 1 OCT 11 – 31 MAR 12	ADULTS	1 NT	3 NTS	5 NTS
Standard Ensuite	2	150	450	750
Spa Room	2	170	510	850
Cottage	2	195	585	975
1 MAY – 30 SEP 11	ADULTS	1 NT	3 NTS	5 NTS
Standard Ensuite	1 to 2	130	390	650
Spa Room	1 to 2	150	450	750
Cottage	1 to 2	170	510	850

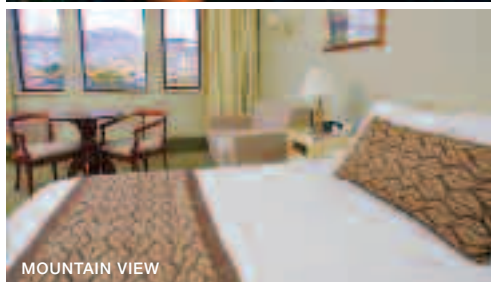
Sole use prices also available.

Includes Light breakfast daily.

Children 0 to 13 years – not catered for.

Max capacity Standard Ensuite – 4, Spa Room – 3, Cottage – 2.
LODHBA

Lenna of Hobart ★★★★★



20 Rynnymede Street, Battery Point

Lenna of Hobart is a colonial boutique hotel combining modern convenience with period elegance.

Situated right in the heart of historic Sullivan's Cove, Lenna of Hobart is adjacent to fashionable Salamanca Place and just a short walk to the waterfront and city centre.

The exclusive Lenna Penthouses are set atop the Hotel and offer 360 degree panoramic views of Hobart's harbour and mountains.

PROPERTY FEATURES:

- Restaurant ▪ Cocktail bar ▪ Room service (24 hour)
- Internet access (wireless) ▪ Guest laundry ▪ Parking

ACCOMMODATION FEATURES:

- Tea/coffee making facilities
- Mini bar ▪ Safe ▪ Cable TV
- Ironing facilities ▪ Hair dryer

Room serviced daily

City Centre 500m

Map page 15 Ref. 21

From **\$235** PER ROOM PER NIGHT*



2 BEDROOM PENTHOUSE

1 OCT 10 – 30 SEP 11	ADULTS	1 NT	2 NTS	5 NTS
Mountain View	1 to 2	235	470	1175
Park View	1 to 2	245	490	1225
Harbour View Suite	1 to 2	345	690	1725
2 Bedroom Penthouse	1 to 4	N/A	1900	4750

1 OCT 11 – 31 MAR 12	ADULTS	1 NT	2 NTS	5 NTS
Mountain View	1 to 2	235	470	1175
Park View	1 to 2	255	510	1275
Harbour View Suite	1 to 2	350	700	1750
2 Bedroom Penthouse	1 to 4	N/A	1990	4975

3 night minimum stay applies when stay includes 31 Dec 10. 4 night minimum stay applies 28 Dec 11 – 3 Jan 12. Other room types also available.

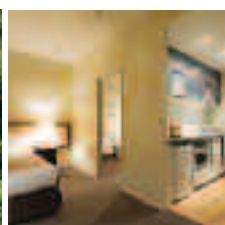
Children 0 to 2 years – cot free of charge.
3 to 14 years – adult prices apply.
Children under 16 years not catered for in 2 Bedroom Penthouse.

Max capacity Mountain View/Park View – 3, Harbour View Suite – 2, 2 Bedroom Penthouse – 4. **LENHBA**

TRAVELPOINT BONUS

\$50 food and beverage credit per room for stays of 2 nights, or \$100 food and beverage credit per room for stays of 3 nights or more, valid 1 May – 30 Sep 11.

Mantra One Sandy Bay Road ◆◆◆◆



1 Sandy Bay Road, Hobart

PROPERTY FEATURES:

- Guest laundry
- Lift
- Parking (limited)

ACCOMMODATION FEATURES:

- Air-conditioning
- Limited cooking facilities with microwave
- Cable TV
- CD/DVD player
- Washer/dryer
- Ironing facilities
- All rooms non smoking

Room serviced daily

City Centre 500m

Map page 15 Ref. 17

From **\$189** PER ROOM PER NIGHT*

1 OCT 10 – 31 MAR 11	ADULTS	1 NT	2 NTS	5 NTS
1 Bedroom	1 to 2	229	458	1145
1 Bedroom Executive	1 to 2	259	518	1295

1 APR – 16 DEC 11, 16 JAN – 31 MAR 12	ADULTS	1 NT	2 NTS	5 NTS
1 Bedroom	1 to 2	239	378	945
1 Bedroom Executive	1 to 2	249	398	995

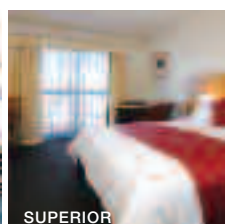
2 night minimum stay applies for Friday and Saturday night stays. Other prices apply 17 Dec 11 – 15 Jan 12.

Children 0 to 12 years – free when sharing with 1 adult and using existing bedding.

Max capacity 3.

MANHBA

Mercure Hobart ★★★★★



SUPERIOR

156 Bathurst Street, Hobart

PROPERTY FEATURES:

- 24 hour reception
- Restaurant
- Bar
- Room service (24 hour)
- Parking (valet)

ACCOMMODATION FEATURES:

- Tea/coffee making facilities
- Mini bar
- In-room movies (free)
- Ironing facilities
- Hair dryer

Room serviced daily



City Centre 500m

Map page 15 Ref. 14

From **\$169** PER ROOM PER NIGHT*

1 OCT – 29 DEC 10, 3 JAN – 31 MAR 11	ADULTS	1 NT	3 NTS	5 NTS
Standard	1 to 2	181	543	905
Superior	1 to 2	200	600	1000

1 APR – 30 SEP 11	ADULTS	1 NT	3 NTS	5 NTS
Standard	1 to 2	169	507	845
Superior	1 to 2	190	570	950

1 OCT – 27 DEC 11, 3 JAN – 31 MAR 12	ADULTS	1 NT	3 NTS	5 NTS
Standard	1 to 2	190	570	950
Superior	1 to 2	210	630	1050

Other prices apply 30 Dec 10 – 2 Jan 11, 28 Dec 11 – 2 Jan 12.

Children 0 to 15 years – up to 2 children stay free when sharing with adults and using existing bedding.

Max capacity 3.

MERHBA

TRAVELPOINT BONUS

FREE breakfast for 2 adults daily for stays of 3 nights or more, valid 1 Apr – 30 Sep 11.

FREE breakfast for up to 2 children when dining with paying adults in the hotel restaurant.

Quality Hotel Hobart Airport ★★★★★



Quality Hotel Hobart Airport is conveniently located at the Hobart International Airport and only 15 minutes to the CBD.

City Centre 17km
Map page 15 Ref. 1

1 Holyman Avenue, Cambridge

PROPERTY FEATURES:

- Restaurant ▪ Bar
- Room service (limited)
- Courtesy shuttle to the airport
- Internet access (wireless) ▪ Parking
- Guest laundry ▪ Non smoking

ACCOMMODATION FEATURES:

- Air-conditioning ▪ Mini bar
- Limited cooking facilities with microwave (1 Bedrooms)
- Tea/coffee making facilities
- Internet access (wireless)
- Ironing facilities ▪ Hair dryer

Room serviced daily



From **\$150** PER ROOM PER NIGHT*

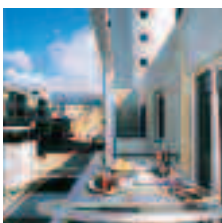
1 OCT 10 – 31 MAR 11, 1 OCT 11 – 31 MAR 12	ADULTS	1 NT	3 NTS	5 NTS
Studio	1 to 2	160	480	800
1 Bedroom	1 to 2	190	570	950
1 APR – 30 SEP 11	ADULTS	1 NT	3 NTS	5 NTS
Studio	1 to 2	150	450	750
1 Bedroom	1 to 2	180	540	900

Children 0 to 2 years – cot/bed charge payable direct.
3 to 14 years – adult prices apply.

Max capacity Studio – 2, 1 Bedroom – 4.

QHOBBA

Somerset on Salamanca ★★★★★



Contemporary apartments located on historic Salamanca Place, central to the markets, city centre and wildlife parks.

City Centre 100m
Map page 15 Ref. 19

8 Salamanca Place, Hobart

PROPERTY FEATURES:

- Laundry/dry cleaning service
- Charge back facility at selected local restaurants ▪ Parking (limited)

ACCOMMODATION FEATURES:

- Air-conditioning/heating
- Balcony or courtyard
- Kitchen (2 Bedrooms)
- Limited cooking facilities (Studio Executive)
- Cable TV ▪ CD/DVD player
- Internet access (broadband)
- Washer/dryer ▪ Ironing facilities

Room serviced daily (except Sunday)



From **\$179** PER ROOM PER NIGHT*

1 OCT – 25 DEC 10, 15 FEB – 31 MAR 11	ADULTS	1 NT	3 NTS	5 NTS
Studio Executive	1 to 2	207	621	1035
2 Bedroom Deluxe	1 to 4	319	957	1595
1 – 30 APR, 1 OCT – 25 DEC 11, 4 JAN – 31 MAR 12	ADULTS	1 NT	3 NTS	5 NTS
Studio Executive	1 to 2	215	645	1075
2 Bedroom Deluxe	1 to 4	325	975	1625

1 MAY – 30 SEP 11^	ADULTS	1 NT	3 NTS	5 NTS
Studio Executive	1 to 2	179	358	716
2 Bedroom Deluxe	1 to 4	244	732	1220

Other prices apply 26 Dec 10 – 14 Feb 11, 26 Dec 11 – 3 Jan 12.

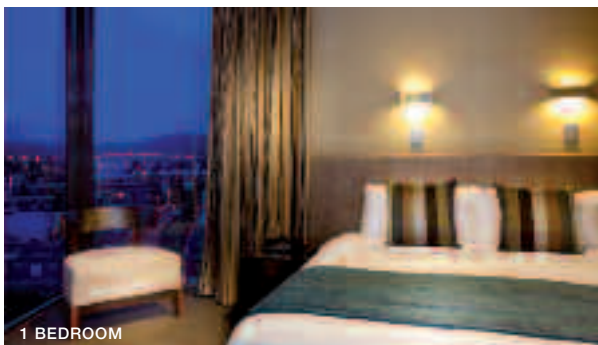
Children 0 to 12 years – free when sharing with an adult and using existing bedding. Cot free of charge.

Max capacity Studio Executive – 2, 2 Brm Deluxe – 5. **SOSHBA**

TRAVELPOINT BONUS

^ FREE Night Offer: Stay 3 nights, pay for 2.
(3 and 5 night prices include 1 free night)

Hotel Collins ◆◆◆◆◆



1 BEDROOM

58 Collins Street, Hobart

Hotel Collins is located between the CBD and the historic waterfront of Hobart and offers a choice of apartment style or modern hotel accommodation.

The hotel offers views to Mount Wellington, over Hobart city and the Queen's Domain. Hotel Collins is the perfect choice for your Tasmanian experience.

PROPERTY FEATURES:

- 24 hour reception
- Restaurant
- Café
- Bar
- Room service (24 hour)
- Business services
- Internet lounge
- Guest laundry
- Dry cleaning service
- Parking

ACCOMMODATION FEATURES:

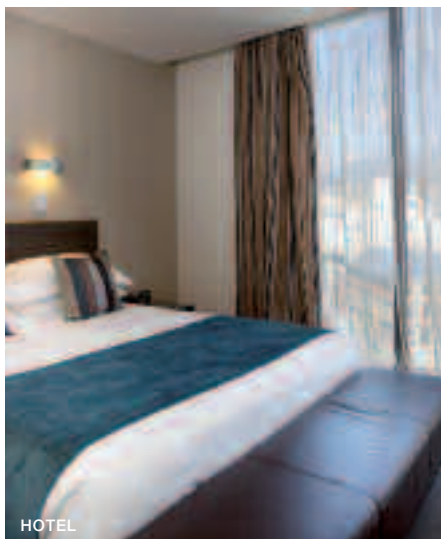
- Air-conditioning
- Mini bar
- Tea/coffee making facilities
- In-room movies (free)
- iPod docking station
- Internet access (broadband – free)
- Ironing facilities
- Hair dryer
- All rooms non smoking

Room serviced daily

City Centre 100m
Map page 15 Ref. 7



From **\$180** PER ROOM PER NIGHT*



1 OCT 10 – 31 MAR 11	ADULTS	1 NT	3 NTS	5 NTS
Hotel	1 to 2	180	540	900
Club	1 to 2	200	600	1000
1 Bedroom	1 to 2	280	840	1400
2 Bedroom	1 to 4	350	1050	1750
1 APR 11 – 31 MAR 12	ADULTS	1 NT	3 NTS	5 NTS
Hotel	1 to 2	220	660	1100
Hotel King/Club	1 to 2	240	720	1200
1 Bedroom	1 to 2	335	1005	1675
2 Bedroom	1 to 4	485	1455	2425

Other room types also available.

Children 0 to 2 years – cot free of charge.
3 to 14 years – adult prices apply.

Max capacity Hotel/Hotel King/Club – 2, 1 Bedroom – 3,
2 Bedroom – 5.

COLHBA

Hotel Grand Chancellor Hobart ★★★★★



1 Davey Street, Hobart

The Hotel Grand Chancellor overlooks one of the world's most iconic harbours. All 243 contemporary accommodation rooms offer magnificent views of either Mt Wellington and the city or Hobart's picturesque River Derwent and Constitution Dock.

Restaurant Tasman, open for buffet breakfast and a la carte dinner focuses on locally sourced Tasmanian produce. The menu showcases a range of regionally grown, artisan produce and the beverage list features a superior selection of local beers and spirits along with Tasmanian wines. Alternatively, The Atrium bar offers a relaxing environment with refreshments and light meals.

Personal, friendly service and welcoming hospitality makes the Hotel Grand Chancellor Hobart a special place to stay.

PROPERTY FEATURES:

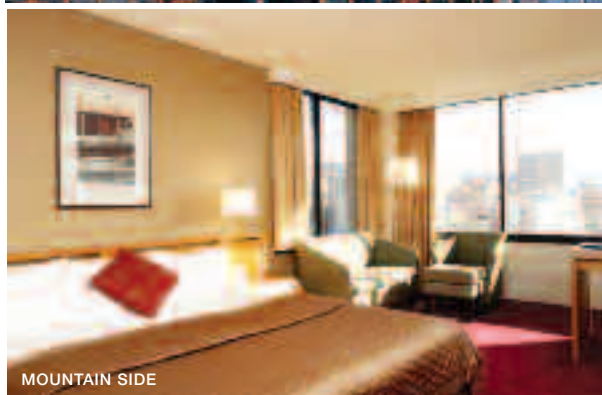
- 24 hour reception
- Restaurant
- Bar
- Room service (24 hour)
- Pool (heated indoor)
- Sauna
- Gymnasium
- Parking (extra charge)

ACCOMMODATION FEATURES:

- Air-conditioning
- Tea/coffee making facilities
- Mini bar
- In-room movies (pay to view)
- Internet access (broadband)
- Ironing facilities
- Hair dryer

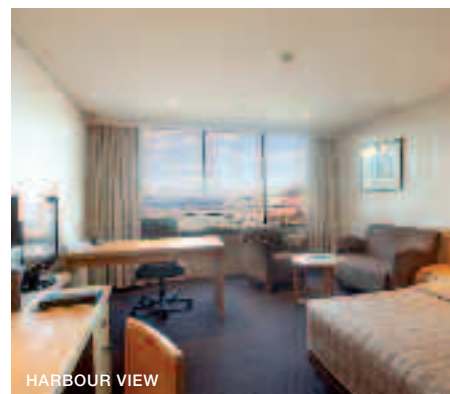
Room serviced daily

City Centre 150m
Map page 15 Ref. 3



MOUNTAIN SIDE

From **\$193** PER ROOM PER NIGHT*



HARBOUR VIEW

1 OCT – 25 DEC 10, 3 JAN – 31 MAR 11	ADULTS	1 NT	3 NTS	5 NTS
Mountain Side	1 to 2	227	681	1135
Harbour View	1 to 2	273	819	1365
Executive Suite	1 to 2	413	1239	2065
1 APR – 31 MAY, 1 SEP – 30 NOV 11, 1 – 31 MAR 12	ADULTS	1 NT	3 NTS	5 NTS
Mountain Side	1 to 2	207	621	1035
Harbour View	1 to 2	253	759	1265
Executive Suite	1 to 2	393	1179	1965
1 JUN – 31 AUG 11	ADULTS	1 NT	3 NTS	5 NTS
Mountain Side	1 to 2	193	579	965
Harbour View	1 to 2	240	720	1200
Executive Suite	1 to 2	380	1140	1900
1 – 25 DEC 11, 3 JAN – 29 FEB 12	ADULTS	1 NT	3 NTS	5 NTS
Mountain Side	1 to 2	233	699	1165
Harbour View	1 to 2	280	840	1400
Executive Suite	1 to 2	420	1260	2100

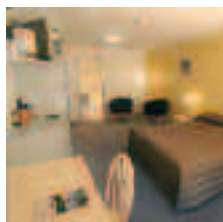
Other prices apply 26 Dec 10 – 2 Jan 11, 26 Dec 11 – 2 Jan 12.

Children 0 to 12 years – free when sharing with 2 adults and using existing bedding.

Max capacity Mountain Side/Harbour View – 3 adults or 2 adults/2 children, Executive Suite – 3.

HGCHBA

The Old Woolstore Apartment Hotel ★★★★★



1 Macquarie Street, Hobart

PROPERTY FEATURES:

- 24 hour reception
- Restaurant
- Bar
- Room service (24 hour)
- Gymnasium
- Dry cleaning service

ACCOMMODATION FEATURES:

- Air-conditioning
- Cable TV
- Mini bar
- Kitchen with microwave and dishwasher (1 and 2 Bedrooms)
- Tea/coffee making facilities
- Internet access (wireless)
- Laundry (1 and 2 Bedrooms)
- Ironing facilities
- Hair dryer

Room serviced daily



Conveniently located in the Sullivan's Cove area of Hobart, a short stroll from the city centre, Salamanca Place and the Botanical Gardens.

City Centre 500m
Map page 15 Ref. 2

From **\$180** PER ROOM PER NIGHT*

1 OCT 10 – 31 MAR 11	ADULTS	1 NT	3 NTS	5 NTS
Hotel	1 to 2	205	615	1025
Studio	1 to 2	225	675	1125
1 Bedroom	1 to 2	245	735	1225
1 APR 11 – 31 MAR 12 [^]	ADULTS	1 NT	3 NTS	5 NTS
Hotel	1 to 2	239	717	1195
Studio	1 to 2	269	807	1345
1 Bedroom	1 to 2	289	867	1445

3 night minimum stay applies 28 Dec 10 – 3 Jan 11, 28 Dec 11 – 3 Jan 12. Executive Spa and 2 Bedroom prices also available.

Includes [^] Full breakfast daily.

Children 0 to 2 years – cot free of charge.
3 to 14 years – adult prices apply.

Max capacity Hotel – 4, Studio/1 Bedroom – 2.

OLDHBA

TRAVELPOINT BONUS

FREE Night Offer: Stay 4 nights, pay for 3, valid 1 May – 30 Sep 11.

Quality Inn Macquarie Manor ◆◆◆◆◆



172 Macquarie Street, Hobart

PROPERTY FEATURES:

- DVD library
- Internet access (wireless)
- Safety deposit box
- Parking
- Non smoking

ACCOMMODATION FEATURES:

- Air-conditioning
- Mini bar
- Tea/coffee making facilities
- In-room movies (free)
- Internet access (wireless)
- Ironing facilities
- Hair dryer

Room serviced daily



Quality Inn Macquarie Manor is a historic property located in the city centre, just minutes walk from Salamanca Markets and the waterfront.

City Centre 1.5km
Map page 15 Ref. 16

From **\$143** PER ROOM PER NIGHT*

1 APR – 31 OCT 11	ADULTS	1 NT	3 NTS	5 NTS
Standard	1 to 2	143	429	715
1 NOV 11 – 31 MAR 12	ADULTS	1 NT	3 NTS	5 NTS
Standard	1 to 2	167	501	835

Other prices apply 1 Oct 10 – 31 Mar 11.

Children 0 to 12 years – up to 2 children free when sharing with 2 adults and using existing bedding.

Max capacity 3.

QIMHBA

Salamanca Inn ★★★★★



Spacious suite style accommodation perfectly located adjoining the colourful waterfront precinct of Hobart.

City Centre 500m
Map page 15 Ref. 18

10 Gladstone Street, Hobart

PROPERTY FEATURES:

- 24 hour reception
- Room service (limited) ▪ Restaurant
- Bar ▪ Pool (heated) ▪ Spa
- Guest laundry ▪ Parking (undercover)

ACCOMMODATION FEATURES:

- Mini bar
- Kitchen with microwave and dishwasher
- In-room movies (free)
- Internet access (wireless)
- Safe ▪ Hair dryer
- Ironing facilities

Apartment serviced daily



From **\$189** PER ROOM PER NIGHT*

1 OCT – 25 DEC 10, 5 JAN – 31 MAR 11	ADULTS	1 NT	2 NTS	5 NTS
Queen Suite	1 to 2	240	396	990
Family Four Suite	1 to 4	290	520	1300
1 – 30 APR, 1 OCT – 26 DEC 11, 5 JAN – 31 MAR 12	ADULTS	1 NT	2 NTS	5 NTS
Queen Suite	1 to 2	209	418	1045
Family Four Suite	1 to 4	280	560	1400
1 MAY – 30 SEP 11	ADULTS	1 NT	2 NTS	5 NTS
Queen Suite	1 to 2	189	378	945
Family Four Suite	1 to 4	246	492	1230

Other prices apply 26 Dec 10 – 4 Jan 11, 27 Dec 11 – 4 Jan 12.

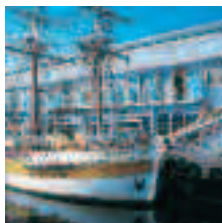
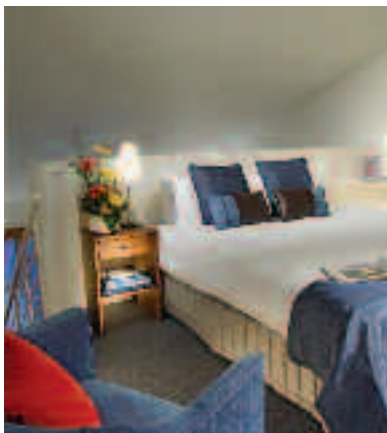
Children 0 to 2 years – cot/bed charge payable direct.
3 to 14 years – adult prices apply.

Max capacity Queen Suite – 2, Family Four Suite – 4. **SAAHBA**

TRAVELPOINT BONUS

FREE light breakfast for 2 adults daily for stays in a Queen Suite, valid 1 Jun – 30 Sep 11.

Somerset on the Pier ★★★★★



Located on Elizabeth Street Pier, directly on Hobart's waterfront and historic Sullivan's Cove, close to restaurants, bars and cafés.

City Centre 100m
Map page 15 Ref. 6

Elizabeth Street, Hobart

PROPERTY FEATURES:

- 24 hour reception
- Restaurants (4) ▪ Café
- Bar ▪ Room service (limited)
- DVD library (free)
- Parking (limited)

ACCOMMODATION FEATURES:

- Air-conditioning
- Kitchen
- Cable TV ▪ Washer/dryer
- CD/DVD player
- Ironing facilities
- Internet access (broadband)
- Hair dryer ▪ Safe

Apartment serviced daily (except Sunday)

From **\$120** PER ROOM PER NIGHT*

1 OCT – 25 DEC 10, 15 FEB – 31 MAR 11	ADULTS	1 NT	3 NTS	5 NTS
1 Bedroom Executive	1 to 2	240	720	1200
2 Bedroom Executive	1 to 4	320	960	1600
1 – 30 APR, 1 OCT – 25 DEC 11, 4 JAN – 31 MAR 12	ADULTS	1 NT	3 NTS	5 NTS
1 Bedroom Executive	1 to 2	245	735	1225
2 Bedroom Executive	1 to 4	311	933	1555
1 MAY – 30 SEP 11 [^]	ADULTS	1 NT	3 NTS	5 NTS
1 Bedroom Executive	1 to 2	193	386	772
2 Bedroom Executive	1 to 4	243	486	972

Other prices apply 26 Dec 10 – 14 Feb 11, 26 Dec 11 – 3 Jan 12.

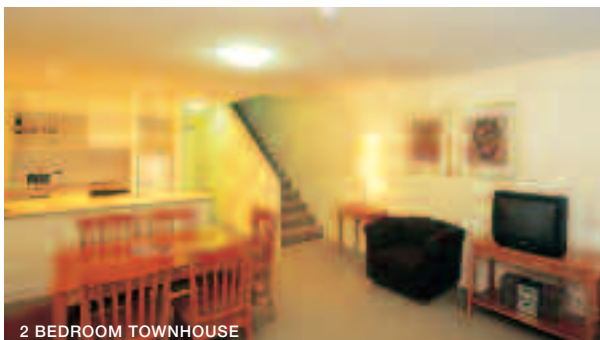
Children 0 to 12 years – free when sharing with an adult and using existing bedding. Cot free of charge.

Max capacity 1 Bedroom Executive – 3, 2 Bedroom Executive – 5. **SOMHBA**

TRAVELPOINT BONUS

[^] FREE Night Offer: Stay 3 nights, pay for 2.
(3 and 5 night prices include 1 free night)

Salamanca Terraces ◆◆◆◆◆



2 BEDROOM TOWNHOUSE

93 Salamanca Place, Hobart

Salamanca Terraces is superbly situated on the eastern end of Salamanca Place and close to restaurants and art galleries. Enjoy fully self-contained apartments plus use of the comprehensive facilities at Lennox Hobart, located opposite the hotel. The renowned Salamanca Market is being held every Saturday just metres from your apartment.

PROPERTY FEATURES:

- 24 hour reception
- Restaurant
- Café ▪ Bar
- Room service (24 hour)
- Internet facilities
- Guest laundry
- Dry cleaning service
- Lift ▪ Parking
- Non smoking

ACCOMMODATION FEATURES:

- Mini bar
- Cable TV
- Ironing facilities
- Limited cooking facilities with microwave (Hotel Studios)
- Kitchen with microwave (1 and 2 Bedrooms)
- Internet access (broadband)
- Washer/dryer (1 and 2 Bedrooms)
- Hair dryer

Room serviced daily

City Centre 1.5km
Map page 15 Ref. 20



From **\$235** PER ROOM PER NIGHT*



1 BEDROOM

1 OCT 10 – 30 SEP 11	ADULTS	1 NT	3 NTS	5 NTS
Hotel Studio	1 to 2	235	705	1175
1 Bedroom	1 to 2	265	795	1325
2 Bedroom Townhouse	1 to 4	345	1035	1725
1 OCT 11 – 31 MAR 12	ADULTS	1 NT	3 NTS	5 NTS
Hotel Studio	1 to 2	235	705	1175
1 Bedroom	1 to 2	270	810	1350
2 Bedroom Townhouse	1 to 4	350	1050	1750

3 night minimum stay applies for stays including 31 Dec 10. 4 night minimum stay applies 28 Dec 11 – 3 Jan 12. 1 Bedroom Penthouse prices also available.

Children 0 to 2 years – cot free of charge.
3 to 14 years – adult prices apply.

Max capacity Hotel Studio – 2, 1 Bedroom – 2 adults/1 child,
2 Bedroom Townhouse – 5.

SALHBA

TRAVELPOINT BONUS

\$50 food and beverage credit per room for stays of 2 nights, or \$100 food and beverage credit per room for stays of 3 nights or more, valid 1 May – 30 Sep 11.

Wrest Point ★★★★★



410 Sandy Bay Road, Sandy Bay

Absolute waterfront location on the sparkling River Derwent, offering hotel style accommodation, fine dining and million dollar views from the window of every room. Wrest Point is the perfect choice for a memorable stay in Hobart.

With four restaurants and six bars you'll find a place for every taste and mood. Sip a local pinot and watch the yachts on the harbour.

PROPERTY FEATURES:

- 24 hour reception
- Restaurants (4)
- Bars (6) ▪ Casino
- Massage facilities
- Conference and Entertainment venue
- Room service (24 hour)
- Tennis court
- Gymnasium ▪ Pool (heated indoor)
- Spa ▪ Sauna
- Mini golf ▪ Lift
- Parking (undercover)

ACCOMMODATION FEATURES:

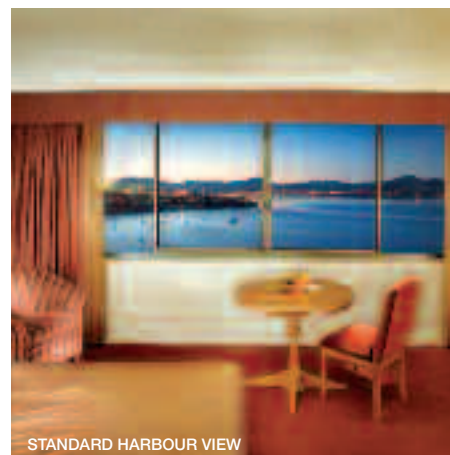
- Air-conditioning
- Tea/coffee making facilities
- In-room movies (free)
- Internet access (broadband)
- Ironing facilities
- Hair dryer

Room serviced daily

City Centre 3km
Map page 15 Ref. 24



From **\$129** PER ROOM PER NIGHT



STANDARD HARBOUR VIEW

21 DEC 10 – 9 APR, 12 – 30 APR 11	ADULTS	1 NT	3 NTS	5 NTS
Mountain Side	1 to 2	157	471	785
Water Edge	1 to 2	187	561	935
Standard Mountain View	1 to 2	216	648	1080
Standard Harbour View	1 to 2	231	693	1155
1 MAY – 20 DEC 11	ADULTS	1 NT	3 NTS	5 NTS
Mountain Side	1 to 2	129	387	645
Water Edge	1 to 2	153	459	765
Standard Mountain View	1 to 2	177	531	885
Standard Harbour View	1 to 2	189	567	945
21 – 28 DEC 11, 4 JAN – 31 MAR 12	ADULTS	1 NT	3 NTS	5 NTS
Mountain Side	1 to 2	151	453	755
Water Edge	1 to 2	178	534	890
Standard Mountain View	1 to 2	205	615	1025
Standard Harbour View	1 to 2	218	654	1090

Other prices apply 1 Oct – 20 Dec 10, 10 – 11 Apr 11, 29 Dec 11 – 3 Jan 12. Other room types also available.

Children 0 to 14 years – 1 child free when sharing with an adult and using existing bedding. Cot free of charge.

Max capacity Mountain Side/ Water Edge – 3, Standard Mountain View/Standard Harbour View – 4. **WREHBA**

Zero Davey Boutique Apartments ◆◆◆◆◆



15 Hunter Street, Hobart

Located in the historic port of Hobart, the apartments offer a fresh and contemporary experience to guests. From the futuristic foyer to the funky studios and apartments, Zero Davey is perfect for lovers of modern style, and the CBD and Salamanca Markets are right on the doorstep.

All apartments are equipped with plasma screen TVs, kitchen, wireless internet access, laundry and some with spas. The property also boasts a sauna, mini-gym, secure undercover car parking and lifts.

PROPERTY FEATURES:

- Exercise equipment
- Sauna
- Laundry/dry cleaning service
- Lift
- Parking (undercover security)

ACCOMMODATION FEATURES:

- Air-conditioning/heating
- Kitchen with microwave
- Internet access (wireless)
- Laundry
- Safe ▪ Hair dryer

Room serviced daily (except Sunday)

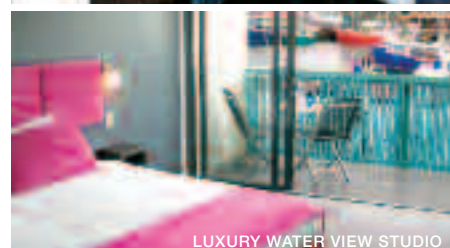
City Centre 50m
Map page 15 Ref. 4



From **\$203** PER ROOM PER NIGHT



LUXURY WATER VIEW STUDIO



LUXURY WATER VIEW STUDIO

1 OCT 10 – 31 MAR 11	ADULTS	1 NT	3 NTS	5 NTS
Deluxe Davey Studio	1 to 2	299	897	1495
Luxury Water View Studio	1 to 2	354	1062	1770
1 APR – 30 SEP 11	ADULTS	1 NT	3 NTS	5 NTS
Deluxe Davey Studio	1 to 2	203	609	1015
Luxury Water View Studio	1 to 2	285	855	1425
1 OCT 11 – 31 MAR 12	ADULTS	1 NT	3 NTS	5 NTS
Deluxe Davey Studio	1 to 2	271	813	1355
Luxury Water View Studio	1 to 2	340	1020	1700

2 and 3 Bedroom Apartment prices also available.

Children 0 to 2 years – cot/bed charge payable direct. 3 to 16 years – adult prices apply.

Max capacity 2. **ZERHBA**

TRAVELPOINT EXCLUSIVE

Free light breakfast for 2 adults daily, valid 1 May – 31 Jul 11.

Hobart and Port Arthur

The Henry Jones Art Hotel ◆◆◆◆◆



DELUXE SPA

A row of historic 1820s warehouses and former jam factory transformed into an enthralling experience on the edge of Hobart's waterfront.

City Centre 500m
Map page 15 Ref. 5

25 Hunter Street, Hobart

PROPERTY FEATURES:

- The IXL Atrium ▪ 24 hour reception ▪ Bar
- Restaurant ▪ Room service ▪ Café
- Henry Jones Design Studio
- Massage and beauty facilities
- Guest laundry ▪ Parking (undercover)

ACCOMMODATION FEATURES:

- Air-conditioning ▪ Mini bar
- Tea/coffee making facilities ▪ Cable TV
- Spa (except Standard rooms)
- CD/DVD player ▪ Ironing facilities
- Internet access (broadband) ▪ Hair dryer

Room serviced daily



From **\$271** PER ROOM PER NIGHT*

1 OCT 10 – 31 MAR 11	ADULTS	1 NT	3 NTS	5 NTS
Standard Atrium View	1 to 2	300	900	1500
Standard Harbour View	1 to 2	366	1098	1830
1 APR – 30 SEP 11	ADULTS	1 NT	3 NTS	5 NTS
Standard Atrium View	1 to 2	271	813	1355
Standard Harbour View	1 to 2	271	813	1355
1 OCT – 24 DEC 11, 5 JAN – 31 MAR 12	ADULTS	1 NT	3 NTS	5 NTS
Standard Atrium View	1 to 2	277	831	1385
Standard Harbour View	1 to 2	345	1035	1725

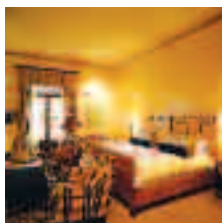
Other prices apply 25 Dec 11 – 4 Jan 12. Other room types also available.

Children 0 to 1 years – not catered for.
2 to 14 years – adult prices apply.

Max capacity 3.

HENHBA

The Islington Hotel ★★★★★



Built in 1847 and lovingly restored to its original glory, offering views of Mt Wellington and surrounded by landscaped gardens.

City Centre 2km
Map page 15 Ref. 26

321 Davey Street, Hobart

PROPERTY FEATURES:

- Bar ▪ Guest lounge ▪ Guest laundry
- Wine cellar ▪ Business services ▪ Library
- Glass conservatory ▪ Massage facilities
- Safety deposit box ▪ Non smoking
- Laundry/dry cleaning service
- Internet access (wireless) ▪ Parking

ACCOMMODATION FEATURES:

- Air-conditioning ▪ Patio ▪ Cable TV
- Tea/coffee making facilities ▪ Mini bar
- CD/DVD player ▪ Ironing facilities
- Internet access (wireless – free)
- Bathrobes ▪ Hair dryer

Room serviced daily



From **\$300** PER ROOM PER NIGHT*

1 OCT 10 – 31 MAR 11	ADULTS	1 NT	3 NTS	5 NTS
Garden/ Regency	1 to 2	500	1500	2500
1 APR – 30 SEP 11	ADULTS	1 NT	2 NTS	5 NTS
Attic	1 to 2	300	600	1500
Garden^	1 to 2	350	700	1750
Regency^	1 to 2	450	900	2250
1 OCT 11 – 31 MAR 12	ADULTS	1 NT	3 NTS	5 NTS
Attic	1 to 2	350	1050	1750
Garden	1 to 2	400	1200	2000
Regency	1 to 2	500	1500	2500

Signature room prices also available.

Includes Full breakfast daily and use of non-alcoholic mini bar.

Children 0 to 15 years – not catered for.

Max capacity 2.

ISHHBA

TRAVELPOINT BONUS

^ FREE Night Offer: Stay 3 nights, pay for 2, valid for Monday to Friday night stays.

Fox and Hounds Inn, Port Arthur ★★☆☆



Situated on a beautiful waterfront in bush surrounds, just one minute from the historic site of Port Arthur.

Town Centre 1km
Map page 7 Ref. 1

6789 Arthur Highway, Port Arthur

PROPERTY FEATURES:

- Restaurant ▪ Bar
- Room service (limited)
- Bottle shop ▪ Tennis court
- Children's playground
- Safety deposit box
- Guest laundry
- Parking
- Non smoking

ACCOMMODATION FEATURES:

- Heating ▪ Electric blankets
- Tea/coffee making facilities
- Mini bar ▪ Ironing facilities
- Hair dryer

Room serviced daily

From **\$175** PER ROOM PER NIGHT*

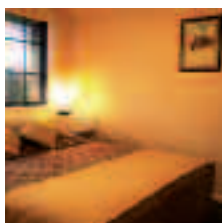
1 OCT 10 – 30 SEP 11	ADULTS	1 NT	3 NTS	5 NTS
Motel	1 to 2	175	525	875
1 Bedroom	1 to 2	195	585	975
2 Bedroom	1 to 4	235	705	1175
1 OCT 11 – 31 MAR 12	ADULTS	1 NT	3 NTS	5 NTS
Motel	1 to 2	180	540	900
1 Bedroom	1 to 2	200	600	1000
2 Bedroom	1 to 4	240	720	1200

Children 0 to 2 years – cot free of charge.
3 to 14 years – adult prices apply.

Max capacity Motel/1 Bedroom – 3, 2 Bedroom – 4.

FOXPAR

Port Arthur Villas ★★★★★



Spacious self-contained accommodation located adjacent to Port Arthur Historic Site and close to surrounding beaches.

Town Centre 1km
Map page 7 Ref. 1

52 Safety Cove Road, Port Arthur

PROPERTY FEATURES:

- Barbecue area
- DVD library ▪ Guest lounge ▪ Parking
- Children's playground ▪ Guest laundry
- Internet facilities ▪ Non smoking

ACCOMMODATION FEATURES:

- Air-conditioning ▪ Balcony
- Mini bar ▪ Kitchen with microwave
- Tea/coffee making facilities
- Cable TV ▪ DVD player
- Ironing facilities ▪ Hair dryer
- All rooms non smoking

Apartment serviced weekly



From **\$130** PER ROOM PER NIGHT*

1 OCT 10 – 30 APR 11	ADULTS	1 NT	2 NTS	5 NTS
Studio	1 to 2	160	290	725
1 Bedroom	1 to 2	170	340	850
2 Bedroom	1 to 2	190	380	950
1 MAY – 31 AUG 11	ADULTS	1 NT	2 NTS	5 NTS
Studio	1 to 2	145	260	650
1 Bedroom	1 to 2	155	310	775
2 Bedroom	1 to 2	170	340	850
1 SEP 11 – 31 MAR 12	ADULTS	1 NT	2 NTS	5 NTS
Studio	1 to 2	170	310	775
1 Bedroom	1 to 2	180	360	900
2 Bedroom	1 to 2	200	400	1000

Children 0 to 1 years – cot/bed charge payable direct.
2 to 14 years – \$15 per child per night.

Max capacity Studio – 3, 1 Bedroom – 2, 2 Bedroom – 5.

PAVPAR

Stewarts Bay Lodge, Port Arthur ★★★★★



A unique waterfront escape located next to Port Arthur Historic Site in one of Tasmania's most beautiful natural settings.

Town Centre 100m
Map page 7 Ref. 1

6955 Arthur Highway, Port Arthur

PROPERTY FEATURES:

- Tennis ▪ Spa
- Barbecue area ▪ Guest laundry
- Parking

ACCOMMODATION FEATURES:

- Balcony ▪ Heating
- Kitchen with microwave
- CD/DVD player
- Washer/dryer
- Hair dryer

Cabin not serviced during stay (linen change mid stay for stays of 3 nights or more)



From **\$180** PER ROOM PER NIGHT*

1 OCT – 23 DEC 10, 27 JAN – 31 MAR 11	ADULTS	1 NT	3 NTS	5 NTS
1 Bedroom Cabin	1 to 2	180	540	900
2 Bedroom Cabin	1 to 4	237	711	1185
3 Bedroom Cabin	1 to 6	376	1128	1880

1 APR – 23 DEC 11	ADULTS	1 NT	3 NTS	5 NTS
1 Bedroom Cabin	1 to 2	185	555	925
2 Bedroom Cabin	1 to 4	210	630	1050
3 Bedroom Cabin	1 to 6	375	1125	1875

24 DEC 11 – 31 MAR 12	ADULTS	1 NT	3 NTS	5 NTS
1 Bedroom Cabin	1 to 2	220	660	1100
2 Bedroom Cabin	1 to 4	315	945	1575
3 Bedroom Cabin	1 to 6	440	1320	2200

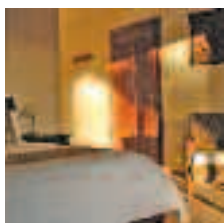
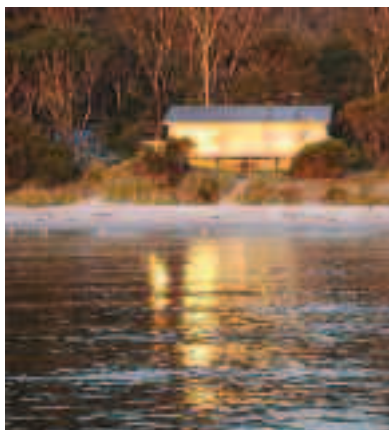
2 night minimum stay applies 22 – 25 Apr 11, 30 Dec 11 – 1 Jan 12. Other prices apply 24 Dec 10 – 26 Jan 11. Other room types also available.

Children 0 to 2 years – cot free of charge.
3 to 14 years – adult prices apply.

Max capacity 1 Brm Cabin – 2, 2 Brm Cabin – 5,
3 Brm Cabin – 7.

STEPAR

Harpers on the Beach, White Beach ◆◆◆◆



Offering beachfront accommodation, just 10 minutes from the Port Arthur Historic Site, with spectacular views of the ocean.

Town Centre 4km
Map page 7 Ref. 2

8 Harpers Place, White Beach

PROPERTY FEATURES:

- Guest lounge
- DVD library
- Internet access (wireless)
- Parking

ACCOMMODATION FEATURES:

- Balcony ▪ Bathrobes
- Kitchen with microwave (Beach Cottages)
- Tea /coffee making facilities
- Mini bar (Beachfront and Standard)
- Hair dryer
- All rooms non smoking

Room serviced daily
Beach Cottage not serviced

From **\$132** PER ROOM PER NIGHT*

1 OCT 10 – 20 DEC 11, 1 FEB – 31 MAR 12	ADULTS	1 NT	2 NTS	5 NTS
Standard	1 to 2	180	340	660
Beach Cottage	2	180	340	660
Beachfront	2	200	380	740

21 DEC 11 – 31 JAN 12	ADULTS	1 NT	2 NTS	5 NTS
Standard	1 to 2	200	380	740
Beach Cottage	2	220	420	820
Beachfront	2	240	460	900

Other prices apply 21 Dec 10 – 31 Jan 11.

Includes Standard and Beachfront rooms include full breakfast daily.

Children 0 to 12 years – not catered for.

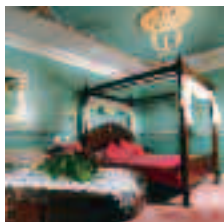
Max capacity Beach Cottage – 4, Standard/Beachfront – 2.

HARPAR

TRAVELPOINT BONUS

FREE Night Offer: Stay 5 nights, pay for 4.
(5 night price includes 1 free night)

Hatchers Richmond Manor, Richmond ◆◆◆◆◆



Family accommodation set on a 100 acre working farm and orchard on the beautiful Coal River, only 20 minutes from Hobart.

Town Centre 1km
Map page 7 Ref. 3

73 Prossers Road, Richmond

PROPERTY FEATURES:

- Restaurant ▪ Bar ▪ DVD library
- Internet access (wireless)
- Guest laundry ▪ Parking

ACCOMMODATION FEATURES:

- Kitchen with microwave and dishwasher (Cottage)
- Limited cooking facilities
- Tea /coffee making facilities
- Spa bath ▪ CD/DVD player
- Ironing facilities ▪ Hair dryer
- All rooms non smoking

Room serviced daily



From **\$150** PER ROOM PER NIGHT*

21 DEC 10 – 31 MAR 11	ADULTS	1 NT	3 NTS	5 NTS
Killymoon Suite	1 to 2	212	636	1060
Cottage/Executive Suite	1 to 2	267	801	1335

1 APR – 30 SEP 11	ADULTS	1 NT	3 NTS	5 NTS
Killymoon Suite	1 to 2	150	450	750
Executive Suite	1 to 2	160	480	800
Cottage	1 to 2	187	561	935

23 DEC 11 – 31 MAR 12	ADULTS	1 NT	3 NTS	5 NTS
Killymoon Suite	1 to 2	190	570	950
Executive Suite	1 to 2	235	705	1175
Cottage	1 to 2	230	690	1150

Other prices apply 1 Oct – 20 Dec 10, 1 Oct – 22 Dec 11. Woodburne 3 Bedroom Apartment prices also available.

Includes Full breakfast daily.

Children 0 to 2 years – cot/bed charge payable direct.
3 to 14 years – adult prices apply.

Max capacity Killymoon Suite/Executive Suite – 2, Cottage – 4.

HATTAS

Base Camp Tasmania, Glenfern ◆◆◆◆◆



Located south-west of New Norfolk, these architect designed cabins and bunkhouses are set in a secluded bush valley on a private nature reserve.

Town Centre 13km
Map page 7 Ref. 4

959 Glenfern Road, Glenfern

PROPERTY FEATURES:

- Barbecue area
- Internet facilities
- Guest laundry ▪ Parking

ACCOMMODATION FEATURES:

- Balcony
- Limited cooking facilities with microwave
- Tea/coffee making facilities
- CD player
- Laundry ▪ Hair dryer
- All rooms non smoking

Room serviced weekly



From **\$120** PER ROOM PER NIGHT*

1 OCT 10 – 31 MAR 12	ADULTS	1 NT	3 NTS	5 NTS
Family Cabin	1 to 2	120	360	600

Bunkhouse prices also available.

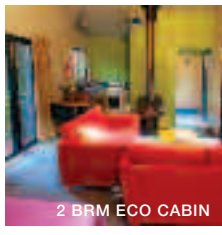
Children 0 to 2 years – cot/bed charge payable direct.
3 to 10 years – \$25 per child per night.

Max capacity 6.

BCTTAS

Beyond Hobart

Huon Bush Retreats, Ranelagh ◆◆◆◆



2 BRM ECO CABIN

Located in a private habitat reserve, Huon Bush Retreats is central to all the attractions of the Huon Valley.

Shop 3km
Map page 7 Ref. 5

300 Browns Road, Ranelagh

PROPERTY FEATURES:

- Room service (limited)
- Spa
- Barbecue area
- Parking

ACCOMMODATION FEATURES:

- Balcony (2 Bedroom Eco Cabins)
- Mini bar
- Kitchen
- Tea/coffee making facilities
- CD player

Room serviced daily



From **\$275** PER ROOM PER NIGHT*

1 OCT 10 – 21 APR, 27 APR – 30 SEP 11	ADULTS	1 NT	3 NTS	5 NTS
Studio Eco Cabin	1 to 2	275	825	1375
2 Bedroom Eco Cabin	1 to 4	375	1125	1875

22 – 26 APR, 1 OCT 11 – 31 MAR 12	ADULTS	1 NT	3 NTS	5 NTS
Studio Eco Cabin	1 to 2	295	885	1475
2 Bedroom Eco Cabin	1 to 4	395	1185	1975

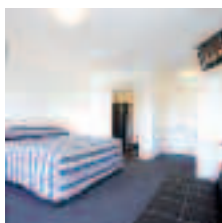
2 night minimum stay applies 20 Dec 10 – 16 Jan, 22 – 26 Apr, 22 Dec 11 – 16 Jan 12.

Children 0 to 2 years – cot free of charge.
3 to 14 years – adult prices apply.

Max capacity Studio Eco Cabin – 3, 2 Bedroom Eco Cabin – 5.

HBRTAS

Southern Lights Hotel, Kingston ◆◆◆◆



Overlooking the city of Kingston, each of the refurbished rooms feature contemporary design and enjoy stunning river views.

Town Centre 10km
Map page 7 Ref. 6

19 Kingston View Drive, Kingston

PROPERTY FEATURES:

- Restaurant
- Room service (limited)
- Guest laundry
- Dry cleaning service
- Parking

ACCOMMODATION FEATURES:

- Air-conditioning
- Mini bar
- Tea/coffee making facilities
- Internet access (broadband)
- Ironing facilities
- Hair dryer
- All rooms non smoking

Room serviced daily

From **\$130** PER ROOM PER NIGHT*

1 OCT 10 – 30 APR 11	ADULTS	1 NT	3 NTS	5 NTS
Hotel	1 to 2	145	435	725
Deluxe	1 to 2	165	495	825
Hotel Family	4	195	585	975

1 MAY – 30 SEP 11	ADULTS	1 NT	3 NTS	5 NTS
Hotel	1 to 2	130	390	650
Deluxe	1 to 2	150	450	750
Hotel Family	4	180	540	900

1 OCT – 28 DEC 11, 3 JAN – 31 MAR 12	ADULTS	1 NT	3 NTS	5 NTS
Hotel	1 to 2	150	450	750
Deluxe	1 to 2	175	525	875
Hotel Family	4	210	630	1050

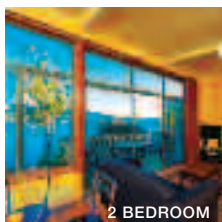
Other prices apply 29 Dec 11 – 2 Jan 12.

Children 0 to 2 years – cot/bed charge payable direct.
3 to 14 years – adult prices apply.

Max capacity Hotel/Deluxe – 3, Hotel Family – 4.

SOUHBA

Driftwood Cottages, Dover ◆◆◆◆



2 BEDROOM

Driftwood Cottages offers quality self-contained cottages and studio rooms with spectacular views over Port Esperance Bay and the mountains.

Town Centre 500m
Map page 7 Ref. 8

51 Bay View Road, Dover

PROPERTY FEATURES:

- Barbecue area
- DVD library
- Guest laundry
- Parking

ACCOMMODATION FEATURES:

- Air-conditioning (2 Brms)
- Balcony
- Tea/coffee making facilities
- Limited cooking facilities (Studios)
- Kitchen with microwave and dishwasher (2 Bedrooms)
- CD/DVD player
- Ironing facilities
- Hair dryer
- All rooms non smoking

Room serviced daily



From **\$185** PER ROOM PER NIGHT*

1 OCT 10 – 31 MAR 11, 1 OCT 11 – 31 MAR 12	ADULTS	2 NTS	3 NTS	5 NTS
Studio Cottage	1 to 2	420	630	1050
2 Bedroom Cottage	1 to 4	560	840	1400

1 APR – 30 SEP 11	ADULTS	2 NTS	3 NTS	5 NTS
Studio Cottage	1 to 2	370	555	925
2 Bedroom Cottage	1 to 4	530	795	1325

Children 0 to 2 years – cot free of charge.
3 to 14 years – adult prices apply.

Max capacity Studio Cottage – 2, 2 Bedroom Cottage – 4.

DRCTAS

The Peninsula Experience, Dover ◆◆◆◆



Stay on your own private peninsula by the fishing village of Dover, set on 250 acres with pristine wilderness, water and wildlife to explore.

Town Centre 4km
Map page 7 Ref. 8

Blubber Head Road, Dover

PROPERTY FEATURES:

- Jacuzzi
- Barbecue area
- Fireplace
- DVD library
- Internet access (wireless)
- Guest laundry
- Parking

ACCOMMODATION FEATURES:

- Ocean views
- Kitchen with microwave
- Mini-bar
- Internet access (wireless)
- CD/DVD player
- Laundry
- All rooms non smoking

Apartment serviced weekly

From **\$740** PER ROOM PER NIGHT*

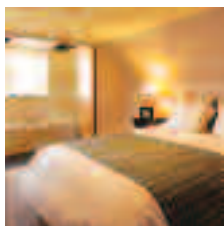
1 OCT 10 – 31 MAR 12	ADULTS	2 NTS	5 NTS	7 NTS
3 King Bedroom House	1 to 6	1480	3700	5180

Children 0 to 16 years – not catered for.

Max capacity 6.

PEXTAS

The Priory Country Lodge, Bothwell ◆◆◆◆◆



Built in 1848, this country lodge is steeped in history and style with each room offering quality furnishings, antiques and bathrooms.

Town Centre 500m
Hobart 75km
Map page 7 Ref. 9

2 Wentworth Street, Bothwell

PROPERTY FEATURES:

- On-site chef ▪ Bar
- Barbecue area
- Massage facilities
- Sauna ▪ Guest lounge
- Library ▪ DVD library
- Internet access (wireless)
- Non smoking

ACCOMMODATION FEATURES:

- Air-conditioning
- Tea/coffee making facilities
- Bathrobes ▪ Hair dryer

Room serviced daily

From **\$400** PER ROOM PER NIGHT*

1 OCT 10 – 31 MAR 12	ADULTS	1 NT	3 NTS	5 NTS
Superior	1 to 2	400	1200	2000
Suite	1 to 2	500	1500	2500
Deluxe Suite	1 to 2	600	1800	3000

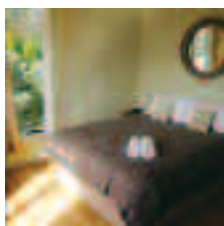
Includes Silver service afternoon tea on arrival.
Full breakfast and 2 course set menu dinner daily.

Children 0 to 11 years – free when sharing with an adult and using existing bedding, room only.

Max capacity 2.

PRITAS

Bruny Island Explorers Cottages ★★☆☆



Self catering cottage accommodation overlooking Daniels Bay. Spectacular views and wildlife at your doorstep.

Beach 500m
Shop 900m
Map page 7 Ref. 7

20 Lighthouse Road, Bruny Island

PROPERTY FEATURES:

- Barbecue area
- Guest laundry
- Non smoking

ACCOMMODATION FEATURES:

- Fireplace
- Kitchen with microwave
- Tea/coffee making facilities
- CD/DVD player
- Laundry

Apartment serviced midstay for stays of 5 nights or more.

From **\$175** PER ROOM PER NIGHT*

1 – 30 APR 11, 1 OCT – 24 DEC 11	ADULTS	1 NT	3 NTS	5 NTS
2 Brm Cottage/2 Brm Family Explorer Villa	1 to 2	185	555	925
1 MAY – 30 SEP 11	ADULTS	1 NT	3 NTS	5 NTS
2 Brm Cottage/2 Brm Family Explorer Villa	1 to 2	175	525	875
	1 to 2	215	645	1075
25 DEC 11 – 31 MAR 12	ADULTS	1 NT	3 NTS	5 NTS
2 Brm Cottage/2 Brm Family Explorer Villa	1 to 2	195	585	975
	1 to 2	235	705	1175

Other prices apply 1 Oct 10 – 31 Mar 11.

Children 0 to 2 years – cot/bed charge payable direct.
3 to 14 years – adult prices apply.

Max capacity 2 Bedroom Cottage/Explorer Villa – 4,
2 Bedroom Family – 5.

BRUBRU

Coach Transfers



Daily scheduled shuttle service to all Hobart CBD accommodation. Meets all flights and departs outside the terminal.

Tasmania's Own Redline also offer daily scheduled coach transfers to Launceston, Burnie, Devonport, Bicheno and St Helens.

Travel in comfort on board one of the modern, fully air-conditioned coaches. Enjoy friendly commentary provided by an experienced team of drivers whilst travelling to your chosen destination.

Price per person (one way)

PRICE:	ADULT	CHILD 5-16 YEARS
Airport to CBD	\$19	\$13
Hobart to Launceston	\$47	\$24
Hobart to Devonport	\$76	\$38
Hobart to Burnie	\$92	\$46
Hobart to Bicheno	\$73	\$36
Hobart to St Helens	\$66	\$33

Other prices apply 1 Oct 10 – 31 Mar 11.

TASMANIA'S OWN REDLINE

REDLST

Cadbury Coach Tour



The sweetest tour in Australia! Visit the Cadbury Chocolate Factory Visitor Centre and gain an insight into chocolate through the interactive displays. There are free samples to enjoy and time to purchase discount chocolate.

INCLUDES:

- Expert driver/guide and commentary
- Entry into Cadbury Chocolate Factory Visitor Centre
- Modern coach travel
- Pick-up from Hobart accommodation

Departs: Mon to Fri from Hobart at 9:15am

Returns: 11:30am

PRICE PER PERSON:

Adult	\$42
Child 5-15 years	\$21

EXPERIENCE TASMANIA

EXPHBA

Tasmanian Devils



Journey to Bonorong Wildlife Park, overlooking the Brighton Valley. Take a guided tour of Bonorong and learn of the habits of Australia's native animals. You can even get warm and friendly with a Tasmanian Devil.

Visit the historical town of Richmond on the way back to Hobart. Spend time exploring the convict built bridge, the gaol and the mellow stone cottages.

INCLUDES:

- Expert driver/guide and commentary
- Entry into Bonorong Wildlife Park
- Modern coach travel
- Return transfers from Hobart accommodation

Departs: From Hobart at 1:10pm
Mon to Sat (Nov – Apr)
Tue, Thu to Sat (May – Oct)

Returns: 5pm

PRICE PER PERSON: 1 OCT 10 – 31 MAR 11 1 APR 11 – 31 MAR 12

Adult	\$77	\$80
Child 5-15 years	\$39	\$40

EXPERIENCE TASMANIA

EXPHBA

Tours from Hobart and Surrounds

Mt Field and Tassie Devils



Mt Wellington, Russell Falls, the world's tallest hardwood trees, lush rainforests and the legendary Tassie Devil are just a few of the highlights you will experience in one fantastic day. Enjoy short walks through Mt Field National Park and amazing views from the summit of Mt Wellington.

INCLUDES:

- Guided walks and commentary
- Entrance fees and National Parks Pass
- Guided tour of Wildlife Sanctuary
- Return transfers from Hobart accommodation

Departs: From Hobart at 7:30am
Sun to Fri (Nov – Apr)
Tue, Thu, Sun (May – Oct)

Returns: 5pm

PRICE:

Adult	\$120
Student/Pensioner	\$110

Not suitable for children under 16 years.

TOURS TASMANIA

BBBHBA

Mt Wellington Descent



Transfer to the summit of Mt Wellington then follow your guide on a 21 kilometre bike ride down the mountain, stopping along the way to take in the varying views. The winding mountain road takes you down to the foothills where you can choose to experience the thrill of the off-road section. Regroup at Cascade Gardens then complete the ride through the back streets of Hobart and Battery Point at Salamanca Place on the waterfront of Hobart.

INCLUDES:

- Cycle guide and support vehicle
- Cycle safety briefing
- Mountain bike, helmet and safety vest
- Transfer to the summit

Departs: Daily from Brooke Street Pier, Hobart at 9am and 1pm (Sep – Jun)

Returns: 12 noon, 3:30pm



PRICE:

Adult	\$75
Child 8-16 years	\$65

Not suitable for children under 8 years.

UNDER DOWN UNDER

UDUHBA

Freycinet National Park



Journey from Hobart to Tasmania's stunning East Coast and discover the beautiful Freycinet National Park. Take a guided walk to Wineglass Bay lookout and continue on to Wineglass Bay. Alternatively, return from the lookout with a guide and explore Sleepy Bay, Honeymoon Bay and Cape Tourville Lighthouse.

INCLUDES:

- Experienced guide
- Guided walks
- National Park fees
- Return transfers from Hobart accommodation

Departs: From Hobart at 7:30am
Sun to Fri (Nov – Apr),
Mon, Wed, Fri (May – Oct)

Returns: 7pm

PRICE:

Adult	\$120
Student/Pensioner	\$110

Not suitable for children under 16 years.

TOURS TASMANIA

BBBHBA

The Hobart Paddle



Step off the street and pick up a paddle!

Experience this harbour city from a different perspective and become part of Hobart's vibrant waterfront. On this relaxed, two hour kayaking tour paddle along Hobart's shoreline to explore historic Battery Point, vibrant Salamanca and the bustling docks of the city's waterfront. Work up an appetite in time to enjoy some of Hobart's legendary fish and chips straight from a dockside fish punt.

INCLUDES:

- Experienced guide
- All sea kayaking equipment
- Fish and chips
- Dry bag for personal items

Departs: Daily from Marieville Esplanade Beach, Sandy Bay at 10:30am and twilight

Duration: 2 hours



PRICE:

	1 OCT 10 – 30 JUN 11	1 JUL 11 – 31 MAR 12
Adult	\$65	\$75
Child 4-12 years	\$65	\$75

FREYCINET ADVENTURES

FSATES

Peppermint Bay Cruise



Enjoy a relaxing day discovering the real Tasmania on board the 23 metre catamaran, Peppermint Bay II. This fully guided cruise takes in the harbour, the River Derwent, and the magnificent waters of the D'Entrecasteaux Channel on its way past Bruny Island to Peppermint Bay. View the colourful sea gardens and giant kelp forests through underwater cameras. Join the afternoon shore excursion to Peppermint Bay.

INCLUDES:

- 4 hour cruise
- 1 hour tour of Peppermint Bay
- Peppermint Bay regional lunch platter
- Captains Upper deck also includes morning tea, all non alcoholic beverages, wine with lunch, and dessert

Departs: From Brooke Street Pier, Hobart at 11:30am
Daily (Dec – Mar)
Wed, Fri to Sun (Apr – Nov)

Returns: 4:30pm

PRICE:

	ADULT	CHILD 4-14 YEARS	FAMILY 2 ADULTS/2 CHILDREN
Atrium Seat	\$88	\$48	\$224
Window Seat	\$108	\$58	\$274
Captains Upper Deck	\$168	N/A	N/A

HOBART CRUISES

HBAHBA

Bruny Island Eco Cruise



Experience Robert Pennicott's award winning three hour wilderness cruise which takes you along Bruny Island's rugged coast beneath some of Australia's highest sea cliffs. Enter deep sea caves and join in the search for wildlife such as seals, dolphins and seabirds. The custom built yellow boats are ideal for viewing the spectacular coastline and wildlife with covered open-aired seating providing an excellent all round view.

INCLUDES:

- 3 hour eco cruise
- Morning tea
- Lunch
- Return transfers from Hobart with guided commentary

Departs: Daily from Franklin Wharf, Hobart at 8am

Returns: 5:30pm



PRICE:

Adult	\$165
Child 3-16 years	\$110

BRUNY ISLAND CRUISES

BRUTAS

Bruny Wildlife Adventure



Your adventure begins and ends in Hobart aboard the 23 metre catamaran and includes a voyage to Bruny Island aboard the state-of-the-art coastal expedition vessel Adventure. Experience South Bruny's sculpted coastline and abundant wildlife including sea eagles, dolphins and tiny penguins, and travel into the mystical Southern Ocean.

INCLUDES:

- Return cruise from Hobart to Bruny Island aboard Peppermint Bay II
- Bruny Island tour aboard coastal expedition vessel Adventure
- Full length expedition jacket
- Morning tea
- Gourmet lunch at Peppermint Bay

Departs: From Brooke Street Pier, Hobart at 8:30am
Daily (Dec – Mar)
Mon, Wed, Fri to Sun (Apr, Nov)
Mon, Fri, Sun (May, Oct)

Returns: 4:30pm

PRICE:	1 OCT 10 – 31 MAR 11	1 APR 11 – 31 MAR 12
Adult	\$185	\$195
Child 4-14 years	\$125	\$125
Family 2 adults and 2 children	\$495	\$515

Minimum height of 130cm required.

HOBART CRUISES

BHAHBA

Tasman Island Eco Cruise



Robert Pennicott's Tasman Island Cruises travels the coastline between Eaglehawk Neck and Port Arthur, southern Tasmania. You will experience the highest sea cliffs in the southern hemisphere and search the coastline for wildlife such as seals, dolphins and seabirds. The custom built yellow boats are ideal for eco-cruising, allowing maximum vision and interaction with the coastal wilderness. The skippers are highly skilled and will ensure your experience is enjoyable and informative.

INCLUDES:

- 3 hour eco cruise to Tasman Island
- Morning tea
- Lunch
- Return transfers from Hobart with guided commentary

Departs: Daily from Franklin Wharf, Hobart at 7:45am

Returns: 6pm



PRICE:

Adult	\$165
Child 3-16 years	\$110

TASMAN ISLAND CRUISES

TICPAR

Huon Jet



Experience the thrill of white water jet boating on the Huon River around 40 minutes south of Hobart. Your skipper negotiates rapids and shingle beds in water only centimetres deep, and executes a number of 360 degree spins, all in complete safety. The dark tannin stained waters give off magnificent reflections and small Huon Pines can be seen along the river banks.

INCLUDES:

- 35 minute jet boat ride
- Use of life jacket and poncho

Departs: Daily from Huon Visitor Centre Jetty, Huonville
Regular departures between 9:15am – 5pm

Duration: 35 minutes

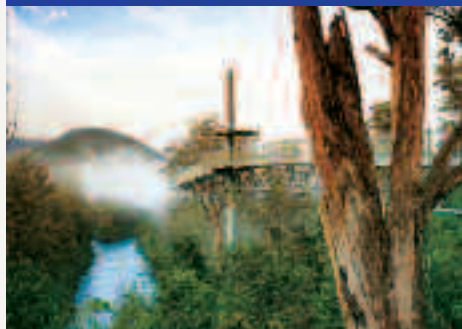
PRICE:

	1 OCT 10 – 31 AUG 11	1 SEP 11 – 31 MAR 12
Adult	\$69	\$72
Child 4-16 years	\$47	\$49

HUON RIVER JET BOATS

HUOHBA

Huon Valley & Tahune AirWalk



Experience the beauty of South West Tasmania's temperate rainforests, unique timbers and wild rivers. Walk under tall tree fern canopies alongside the tannin coloured Huon River. Travel south by coach through the lush rolling hills of the Huon Valley and head deep into the Aussie bush to walk the tree tops of pristine forest at Tahune Forest AirWalk.

INCLUDES:

- Expert driver/guide and commentary
- Tahune Airwalk admission
- Light lunch
- Modern coach travel
- Return transfers from Hobart accommodation

Departs: From Hobart
Mon to Fri at 8:15am (Oct – Apr)
Mon, Wed, Fri at 9:15am (May – Sep)

Returns: 4:30pm

PRICE:	1 OCT 10 – 31 MAR 11	1 APR 11 – 31 MAR 12
Adult	\$146	\$150
Child 5-15 years	\$73	\$75

EXPERIENCE TASMANIA

EXPBHA

Grand Port Arthur



Your tour starts in Hobart travelling across the Tasman Bridge, through Eaglehawk Neck, onto the Tasman Peninsula. Wonder at the spectacle of Tasman Arch and the magnitude of Devils Kitchen and enjoy superb views of the rugged coastline.

Take a guided walking tour of Port Arthur with access to over 30 ruins and restored buildings.

INCLUDES:

- Port Arthur Historic Site entry
- Harbour cruise
- Isle of Dead guided tour
- Lunch
- Audio Headsets
- Expert driver/guide and commentary
- Return transfers from Hobart accommodation

Departs: Sun to Fri from Hobart at 8:15am (Oct – Apr),
9:15am (May – Sep)

Returns: 5pm

PRICE:	1 OCT 10 – 31 MAR 11	1 APR 11 – 31 MAR 12
Adult	\$150	\$155
Child 5-15 years	\$75	\$78

EXPERIENCE TASMANIA

EXPBHA

Hobart to Port Arthur



Depart Hobart in the comfort of a modern catamaran and experience the beauty of Cape Raoul and Tasmania's unique coastal scenery as you travel to Port Arthur.

Immerse yourself in the fascinating history of Port Arthur Historic Site and spend time exploring the many historic buildings and ruins.

INCLUDES:

- Two and half hour coastal cruise
- Port Arthur Historic Site entry
- Guided walking tour
- Isle of Dead tour
- Harbour cruise
- Morning tea
- Lunch

Departs: Wed, Fri, Sun from Brooke Street Pier, Hobart
at 8am (Oct – Apr)

Returns: 4:30pm

PRICE:

Adult	\$229
Child 4-16 years	\$183
Family 2 adults and 2 children	\$700

NAVIGATORS CRUISES

NAVHBA