



Wai-O-Tapu, Rotorua

As diverse as it is beautiful, New Zealand's North Island is a holiday destination for every taste. For friends and fun, for couples and families, for action and adventure or for rest and relaxation, let your imagination be your guide as you explore the island's rich culture and incredible landscapes.

Whatever your holiday style, you're bound to find your ideal itinerary here. Up for some sun and fun at the beach? Take to the cities and relative sophistication of the east coast or kick back and chill out in the soulful simplicity of the west. In the subtropical Northland, the two combine in an aquatic playground where adventure and relaxation are expertly balanced.

You'll find the fascinating culture of New Zealand woven through an array of experiences, making your stay even more special. Away from the cities, see how traditional artists and craftspeople have made the Coromandel their home while making it a haven for travellers. Make sure to drop into their studios – they'd love to share their work. A tour around nearby beaches and a snorkel off the coast gives an insight into their creative inspiration.

The North Island's cities offer everything you'd expect in terms of heritage buildings, museums and galleries, but with the added bonus of stunning harbour scenery in Wellington and proximity to beaches, hiking trails and islands in Auckland. Split your time between cultural pursuits and fun in the sun amid a scene of world class shopping and restaurants.

Throughout the centre of the North Island volcanoes and geothermal activity make for a unique experience. Bubbling mud pools, hot springs and the erupting geysers of Rotorua are quintessentially New Zealand. Immerse yourself in Maori culture and learn about the proud traditions and heritage before you head further south and join the locals for a spot of fishing on Lake Taupo or skiing and hiking in Tongariro National Park.

With so many unique sights and experiences just waiting to be discovered, it's easy to make your North Island holiday whatever you want it to be.





Devonport, Auckland

Auckland is your step-off point for North Island exploration. New Zealand's largest city is packed with culture, which means great food, wine and shopping. Wherever you go in Auckland you're never far from amazing adventures, beautiful beaches, volcanoes, vineyards and small holiday islands – it really is an idyllic destination.

Visit the Otara Market to get a feel for the Maori and Polynesian culture. Pick up some floral fabrics, Maori carvings and tropical produce or browse the historic Victoria Park Market for arts and crafts, clothing and jewellery before checking out the New Zealand Walk of Fame.

Explore the bustling city before heading out on the water. Find dolphins and whales in Hauraki Gulf Marine Park or sail on an America's Cup racing yacht. Take the ferry to Rangitoto Island to get a closer look at the volcano and scale the summit, or explore the beaches, vineyards and olive groves of nearby Waiheke Island.

A trip to Auckland wouldn't be complete without some serious adventure. Experience exhilarating views high above the city centre from Sky Tower and get the adrenaline pumping as you leap from the tower or walk the outside perimeter. If it's outdoor adventure you're craving, head out of the city to the Waitakere Ranges for abseiling, swimming and rock slides, or enjoy the west coast beaches of Muriwai, Bethells, Piha and Karekare, where surf laps the black sand of the volcanic shores.

Beyond Auckland, tour the west coast and Kumeu wine region or head to Goat Island Marine Reserve and snorkel with colourful fish. Whatever you decide, your days are certain to be filled with fun and adventure.

Our Favourites

Check out the views from Sky Tower

Explore the shops, bars and cafés of Viaduct Harbour & Britomart precinct

Cruise around Auckland Harbour

Explore Devonport's galleries and boutiques, a short ferry ride away

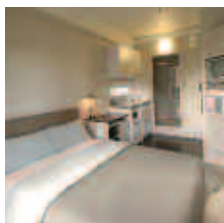
Explore the Hauraki Gulf islands, easily accessible from Auckland



FIND YOUR ACCOMMODATION

REF.	APARTMENTS	PAGE
8	Hotel Grand Chancellor Auckland City ◆◆◆◆	16
13	Oaks iStay Residences ◆◆◆◆◆	19
9	Quay West Suites Auckland ★★★★★	21
5	The Sebel Suites Auckland ★★★★★	20
1	Waves Motel, Orewa ◆◆◆◆◆	22
14	Waldorf Celestion Apartments Hotel ★★★★★	20
Other properties available		
15	Chifley Suites Auckland ★★★★★	-
REF.	HOTELS	PAGE
16	All Seasons Auckland ★★★	15
30	Amora Hotel Auckland ★★★★★	18
27	Auckland City Hotel – Hobson Street ★★★★★	15
18	Best Western President Hotel Auckland ◆◆◆	15
6	Copthorne Hotel Auckland Harbourcity ★★★★★	16
26	Crowne Plaza Auckland ★★★★★	18
3	Hilton Auckland ★★★★★	21
33	Holiday Inn Auckland Airport ★★★★★	18
34	Hotel Grand Chancellor Auckland Airport ★★★★★	16
31	The Langham, Auckland ★★★★★	20
10	Mercure Auckland ★★★★★	17
12	Mercure Auckland Windsor ★★★★★	16
19	Pullman Auckland ★★★★★	21
20	The Quadrant Hotel Auckland ◆◆◆◆	17
23	Quality Hotel Barrycourt ★★★★★	17
32	Quality Inn West End ★★★★★	17
28	Rendezvous Hotel Auckland ★★★★★	19
11	Rydges Auckland ★★★★★	19
25	SKYCITY Grand Hotel Auckland ★★★★★	22
24	SKYCITY Hotel Auckland ★★★★★	19
2	The Spencer on Byron Hotel, Takapuna Beach ★★★★★	22
35	Sudima Hotel Auckland Airport ◆◆◆◆	18
Other properties available		
17	CityLife Auckland ★★★★★	-
22	Copthorne Hotel Auckland City ★★★★★	-
4	Hurakia Lodge, Rakino Island ◆◆◆◆◆	-
36	Ibis Ellerslie ★★★★★	-
21	Kingsgate Hotel Parnell, Auckland ★★★★★	-
37	Novotel Auckland Ellerslie ★★★★★	-
29	Scenic Hotel Auckland ★★★★★	-
7	The Westin Auckland Lighter Quay ★★★★★	-

All Seasons Auckland ★★★



Located just off Queen Street in the heart of the city, the hotel is just a short walk from major Auckland attractions including the Viaduct Harbour.

City Centre 300m
Map page 14 Ref. 16

20 Wyndham Street, Auckland

PROPERTY FEATURES:

- 24 hour reception
- Café
- Lift

ACCOMMODATION FEATURES:

- Balcony
- Fan
- Tea/coffee making facilities
- Refrigerator
- Microwave
- Internet access (broadband)
- Ironing facilities
- All rooms non smoking

Note: Rooms are compact.

Room serviced daily

From \$64 PER ROOM PER NIGHT*

1 APR – 7 SEP, 12 – 15 SEP, 19 – 20 SEP, 27 – 28 SEP, 3 – 13 OCT, 25 OCT 11 – 31 MAR 12	ADULTS	1 NT	3 NTS	5 NTS
Standard	1 to 2	64	190	316

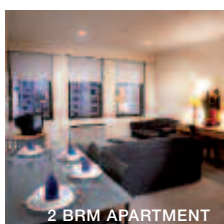
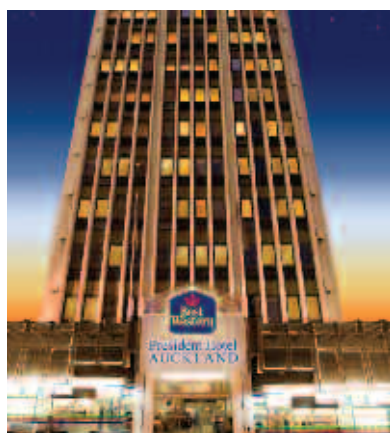
Other prices apply for Rugby World Cup.

Children 0 to 15 years – 1 child free when sharing with an adult and using existing bedding.

Max capacity 2.

ALLAKL

Best Western President Hotel Auckland ◆◆◆◆



Good value accommodation ideally located in the heart of the CBD just minutes to Queen Street and Sky Tower.

City Centre 250m
Map page 14 Ref. 18

27-35 Victoria Street West, Auckland

PROPERTY FEATURES:

- 24 hour reception
- Restaurant
- Room service (limited)
- Fitness centre
- Internet access (wireless)
- Laundry/dry cleaning service
- Parking (undercover security – limited)
- Lift
- Non smoking

ACCOMMODATION FEATURES:

- Air-conditioning
- Kitchen (2 Bedrooms)
- Microwave
- Tea/coffee making facilities
- In-room movies (pay to view)
- Internet access (wireless)
- Ironing facilities
- Hair dryer

Room serviced daily

From \$101 PER ROOM PER NIGHT*

1 APR – 31 AUG 11	ADULTS	1 NT	3 NTS	5 NTS
Standard Studio	1 to 2	101	303	505
Corporate Studio/1 Bedroom Suite	1 to 2	112	334	556
Superior Studio Triple	1 to 3	133	398	662
2 Bedroom Family Unit	1 to 4	164	492	820
2 Bedroom Apartment	1 to 4	175	525	875

1 NOV 11 – 31 MAR 12	ADULTS	1 NT	3 NTS	5 NTS
Standard Studio	1 to 2	123	367	611
Corporate Studio/1 Bedroom Suite	1 to 2	133	398	662
Superior Studio Triple	1 to 3	154	461	769
2 Bedroom Family Unit	1 to 4	186	556	926
2 Bedroom Apartment	1 to 4	196	587	977

Other prices apply for Rugby World Cup.

Children 0 to 12 years – 1 child free when sharing with an adult and using existing bedding.

Max capacity Standard Studio/Corporate Studio – 2, 1 Bedroom Suite/Superior Studio Triple – 3, 2 Bedroom Family Unit/2 Bedroom Apartment – 5.

PREAKL

Auckland City Hotel – Hobson Street ★★★★★



157 Hobson Street, Auckland

Ideally located in the heart of Auckland's entertainment and business district with easy access to motorways and only five minutes walk to the Sky Tower, Aotea Square, Civic Theatre and Queen Street, the hotel offers convenient, environmentally friendly accommodation.

The hotel has retained the character and charm of its past, enhanced with contemporary décor and modern conveniences. Enjoy a meal at The Mustard Seed Malaysian Café and Restaurant or escape the inner city rush at Jireh Wellness Spa – the Auckland City Hotel is here to serve more than just your accommodation needs.

PROPERTY FEATURES:

- Jireh Wellness Spa
- Restaurant
- Café
- Bar
- Room service (limited)
- Guest lounge
- Gymnasium
- Internet access (wireless)
- Laundry/dry cleaning service
- Parking (undercover valet)
- Non smoking

ACCOMMODATION FEATURES:

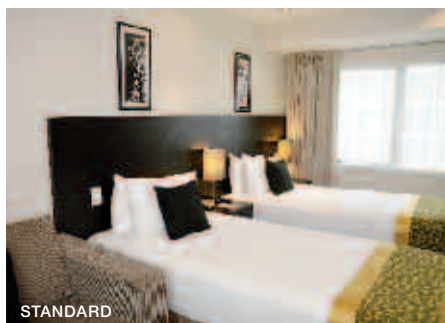
- Air-conditioning
- Fan
- Limited cooking facilities (except Standard rooms)
- Tea/coffee making facilities
- Mini bar
- In-room movies (free)
- Internet access (broadband)
- Ironing facilities
- Hair dryer

Room serviced daily

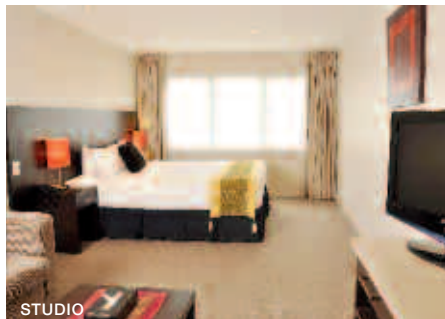
City Centre 500m
Map page 14 Ref. 27



From \$87 PER ROOM PER NIGHT*



STANDARD



STUDIO

1 APR – 4 SEP 11	ADULTS	1 NT	3 NTS	5 NTS
Standard	1 to 2	87	260	434
Studio	1 to 2	95	284	473
2 Bedroom Suite	1 to 2	182	544	907

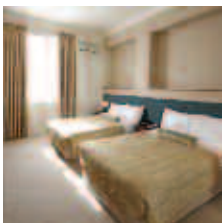
26 OCT 11 – 31 MAR 12	ADULTS	1 NT	3 NTS	5 NTS
Standard	1 to 2	95	284	473
Studio	1 to 2	103	308	513
2 Bedroom Suite	1 to 2	208	622	1037

Children 0 to 11 years – free when sharing with an adult and using existing bedding. Cot free of charge.

Max capacity Standard – 3, Studio – 4, 2 Bedroom Suite – 5.

ACHAKL

Mercure Auckland Windsor ★★★☆



A boutique style hotel located in central Queen Street, surrounded by shops, theatres and restaurants.

City Centre 350m
Map page 14 Ref. 12

58-60 Queen Street, Auckland

PROPERTY FEATURES:

- Restaurant ▪ Bar ▪ Spa ▪ Sauna
- Room service (limited) ▪ Gymnasium
- Laundry/dry cleaning service
- Parking (undercover security)

ACCOMMODATION FEATURES:

- Air-conditioning ▪ Mini bar
- Tea/coffee making facilities
- Limited cooking facilities with microwave (except Mercure Guest Rooms)
- Cable TV ▪ Internet access (broadband)
- Ironing facilities ▪ Hair dryer

Room serviced daily



From **\$99** PER ROOM PER NIGHT*

1 APR – 4 AUG, 7 AUG – 7 SEP, 12 – 15 SEP, 19 – 20 SEP, 27 – 28 SEP 11	ADULTS	1 NT	3 NTS	5 NTS
Mercure Guest Room	1 to 2	99	296	493
Deluxe Room	1 to 2	129	386	643
1 Bedroom	1 to 2	182	544	907
3 – 13 OCT, 25 OCT 11 – 31 MAR 12	ADULTS	1 NT	3 NTS	5 NTS
Mercure Guest Room	1 to 2	150	450	749
Deluxe Room	1 to 2	179	537	895
1 Bedroom	1 to 2	232	695	1159

Other prices apply 5 – 6 Aug 11 and Rugby World Cup.

Children 0 to 15 years – up to 2 children free when sharing with an adult and using existing bedding.

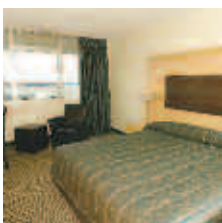
Max capacity 3. **MEWAKL**

TRAVELPOINT BONUS

FREE NZD50 food and beverage credit per room per stay for stays of 3 nights or more, valid 1 Apr – 4 Aug, 7 – 24 Aug 11.

FREE breakfast for up to 2 children 0 to 15 years when dining with paying adults in the hotel restaurant.

Copthorne Hotel Auckland Harbournity ★★★★★



A fantastic waterfront location providing easy access to Viaduct Harbour, the CBD, shopping, bars and restaurants.

City Centre 900m
Map page 14 Ref. 6

196-200 Quay Street, Auckland

PROPERTY FEATURES:

- 24 hour reception ▪ Restaurant
- Bar ▪ Room service (24 hour)
- Gymnasium ▪ Sauna
- Internet access (wireless)
- Laundry/dry cleaning service
- Parking (undercover security)

ACCOMMODATION FEATURES:

- Harbour views ▪ Air-conditioning
- Fan ▪ Tea/coffee making facilities
- Cable TV ▪ Internet access (broadband)
- Ironing facilities ▪ Hair dryer

Room serviced daily



From **\$121** PER ROOM PER NIGHT*

1 APR – 8 SEP, 11 – 16 SEP, 18 – 21 SEP, 23 SEP, 26 – 29 SEP 11	ADULTS	1 NT	3 NTS	5 NTS
Standard	1 to 2	121	362	603
26 – 31 OCT, 1 DEC 11 – 31 JAN 12	ADULTS	1 NT	3 NTS	5 NTS
Standard	1 to 2	134	400	666
1 – 30 NOV 11, 1 FEB – 31 MAR 12	ADULTS	1 NT	3 NTS	5 NTS
Standard	1 to 2	164	490	816

Other prices apply for Rugby World Cup.

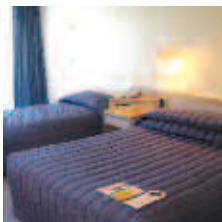
Children 0 to 13 years – up to 2 children free when sharing with an adult and using existing bedding. Cot free of charge.

Max capacity 3 adults or 2 adults/2 children. **COPAKL**

TRAVELPOINT BONUS

FREE breakfast for 2 adults daily for stays of 3 nights or more.

Hotel Grand Chancellor Auckland Airport ★★★★★



Large rooms surrounded by landscaped gardens, located within five minutes drive of the international and domestic airports.

Airport 4km
City Centre 17km
Map page 14 Ref. 34

Corner Kirkbride and Ascot Roads, Airport Oaks, Auckland

PROPERTY FEATURES:

- Restaurant ▪ Room service (24 hour)
- Café ▪ Bar ▪ Barbecue area ▪ Pool
- Sauna ▪ Laundry/dry cleaning service
- Gymnasium ▪ Internet access (wireless)
- Non smoking

ACCOMMODATION FEATURES:

- Air-conditioning ▪ Mini bar
- Tea/coffee making facilities
- In-room movies (pay to view)
- Cable TV ▪ Internet access (wireless)
- Ironing facilities ▪ Hair dryer

Room serviced daily



From **\$116** PER ROOM PER NIGHT*

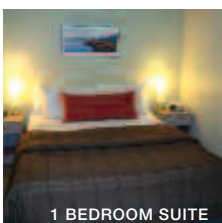
1 APR – 31 AUG 11	ADULTS	1 NT	3 NTS	5 NTS
Standard	1 to 2	116	346	576
1 – 7 SEP, 11 – 15 SEP, 19 – 22 SEP, 26 – 29 SEP, 3 – 12 OCT, 26 OCT 11 – 31 MAR 12	ADULTS	1 NT	3 NTS	5 NTS
Standard	1 to 2	145	433	721

Other prices apply for Rugby World Cup. Room and Breakfast prices also available.

Children 0 to 12 years – free when sharing with an adult and using existing bedding. Cot free of charge.

Max capacity 3 adults or 2 adults/2 children. **HGCAKL**

Hotel Grand Chancellor Auckland City ◆◆◆◆



Centrally located hotel overlooking Auckland's famous Viaduct Harbour, within walking distance of the CBD, shopping and casino.

City Centre 500m
Map page 14 Ref. 8

1 Hobson Street, Auckland

PROPERTY FEATURES:

- 24 hour reception ▪ Restaurant ▪ Café
- Bar ▪ Room service (24 hour) ▪ Spa
- Pool (heated indoor) ▪ Gymnasium
- Sauna ▪ Laundry/dry cleaning service
- Parking (undercover)

ACCOMMODATION FEATURES:

- Air-conditioning ▪ Balcony ▪ Mini bar
- Limited cooking facilities with microwave and dishwasher (Studio and 1 Brm Suites)
- Kitchen with microwave and dishwasher (2 Bedroom Apartments)
- Tea/coffee making facilities ▪ Cable TV
- Internet access (broadband)

Apartment serviced daily

From **\$125** PER ROOM PER NIGHT*

1 APR – 31 AUG 11	ADULTS	1 NT	3 NTS	5 NTS
Studio Suite	1 to 2	125	374	623
1 Bedroom Suite	1 to 2	147	440	733
2 Bedroom Apartment	1 to 4	192	575	958
1 – 7 SEP, 11 – 15 SEP, 19 – 22 SEP, 26 – 29 SEP, 3 – 12 OCT, 26 OCT 11 – 31 MAR 12	ADULTS	1 NT	3 NTS	5 NTS
Studio Suite	1 to 2	136	407	678
1 Bedroom Suite	1 to 2	158	473	788
2 Bedroom Apartment	1 to 4	204	610	1017

Other prices apply for Rugby World Cup. 1 Brm Apt prices also available.

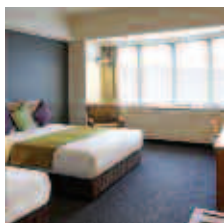
Children 0 to 12 years – free when sharing with an adult and using existing bedding. Cot free of charge.

Max capacity Studio Suite – 2, 1 Brm Suite – 3 adults or 2 adults/2 children, 2 Brm Apt – 4 adults/1 child. **HGRAKL**

TRAVELPOINT BONUS

FREE upgrade to the next room type for stays of 3 nights or more (subject to availability).

Mercure Auckland ★★★★★



Ideally located overlooking the harbour and city, within walking distance of shopping, restaurants and Viaduct Harbour.

City Centre 800m
Map page 14 Ref. 10

8 Customs Street, Auckland

PROPERTY FEATURES:

- Restaurant
- Bar
- Room service (24 hour)
- Gymnasium
- Laundry/dry cleaning service

ACCOMMODATION FEATURES:

- Air-conditioning
- Tea/coffee making facilities
- Mini bar
- In-room movies (pay to view)
- Cable TV
- Internet access (wireless)

Room serviced daily

From **\$119** PER ROOM PER NIGHT*

1 APR – 4 AUG, 7 AUG – 7 SEP, 12 – 15 SEP, 19 – 20 SEP, 27 – 28 SEP 11	ADULTS	1 NT	3 NTS	5 NTS
Mercure Guest Room	1 to 2	119	357	595
Deluxe	1 to 2	155	464	773
1 Bedroom	1 to 2	201	603	1005
3 – 13 OCT, 25 OCT 11 – 31 MAR 12	ADULTS	1 NT	3 NTS	5 NTS
Mercure Guest Room	1 to 2	158	473	788
Deluxe	1 to 2	193	579	965
1 Bedroom	1 to 2	240	719	1198

Other prices apply 5 – 6 Aug 11 and Rugby World Cup.

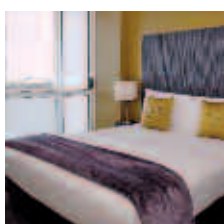
Children 0 to 15 years – up to 2 children free when sharing with 2 adults and using existing bedding.

Max capacity Mercure Guest Room – 2, Deluxe – 3 adults or 2 adults/2 children, 1 Bedroom – 3. **MERAKL**

TRAVELPOINT BONUS

FREE NZD50 food and beverage credit per room per stay for stays of 3 nights or more, valid 1 Apr – 4 Aug, 7 – 24 Aug 11.

The Quadrant Hotel Auckland ◆◆◆◆



Auckland's hippest apartment style hotel. Centrally located, featuring the trendy Quad Kitchen and intimate Quad Bar.

City Centre 850m
Map page 14 Ref. 20

10 Waterloo Quadrant, Auckland

PROPERTY FEATURES:

- 24 hour reception
- Restaurant
- Café
- Bar
- Internet access (wireless – free)
- Room service (24 hour)
- Fitness centre
- Parking (valet)
- Non smoking

ACCOMMODATION FEATURES:

- Air-conditioning
- Balcony
- Mini bar
- Limited cooking facilities with microwave and dishwasher (Studios and 1 Brms)
- Kitchen with microwave and dishwasher (Executive 1 Brms, 2 Brms & Penthouses)
- In-room movies (pay to view)
- Cable TV
- Internet access (wireless – free)
- CD/DVD player
- Hair dryer
- Washer/dryer

Room serviced daily

From **\$111** PER ROOM PER NIGHT*

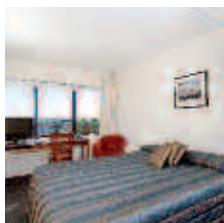
1 APR – 14 AUG 11	ADULTS	1 NT	3 NTS	5 NTS
Studio	1 to 2	111	331	552
1 Bedroom	1 to 2	143	428	713
Executive 1 Bedroom	1 to 2	194	582	970
2 Bedroom	1 to 4	227	681	1135
Penthouse	1 to 2	415	1244	2073
25 OCT 11 – 31 MAR 12	ADULTS	1 NT	3 NTS	5 NTS
Studio	1 to 2	143	428	713
1 Bedroom	1 to 2	175	525	875
Executive 1 Bedroom	1 to 2	208	622	1037
2 Bedroom	1 to 4	240	719	1198
Penthouse	1 to 2	428	1282	2136

Other prices apply 15 Aug – 6 Sep 11.

Children 0 to 14 years – free when sharing with an adult and using existing bedding.

Max capacity Studio/Penthouse – 2, 1 Bedroom/Executive 1 Bedroom – 3, 2 Bedroom – 4. **QDRAKL**

Quality Hotel Barrycourt ★★★★★



Situated in the exclusive inner city suburb of beautiful Parnell, most apartment style units and hotel rooms enjoy extensive views.

City Centre 3.6km
Map page 14 Ref. 23

20 Gladstone Road, Parnell

PROPERTY FEATURES:

- 24 hour reception
- Restaurant
- Café
- Bar
- Room service (limited)
- Children's playground
- Internet access (wireless)
- Lift
- Parking

ACCOMMODATION FEATURES:

- Fan
- Tea/coffee making facilities
- Cable TV
- Internet access (wireless)
- Ironing facilities
- Hair dryer

Room serviced daily



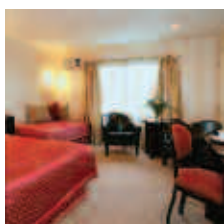
From **\$95** PER ROOM PER NIGHT*

1 APR 11 – 31 MAR 12	ADULTS	1 NT	3 NTS	5 NTS
Standard King	1 to 2	95	284	473
Double Balcony	1 to 2	115	343	572

Children 0 to 12 years – free when sharing with an adult and using existing bedding.

Max capacity 2. **QHBAKL**

Quality Inn West End ★★★★★



Located in the inner city suburb of Grey Lynn, featuring motel and hotel accommodation options suited to every traveller.

City Centre 2.9km
Map page 14 Ref. 32

465 Great North Road, Grey Lynn

PROPERTY FEATURES:

- 24 hour reception
- Restaurant
- Bar
- Room service (limited)
- Non smoking
- Pool (heated indoor)
- Spa
- Internet access (wireless)
- Parking

ACCOMMODATION FEATURES:

- Air-conditioning (except Motel Studios)
- Fan
- Limited cooking facilities (Motel Studios)
- In-room movies (pay to view)
- Internet access (broadband)

Room serviced daily



From **\$94** PER ROOM PER NIGHT*

1 APR – 31 AUG, 1 NOV 11 – 31 MAR 12	ADULTS	1 NT	3 NTS	5 NTS
Motel Studio	1 to 2	94	282	469
Standard	1 to 2	102	305	509
Deluxe	1 to 2	110	329	548

Other prices apply for Rugby World Cup.

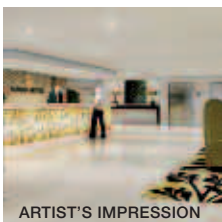
Children 0 to 12 years – up to 2 children free when sharing with 2 adults and using existing bedding.

Max capacity Motel Studio – 4, Standard/Deluxe – 3. **QIWA KL**

Sudima Hotel Auckland Airport ◆◆◆◆



ARTIST'S IMPRESSION



ARTIST'S IMPRESSION

Open in May 2011, the hotel is located only three minutes drive from Auckland Airport and offers well appointed rooms.

Airport 3km
City Centre 21km
Map page 14 Ref. 35

18 Airpark Drive, Mangere

PROPERTY FEATURES:

- 24 hour reception
- Restaurant
- Bar
- Room service (24 hour)
- Pool (heated indoor)
- Gymnasium
- Internet facilities
- Parking
- Non smoking
- Courtesy airport transfers (available if pre-booked)

ACCOMMODATION FEATURES:

- Air-conditioning
- Barbecue
- Tea/coffee making facilities
- Cable TV
- Internet access (wireless)
- Ironing facilities

Room serviced daily



From **\$134** PER ROOM PER NIGHT*

1 MAY – 4 SEP 11	ADULTS	1 NT	3 NTS	5 NTS
Standard	1 to 2	134	400	666
25 OCT 11 – 31 MAR 12	ADULTS	1 NT	3 NTS	5 NTS
Standard	1 to 2	152	454	757

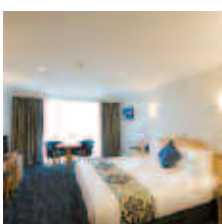
Other prices apply for Rugby World Cup.

Children 0 to 12 years – free when sharing with an adult and using existing bedding. Cot free of charge.

Max capacity 3.

SUDAKL

Amora Hotel Auckland ★★★★★



A boutique hotel with tranquil views over Myers Park or tree-lined Greys Avenue, an oasis in central Auckland.

City Centre 1km
Map page 14 Ref. 30

100 Greys Avenue, Auckland

PROPERTY FEATURES:

- 24 hour reception
- Room service (24 hour)
- Restaurant
- Bar
- Pool (heated outdoor)
- Café
- Spa
- Exercise equipment
- Internet access (wireless)
- Laundry/dry cleaning service
- Lift
- Parking (undercover)

ACCOMMODATION FEATURES:

- Air-conditioning
- Balcony
- Limited cooking facilities
- Mini bar
- In-room movies (pay to view)
- Internet access (wireless)
- Hair dryer
- Ironing facilities
- Washer/dryer

Room serviced daily



From **\$142** PER ROOM PER NIGHT*

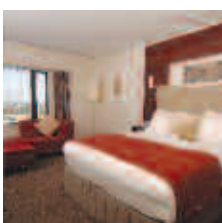
1 APR – 31 AUG 11	ADULTS	1 NT	3 NTS	5 NTS
Deluxe	1 to 4	142	424	706
Deluxe Spa	1 to 2	175	525	875
Executive Suite	1 to 3	204	610	1017
1 Bedroom	1 to 3	237	710	1182
1 – 30 NOV 11, 1 FEB – 31 MAR 12	ADULTS	1 NT	3 NTS	5 NTS
Deluxe	1 to 4	181	542	903
Deluxe Spa	1 to 2	215	643	1072
Executive Suite	1 to 3	243	728	1214
1 Bedroom	1 to 3	276	828	1379
1 DEC 11 – 31 JAN 12	ADULTS	1 NT	3 NTS	5 NTS
Deluxe	1 to 4	153	457	761
Deluxe Spa	1 to 2	186	558	930
Executive Suite	1 to 3	215	643	1072
1 Bedroom	1 to 3	249	745	1241

Other prices apply for Rugby World Cup.

Children 0 to 11 years – free when sharing with an adult and using existing bedding.

Max capacity Deluxe – 3 adults or 2 adults/2 children, Deluxe Spa/Executive Suite/1 Brm – 2. **AMOAKL**

Crowne Plaza Auckland ★★★★★



Ideally located in the CBD above the Atrium on Elliott shopping complex and just minutes walk to Auckland's attractions.

City Centre 300m
Map page 14 Ref. 26

128 Albert Street, Auckland

PROPERTY FEATURES:

- Restaurant
- Room service (24 hour)
- Bar
- Sauna
- Gymnasium
- Internet access (wireless)
- Parking

ACCOMMODATION FEATURES:

- Air-conditioning
- Mini bar
- Cable TV
- Tea/coffee making facilities
- Hair dryer
- In-room movies (pay to view)
- Internet access (broadband)

Room serviced daily



KING CLUB ROOMS INCLUDE:

- Access to the Club Lounge
- Light breakfast daily
- Evening drinks and canapés

From **\$123** PER ROOM PER NIGHT*

1 APR – 8 SEP, 11 – 15 SEP, 19 – 21 SEP, 26 – 29 SEP, 1 DEC 11 – 31 JAN 12	ADULTS	1 NT	2 NTS	5 NTS
Superior	1 to 2	184	368	918
King Club	1 to 2	274	547	1367

Other prices apply 3 – 12 Oct, 24 Oct – 30 Nov 11, 1 Feb – 31 Mar 12 and Rugby World Cup. Room and Breakfast prices also available.

Children 0 to 19 years – free when sharing with an adult and using existing bedding. Cot free of charge.

Max capacity Superior – 3 adults or 2 adults/2 children, King Club – 2.

CROAKL

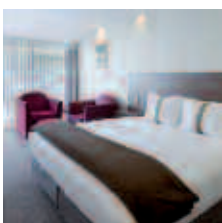
TRAVELPOINT BONUS

FREE Night Offer: Stay 3 nights, pay for 2.

FREE full buffet breakfast for 2 adults daily for stays of 2 nights or more, valid 1 Nov 11 – 31 Mar 12.

Offers not combinable.

Holiday Inn Auckland Airport ★★★★★



Contemporary hotel rooms set amongst 10 acres of tranquil gardens. Located out of flight paths but close to the airport.

Airport 4km
City Centre 16km
Map page 14 Ref. 33

2 Ascot Road, Airport Oaks

PROPERTY FEATURES:

- 24 hour reception
- Restaurant
- Bar
- Room service (24 hour)
- Pool
- Fitness centre
- Non smoking
- Internet access (wireless)
- Parking

ACCOMMODATION FEATURES:

- Air-conditioning
- Balcony
- Mini bar
- Cable TV
- In-room movies (pay to view)
- Internet access (broadband)

Room serviced daily



From **\$147** PER ROOM PER NIGHT*

1 APR – 8 SEP, 11 – 16 SEP, 19 – 23 SEP, 27 – 30 SEP, 15 DEC 11 – 31 JAN 12	ADULTS	1 NT	3 NTS	5 NTS
Standard	1 to 2	147	440	733
Deluxe	1 to 2	169	506	843
Tower Suite	1 to 2	248	743	1237
3 – 14 OCT, 18 – 20 OCT, 25 OCT – 14 DEC 11, 1 FEB – 31 MAR 12	ADULTS	1 NT	3 NTS	5 NTS
Standard	1 to 2	176	528	879
Deluxe	1 to 2	198	594	989
Tower Suite	1 to 2	277	830	1383

Other prices apply for Rugby World Cup.

Children 0 to 19 years – free when sharing with an adult and using existing bedding. Cot free of charge.

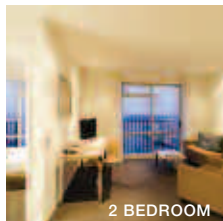
Max capacity Standard/Deluxe – 3, Tower Suite – 2. **HOLAKL**

TRAVELPOINT BONUS

FREE return transfers from Auckland Airport for 2 adults.

FREE breakfast for children 0 to 12 years when dining from the kids menu with paying adults in the hotel restaurant.

Oaks iStay Residences ◆◆◆◆◆



The tallest apartment tower in New Zealand, offering apartment style accommodation with views of the harbour and city.

City Centre 900m
Map page 14 Ref. 13

16 Gore Street, Auckland

PROPERTY FEATURES:

- 24 hour reception
- Pool ■ Gymnasium
- Laundry service ■ Lift
- Parking (undercover off-site)
- Non smoking

ACCOMMODATION FEATURES:

- Balcony ■ Cable TV ■ CD/DVD player
- Kitchen with microwave and dishwasher
- Internet access (broadband)
- Ironing facilities ■ Hair dryer
- Washer/dryer

Room serviced daily (except unserviced prices)



From **\$97** PER ROOM PER NIGHT*

1 APR – 31 AUG, 26 OCT 11 – 31 MAR 12	ADULTS	1 NT	2 NTS	7 NTS
Studio Unserviced	1 to 2	121	210	679
Studio	1 to 2	121	242	789
1 Bedroom Unserviced	1 to 2	137	242	789
1 Bedroom	1 to 2	137	273	899
2 Bedroom Unserviced	1 to 4	182	331	1103
2 Bedroom	1 to 4	182	363	1214

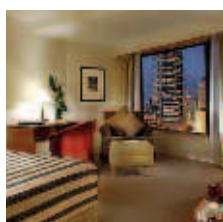
Other prices apply for Rugby World Cup.

Children 0 to 11 years – free when sharing with an adult and using existing bedding.

Max capacity Studio/1 Bedroom – 2, 2 Bedroom – 4.

OARAKL

Rendezvous Hotel Auckland ★★★★★



Located in the heart of Auckland, within walking distance of some of the city's shopping, finest dining and entertainment.

City Centre 600m
Map page 14 Ref. 28

Cnr Mayoral Dr and Vincent St, Auckland

PROPERTY FEATURES:

- 24 hour reception ■ Restaurants (2)
- Bar ■ Pool (heated indoor) ■ Gymnasium
- Barbecue area ■ Parking
- Laundry/dry cleaning service

ACCOMMODATION FEATURES:

- Air-conditioning ■ Ironing facilities
- Tea/coffee making facilities ■ Mini bar
- Internet access (broadband)
- In-room movies (pay to view) ■ Hair dryer

Room serviced daily



CLUB ROOMS INCLUDE:

- Access to the Club Lounge ■ Light breakfast, evening drinks and canapés daily

From **\$103** PER ROOM PER NIGHT*

1 APR – 4 SEP, 16 DEC 11 – 15 JAN 12	ADULTS	1 NT	2 NTS	4 NTS
Deluxe	1 to 2	137	273	409
Club Room	1 to 2	196	391	587

25 OCT – 15 DEC 11, 16 JAN – 31 MAR 12	ADULTS	1 NT	2 NTS	4 NTS
Deluxe	1 to 2	160	319	478
Club Room	1 to 2	214	427	641

Other prices apply for Rugby World Cup.

Children 0 to 12 years – free when sharing with an adult and using existing bedding. Cot free of charge.

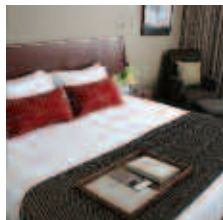
Max capacity 3.

RENAKL

TRAVELPOINT BONUS

FREE Night Offer: Stay 4 nights, pay for 3.
(4 night price includes 1 free night)

Rydges Auckland ★★★★★



A refreshing haven ideally located in the heart of the city, with the casino, bars and restaurants just a short walk away.

City Centre 180m
Map page 14 Ref. 11

Corner Federal and Kingston Streets, Auckland

PROPERTY FEATURES:

- 24 hour reception ■ Restaurant
- Bar ■ Room service (24 hour)
- Internet access (wireless) ■ Gymnasium
- Parking ■ Non smoking

ACCOMMODATION FEATURES:

- Air-conditioning ■ Mini bar
- Tea/coffee making facilities
- In-room movies (pay to view)
- Internet access (broadband) ■ Safe
- Ironing facilities ■ Hair dryer

Room serviced daily



From **\$105** PER ROOM PER NIGHT*

1 APR – 31 AUG 11	ADULTS	1 NT	3 NTS	5 NTS
Superior	1 to 2	157	314	628
Deluxe	1 to 2	176	352	703

1 NOV 11 – 31 MAR 12	ADULTS	1 NT	3 NTS	5 NTS
Superior	1 to 2	202	404	807
Deluxe	1 to 2	243	486	971

Other prices apply for Rugby World Cup.

Children 0 to 12 years – up to 2 children free when sharing with an adult and using existing bedding. Cot free of charge.

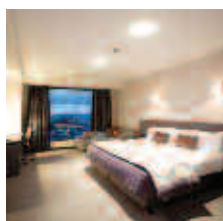
Max capacity 3 adults or 2 adults/2 children.

RYDAKL

TRAVELPOINT BONUS

FREE Night Offer: Stay 3 nights, pay for 2.
(3 and 5 night prices include 1 free night)

SKYCITY Hotel Auckland ★★★★★



Ideally located in the heart of Auckland, this hotel offers spacious rooms, with the Sky Tower right at your doorstep.

City Centre 50m
Map page 14 Ref. 24

Cnr Federal and Victoria Streets, Auckland

PROPERTY FEATURES:

- Day spa ■ 24 hour reception ■ Casino
- Restaurants and bars (20) ■ Theatre/treat
- Room service (24 hour) ■ Gymnasium
- Laundry/dry cleaning service
- Parking (undercover security)

ACCOMMODATION FEATURES:

- Air-conditioning ■ Mini bar ■ Cable TV
- Tea/coffee making facilities ■ Hair dryer
- In-room movies (pay to view) ■ Safe
- iPod docking station ■ Ironing facilities
- Internet access (broadband)
- Bathrobes (Premium Suites)

Room serviced daily



From **\$145** PER ROOM PER NIGHT*

1 APR – 30 AUG, 1 DEC 11 – 31 JAN 12	ADULTS	1 NT	3 NTS	5 NTS
Skycity	1 to 2	145	435	725
Premium Harbour	1 to 2	175	525	875
Premium Suite	1 to 2	260	780	1300

1 – 30 NOV 11, 1 FEB – 31 MAR 12	ADULTS	1 NT	3 NTS	5 NTS
Skycity	1 to 2	175	525	875
Premium Harbour	1 to 2	206	617	1029
Premium Suite	1 to 2	266	797	1328

Other prices apply for Rugby World Cup.

Children 0 to 14 years – up to 2 children free when sharing with 2 adults and using existing bedding.

Max capacity 2 adults/2 children.

SKYAKL

The Sebel Suites Auckland ★★★★★



85-89 Customs Street, West Auckland

The Sebel Suites Auckland is an intimate 4½ star hotel perfectly positioned to soak up the atmosphere of Auckland and all that it has to offer.

Beautifully located on the Viaduct Harbour, this spacious suite style accommodation offers the independence of apartment style living with the convenience of a hotel. All studios and apartments include full kitchen facilities and in-suite laundries, separate bath and shower, bathrobes and all modern technology. Marina suites and Executive suites have a balcony overlooking the water from which you can take in the sights and sounds of the Viaduct Harbour. Chargeback facilities are available at a selection of restaurants and bars surrounding the water's edge.

PROPERTY FEATURES:

- 24 hour reception
- Room service (24 hour) ■ Internet facilities
- Laundry/dry cleaning service
- Safety deposit box ■ Lift
- Parking (undercover) ■ Non smoking

ACCOMMODATION FEATURES:

- Harbour views (except City View rooms)
- Air-conditioning ■ Balcony
- Kitchen with microwave and dishwasher
- Mini bar ■ In-room movies (pay to view)
- Cable TV ■ CD/DVD player ■ Laundry ■ Safe
- iPod docking station ■ Bathrobes ■ Hair dryer
- Internet access (broadband and wireless)

Apartment serviced daily

City Centre 850m
Map page 14 Ref. 5



From **\$140** PER ROOM PER NIGHT*



1 BEDROOM MARINA DELUXE

1 APR – 31 AUG 11	ADULTS	1 NT	3 NTS	6 NTS
Studio Suite City View	1 to 2	140	419	837
1 Bedroom City View	1 to 2	158	473	946
1 Bedroom Marina	1 to 2	175	523	1045
1 Bedroom Marina Deluxe	1 to 2	193	577	1154
1 Bedroom Executive	1 to 2	193	577	1154
1 Bedroom Executive Deluxe	1 to 3	210	629	1258

26 OCT 11 – 5 MAR, 19 – 31 MAR 12	ADULTS	1 NT	3 NTS	6 NTS
Studio Suite City View	1 to 2	197	589	1177
1 Bedroom City View	1 to 2	214	641	1281
1 Bedroom Marina	1 to 2	234	700	1400
1 Bedroom Marina Deluxe	1 to 2	252	754	1508
1 Bedroom Executive	1 to 2	252	754	1508
1 Bedroom Executive Deluxe	1 to 3	269	806	1612

2 night minimum stay applies 30 Dec 11 – 1 Jan 12. Other prices apply 6 – 18 Mar 12 and Rugby World Cup.

Children 0 to 12 years – free when sharing with an adult and using existing bedding.

Max capacity Studio Suite City View/1 Bedroom Marina Deluxe/1 Bedroom Executive – 3, 1 Bedroom City View/1 Bedroom Marina – 2, 1 Bedroom Executive Deluxe – 4. **SEBAKL**

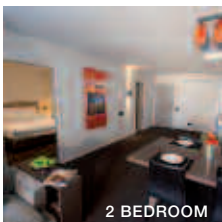
TRAVELPOINT BONUS

FREE Night Offer: Stay 7 nights in a 1 Bedroom Marina Deluxe, 1 Bedroom Executive or 1 Bedroom Executive Deluxe, pay for 6, valid 1 Apr – 31 Aug, 9 Dec 11 – 15 Jan 12.

FREE light breakfast for 2 adults daily for stays of 3 nights or more (except Studio Suite City View and 1 Bedroom City View), valid 1 Apr – 31 Aug, 9 Dec 11 – 15 Jan 12.

Offers not combinable.

Waldorf Celestion Apartments Hotel ★★★★★



2 BEDROOM

A stylish urban designed hotel offering breathtaking views over the city and located just a few minutes walk to the waterfront.

City Centre 1.2km
Map page 14 Ref. 14

19 Anzac Avenue, Auckland

PROPERTY FEATURES:

- 24 hour reception ■ Restaurant
- Bar ■ Guest lounge ■ Library
- Gymnasium ■ Internet access (wireless)
- Guest laundry ■ Parking (undercover)
- Non smoking

ACCOMMODATION FEATURES:

- Harbour views
- Air-conditioning ■ Balcony
- Kitchen with microwave and dishwasher
- In-room movies ■ CD/DVD player
- Internet access (broadband) ■ Laundry

Apartment serviced daily



From **\$129** PER ROOM PER NIGHT*

1 APR – 9 SEP 11	ADULTS	1 NT	3 NTS	5 NTS
1 Bedroom	1 to 2	129	386	643
1 Bedroom Executive	1 to 2	135	405	674
2 Bedroom	1 to 4	152	454	757

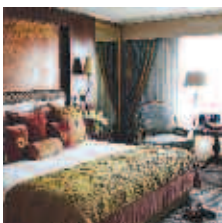
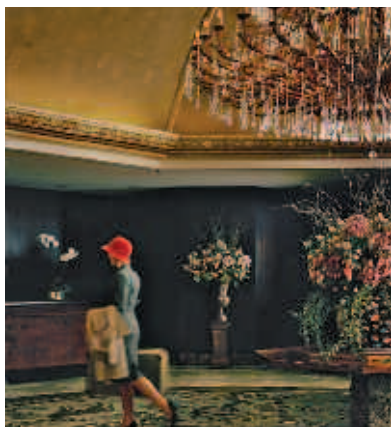
27 OCT 11 – 31 MAR 12	ADULTS	1 NT	3 NTS	5 NTS
1 Bedroom	1 to 2	142	426	710
1 Bedroom Executive	1 to 2	149	445	741
2 Bedroom	1 to 4	181	542	903

Other prices apply for Rugby World Cup.

Children 0 to 12 years – free when sharing with an adult and using existing bedding.

Max capacity 1 Bedroom/1 Bedroom Executive – 3, 2 Bedroom – 5. **WCAAKL**

The Langham, Auckland ★★★★★



A haven of tranquillity in the heart of the city, offering elegant rooms, classic charm and innovative amenities.

City Centre 1.3km
Map page 14 Ref. 31

83 Symonds Street, Auckland

PROPERTY FEATURES:

- Day spa ■ 24 hour reception ■ Restaurant
- Room service (24 hour) ■ Bar ■ Spa ■ Sauna
- Pool (heated outdoor) ■ Gymnasium
- Internet access (wireless) ■ Parking (valet)

ACCOMMODATION FEATURES:

- Air-conditioning ■ Cable TV ■ Mini bar
- In-room movies (pay to view)
- Internet access (broadband)

Room serviced daily

CLUB ROOMS, PARK & EXECUTIVE SUITES INCLUDE:

- Access to the Club Lounge • Evening drinks and canapés daily • Light breakfast daily
- Personalised check-in and butler service

From **\$118** PER ROOM PER NIGHT*

1 APR – 31 AUG, 16 DEC 11 – 15 JAN 12 [^]	ADULTS	1 NT	3 NTS	5 NTS
Classic Room	1 to 2	176	352	703
Executive Room	1 to 2	223	445	889
Club Room	1 to 2	331	662	1324
Park Suite	1 to 2	430	859	1718
Executive Suite	1 to 2	578	1155	2310

1 SEP – 15 DEC 11, 16 JAN – 31 MAR 12	ADULTS	1 NT	3 NTS	5 NTS
Classic Room	1 to 2	234	700	1166
Executive Room	1 to 2	286	856	1426
Club Room	1 to 2	399	1196	1994
Park Suite	1 to 2	502	1506	2510
Executive Suite	1 to 2	661	1981	3302

Children 0 to 17 years – free when sharing with an adult and using existing bedding.

Max capacity Classic Room – 3, Executive Room/Club Room/Park Suite/Executive Suite – 2. **LANAKL**

TRAVELPOINT BONUS

[^] **FREE Night Offer:** Stay 3 nights, pay for 2. (3 and 5 night prices include 1 free night)

Hilton Auckland ★★★★★



DLX HARBOUR VIEW PLUS

Located 300 metres out on the water on the end of Princes Wharf and only a five minute walk to the CBD and Viaduct Village.

City Centre 800
Map page 14 Ref. 3

Shed 21, Princes Wharf, 147 Quay St, Auckland

PROPERTY FEATURES:

- 24 hour reception
- Restaurant
- Bar
- Room service (24 hour)
- Sundeck
- Pool (heated outdoor)
- Gymnasium
- Massage facilities
- Parking (valet)
- Internet access (wireless)
- Non smoking

ACCOMMODATION FEATURES:

- Air-conditioning
- Balcony
- Mini bar
- Tea/coffee making facilities
- Cable TV
- In-room movies (pay to view)
- Safe
- CD/DVD player
- Bathrobes
- Hair dryer
- Internet access (broadband and wireless)
- Ironing facilities

Room serviced daily



From **\$252** PER ROOM PER NIGHT*

1 APR – 31 AUG 11	ADULTS	1 NT	3 NTS	5 NTS
Hilton Guest Room	1 to 2	252	754	1257
Deluxe Harbour View	1 to 2	310	929	1549
Deluxe Harbour View Plus	1 to 2	386	1156	1927
Bow Suite	1 to 2	646	1936	3227

1 – 7 SEP, 11 – 15 SEP, 18 – 20 SEP, 26 – 28 SEP, 2 – 12 OCT, 25 OCT 11 – 31 MAR 12	ADULTS	1 NT	3 NTS	5 NTS
Hilton Guest Room	1 to 2	379	1135	1891
Deluxe Harbour View	1 to 2	438	1312	2187
Deluxe Harbour View Plus	1 to 2	513	1539	2565
Bow Suite	1 to 2	773	2317	3861

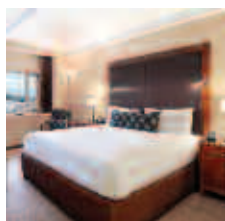
Other prices apply for Rugby World Cup. Relaxation Suite and Presidential Suite prices also available.

Children 0 to 14 years – up to 2 children free when sharing with 2 adults and using existing bedding.

Max capacity Hilton Guest Room – 2, Deluxe Harbour View, Deluxe Harbour View Plus, Bow Suite – 3.

HILAKL

Pullman Auckland ★★★★★



Ideally located just a few minutes walk from the CBD, offering stunning views of the Auckland harbour and parks.

City Centre 800
Map page 14 Ref. 19

Cnr Waterloo Qdrt and Princes St, Auckland

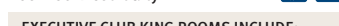
PROPERTY FEATURES:

- Day spa
- 24 hour reception
- Sauna
- Restaurant
- Room service (24 hour)
- Bar
- Pool
- Spa
- Exercise equipment
- Laundry/dry cleaning service
- Parking

ACCOMMODATION FEATURES:

- Air-conditioning
- Internet access (wireless)
- Tea/coffee making facilities
- Mini bar
- In-room movies (pay to view)
- Cable TV
- Ironing facilities

Room serviced daily



EXECUTIVE CLUB KING ROOMS INCLUDE:

- Access to the Pullman Club
- Light breakfast daily
- Evening drinks and canapés daily

From **\$164** PER ROOM PER NIGHT*

1 APR – 8 SEP, 10 – 16 SEP, 18 – 23 SEP, 26 – 30 SEP 11	ADULTS	1 NT	3 NTS	5 NTS
Superior View	1 to 2	164	490	816
Executive King View	1 to 2	203	608	1013
Executive Club King	1 to 2	242	726	1210

1 – 6 OCT, 8 – 13 OCT, 25 OCT 11 – 31 MAR 12	ADULTS	1 NT	3 NTS	5 NTS
Superior View	1 to 2	200	598	997
Executive King View	1 to 2	242	726	1210
Executive Club King	1 to 2	285	854	1423

Other prices apply for Rugby World Cup. Residence 1 and 2 Bedroom prices also available.

Children 0 to 12 years – free when sharing with an adult and using existing bedding.

Max capacity 2.

PULAKL

TRAVELPOINT BONUS

FREE buffet breakfast for 2 adults daily for stays of 2 nights or more, valid 1 Apr – 31 Aug 11.

Quay West Suites Auckland ★★★★★



8 Albert Street, Auckland

An exclusive, five star apartment hotel featuring spacious accommodation with superior service and facilities. All 1, 2 and 3 bedroom apartments are beautifully appointed offering large living areas with private furnished balconies.

Apartments feature fully equipped kitchens, separate bath and shower, in-suite laundries, LCD televisions, stereo/CD players and iPod docking stations. Most apartments offer breathtaking views overlooking Waitemata Harbour, The Harbour Bridge and Auckland's CBD.

After an exciting day of sight seeing The Roman Bath House is an indulgent way to relax and unwind. Whether this be relaxing in the indoor heated swimming pool, spa or sauna or working out in the gymnasium.

PROPERTY FEATURES:

- 24 hour reception
- Room service (24 hour)
- Pool (heated indoor)
- Spa
- Sauna
- Gymnasium
- Internet access (wireless)
- Internet facilities
- Safety deposit box
- Laundry/dry cleaning service
- Lift
- Parking (undercover)
- Non smoking

ACCOMMODATION FEATURES:

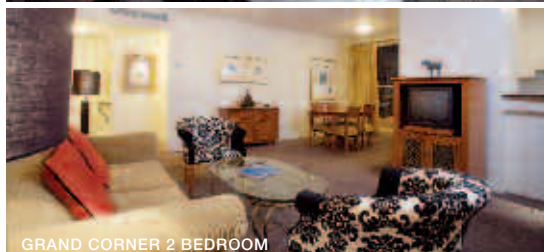
- Air-conditioning
- Balcony
- Mini bar
- Kitchen with microwave and dishwasher
- In-room movies (pay to view)
- Cable TV
- CD/DVD player
- iPod docking station
- Internet access (broadband and wireless)
- Laundry
- Safe
- Bathrobes
- Hair dryer
- 2 Bathrooms (2 Bedrooms and 3 Bedrooms)

Apartment serviced daily

City Centre 800
Map page 14 Ref. 9

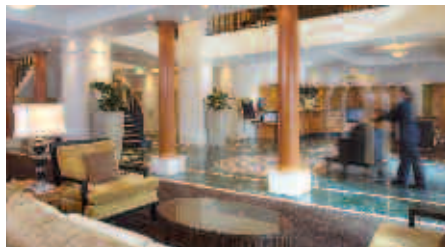


SUPERIOR 1 BEDROOM



GRAND CORNER 2 BEDROOM

From **\$179** PER ROOM PER NIGHT*



1 APR – 31 AUG 11	ADULTS	1 NT	3 NTS	7 NTS
Superior 1 Bedroom	1 to 2	179	537	1252
Superior 1 Bedroom High Floor	1 to 2	214	641	1495
Corner 2 Bedroom	1 to 4	268	802	1870
Grand Corner 2 Bedroom	1 to 4	284	851	1986
Corner 2 Bedroom High Floor	1 to 4	302	906	2113
Grand Corner 2 Bedroom High Floor	1 to 4	320	960	2240
3 Bedroom Penthouse	1 to 6	481	1442	3365

26 OCT 11 – 5 MAR, 19 – 31 MAR 12	ADULTS	1 NT	3 NTS	7 NTS
Superior 1 Bedroom	1 to 2	229	686	1600
Superior 1 Bedroom High Floor	1 to 2	265	795	1853
Corner 2 Bedroom	1 to 4	320	960	2240
Grand Corner 2 Bedroom	1 to 4	338	1014	2366
Corner 2 Bedroom High Floor	1 to 4	356	1066	2488
Grand Corner 2 Bedroom High Floor	1 to 4	374	1121	2615
3 Bedroom Penthouse	1 to 6	867	2600	6067

2 night minimum stay applies 5 – 7 Aug, 30 Dec 11 – 1 Jan 12. Other prices apply 6 – 18 Mar 12 and Rugby World Cup.

Children 0 to 12 years – free when sharing with an adult and using existing bedding.

Max capacity Superior 1 Brm/Superior 1 Brm High Floor/Corner 2 Brm – 4, Grand Corner 2 Brm/Corner 2 Brm High Floor/Grand Corner 2 Brm High Floor – 6, 3 Brm Penthouse – 7.

QUAAKL

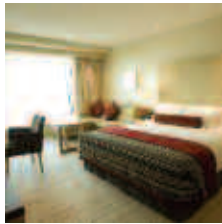
TRAVELPOINT BONUS

FREE Night Offer: Stay 7 nights in any 2 Bedroom, pay for 6.

FREE light breakfast for 2 adults daily for stays of 3 nights or more in a Superior 1 Bedroom, valid 1 Apr – 31 Aug, 26 – 31 Oct, 1 Dec 11 – 15 Jan 12.

Auckland and Surrounds

SKYCITY Grand Hotel ★★★★★



Superbly located in Auckland's CBD with the Sky Tower, casino and an endless choice of bars and restaurants in the complex.

City Centre 70m
Map page 14 Ref. 25

83 Federal Street, Auckland

PROPERTY FEATURES:

- Day spa ■ Casino ■ 24 hour reception
- Restaurants (3) ■ Bar ■ Theatre
- Pool (heated indoor) ■ Spa ■ Sundek
- Gymnasium ■ Sauna ■ Steam room
- Laundry/dry cleaning service
- Parking (undercover security) ■ Lift

ACCOMMODATION FEATURES:

- Air-conditioning ■ Mini bar
- Tea/coffee making facilities
- In-room movies (pay to view)
- Cable TV ■ Internet access (wireless)
- Ironing facilities ■ Hair dryer ■ Safe

Room serviced daily



From **\$175** PER ROOM PER NIGHT*

1 APR – 30 AUG, 1 DEC 11 – 31 JAN 12	ADULTS	1 NT	3 NTS	5 NTS
Luxury City View	1 to 2	175	525	875
Luxury Harbour View	1 to 2	206	617	1029
Superior Suite	1 to 2	338	1014	1690
Self Contained Suite	1 to 2	375	1123	1872

1 – 30 NOV 11, 1 FEB – 31 MAR 12	ADULTS	1 NT	3 NTS	5 NTS
Luxury City View	1 to 2	224	672	1119
Luxury Harbour View	1 to 2	254	762	1269
Superior Suite	1 to 2	429	1286	2143
Self Contained Suite	1 to 2	465	1395	2325

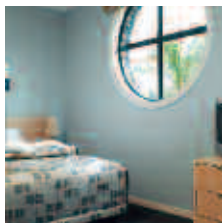
Other prices apply for Rugby World Cup.

Children 0 to 14 years – 1 child free when sharing with an adult and using existing bedding.

Max capacity Luxury City View/Luxury Harbour View – 2 adults/1 child, Superior Suite/Self Contained Suite – 2.

SCGAKL

Waves Motel, Orewa ◆◆◆◆◆



Waves Motel is located only metres from Orewa Beach, cafés and shops and offers spacious individual units.

Beach 70m
Auckland 38km
Map page 14 Ref. 1

1 Kohu Street, Orewa

PROPERTY FEATURES:

- DVD library
- Dry cleaning service
- Safety deposit box
- Parking ■ Non smoking

ACCOMMODATION FEATURES:

- Air-conditioning
- Limited cooking facilities with microwave
- Mini bar ■ CD player
- Internet access (wireless)
- Ironing facilities ■ Hair dryer

Apartment serviced daily



From **\$158** PER ROOM PER NIGHT*

1 – 30 APR 11	ADULTS	1 NT	3 NTS	5 NTS
Studio	1 to 2	168	504	840
1 Bedroom	1 to 2	188	563	938

1 MAY – 15 AUG 11	ADULTS	1 NT	3 NTS	5 NTS
Studio	1 to 2	158	473	788
1 Bedroom	1 to 2	173	518	863

16 AUG 11 – 31 MAR 12	ADULTS	1 NT	3 NTS	5 NTS
Studio	1 to 2	176	528	879
1 Bedroom	1 to 2	198	594	989
1 Bedroom Premium	1 to 2	283	849	1415
2 Bedroom	1 to 4	306	918	1529

Children 0 to 1 year – cot/bed charge payable direct. 2 to 14 years – adult prices apply.

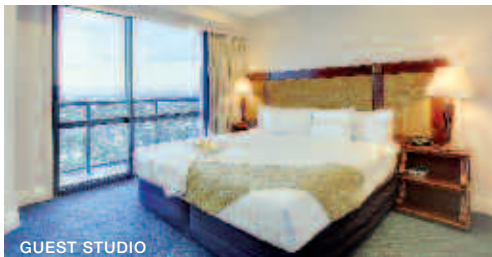
Max capacity Studio – 2, 1 Bedrooms/2 Bedroom – 4.

WAVAKW

The Spencer on Byron Hotel, Takapuna Beach ★★★★★



1 BEDROOM SUITE



GUEST STUDIO

9-17 Byron Avenue, Takapuna Beach

Gracing the beautiful North Shore skyline and blessed with panoramic ocean views, The Spencer on Byron Hotel is located close to Takapuna Beach, stunning sandy bays, scenic parks, cafés, restaurants and only 10 minutes drive from Auckland City. Surround yourself with stunning views of Auckland, the harbour, Hauraki Gulf and Rangitoto Island in a chic and comfortable setting. Rooms range from Guest Studio rooms to 1 Bedroom Suites, with the ability to interconnect into a two bedroom apartment.

The restaurant and lounges at The Spencer on Byron Hotel tempt the palate and provide a stylish ambience.

PROPERTY FEATURES:

- 24 hour reception
- Restaurant ■ Bar
- Room service (24 hour)
- Pool (heated outdoor) ■ Gymnasium
- Spa ■ Tennis court
- Internet access (wireless) ■ Library
- Laundry/dry cleaning service ■ Lift

ACCOMMODATION FEATURES:

- Air-conditioning ■ Balcony ■ Mini bar
- Kitchen with microwave and dishwasher (1 Bedroom Suites)
- Tea/coffee making facilities ■ Cable TV
- CD player ■ Internet access (broadband)
- Washer/dryer (1 Bedroom Suites)
- Ironing facilities ■ Hair dryer

Room serviced daily

Beach 400m
City Centre 9km
Map page 14 Ref. 2



From **\$123** PER ROOM PER NIGHT*



1 APR – 7 SEP, 12 – 15 SEP, 19 – 20 SEP, 26 – 28 SEP, 3 – 11 OCT 11	ADULTS	1 NT	3 NTS	5 NTS
Guest Studio	1 to 2	123	369	615
1 Bedroom Suite	1 to 2	162	485	808

25 OCT 11 – 31 MAR 12	ADULTS	1 NT	3 NTS	5 NTS
Guest Studio	1 to 2	143	428	713
1 Bedroom Suite	1 to 2	182	544	907

Other prices apply for Rugby World Cup.

Children 0 to 11 years – free when sharing with an adult and using existing bedding. Cot free of charge.

Max capacity Guest Studio – 2, 1 Bedroom Suite – 3.

SPEAKL

TRAVELPOINT BONUS

FREE upgrade to a View room for stays of 3 nights or more. (subject to availability)

FREE meals for children 0 to 11 years when dining from the kids menu with paying adults in the hotel restaurant.

Auckland's Sky Tower



A truly captivating experience awaits visitors to Auckland's Sky Tower. At 328 metres, it is the tallest tower in New Zealand offering stunning 360 degree views for up to 80 kilometres in every direction. Visitors can travel up glass fronted lifts to one of two spectacular viewing platforms; Sky Deck – New Zealand's highest viewing platform, and the 186 metre Main Observation Level.

Sky Tower also has three fantastic dining establishments – Orbit Revolving Restaurant, The Observatory Buffet Restaurant and Sky Lounge café and bar.

MAIN OBSERVATION LEVEL INCLUDES:

- 186 metre Main Observation Level
- 182 metre Sky Lounge café and bar

TOTAL TOWER EXPERIENCE ALSO INCLUDES:

- 220 metre Sky Deck viewing platform

Open: 8:30am – 10:30pm Sun to Thu (last entry 10pm)
8:30am – 11:30pm Fri and Sat (last entry 11pm)

PRICE:	1 APR – 30 AUG 11		1 NOV 11 – 31 MAR 12	
	ADULT	CHILD 6-14 YEARS	ADULT	CHILD 6-14 YEARS
Main Observation Level	\$19	\$9	\$21	\$9
Total Tower Experience	\$21	\$9	\$23	\$9

Other prices apply 1 Sep – 31 Oct 11.

SKYCITY HOTEL AUCKLAND

SKYAKL

Auckland Jet Boat Tours



Auckland Jet Boat Tours is a must do adventure tour in Auckland! From Viaduct Harbour in the heart of Downtown Auckland, join a breathtaking 35 minute jet boat tour of the stunning Auckland City coastline, Waitemata Harbour and Hauraki Gulf.

The adventure on the purpose-built, twin 300 horsepower jet boat combines high-speed thrills with jet boat manoeuvres that include 180 and 270 degree spins with sweeping turns, as you travel up to an exhilarating 85 kilometres per hour!

With plenty of breathtaking scenery and commentary, you'll be up close and personal to the Auckland City landscape and landmarks with plenty of photo opportunities to capture lasting memories.

INCLUDES:

- 35 minute jet boat ride
- Full commentary
- FREE entry to the Voyager New Zealand Maritime Museum

Departs: Daily from the Voyager New Zealand Maritime Museum, every 30 minutes between 9am – 8pm (1 – 2 Apr, 25 Sep 11 – 31 Mar 12) and 9am – 5pm (3 Apr – 24 Sep 11)

Duration: 35 minutes

PRICE:	
Adult	\$52
Child 0-14 years	\$36

AUCKLAND JET BOAT TOURS

AJBAKL

Kelly Tarlton's Antarctic Encounter & Underwater World



Kelly Tarlton's Antarctic Encounter and Underwater World offers a unique Pacific and Southern Oceans marine experience.

The Antarctic Encounter is home to New Zealand's only sub-Antarctic penguins, offering a rare opportunity to see the playful King and Gentoo penguins up close in their icy domain from aboard a Snowcat.

In the Underwater World get face-to-face with nature's assassins of the sea along the world's first curved aquarium tunnel. There you'll spot a host of killers in the Predator Tank, the graceful underwater flying of giant rays in Stingray Bay and everything from Piranha to Seahorses along Fish Alley.

Are you brave enough to swim with the sharks? Then you can't miss the adrenaline rush of a face-to-face encounter with the ocean's great predators – either with a Shark Cage, or without in a truly thrilling Shark Survival experience.

Open: 9:30am – 5:30pm daily (last entry 4:30pm)

PRICE:	1 APR – 30 SEP 11		1 OCT 11 – 31 MAR 12	
	ADULT	CHILD 4-14 YEARS	ADULT	CHILD 3-14 YEARS
Admission	\$27	\$13	\$28	\$9
Admission and Shark Cage†	\$53	N/A	\$58	N/A
Admission and Shark Survival^	\$78	N/A	\$82	N/A

† Participants must be over 9 years and 1.3 metres tall.
^ Participants must be over 17 years and be a certified diver.

KELLY TARLTON'S ANTARCTIC ENCOUNTER & UNDERWATER WORLD

KELAKL

Spectacular Auckland



A full day tour of Auckland combining a three hour coach tour with a cruise on the sparkling Waitemata Harbour and finishing with a visit to the Sky Tower – the tallest building in the Southern Hemisphere.

Travel along Queen Street – the 'Golden Mile' of Auckland's business and shopping district where buildings date back to the 1880s. Drive past New Zealand's largest university before travelling across Auckland's Harbour Bridge for expansive views of Waitemata Harbour and the city skyline. See extinct volcanic sites as you make your way through the domain, parks and garden areas.

Visit Auckland Museum to view fascinating exhibits of Maori and early European history (donation requested). Cruise the city's harbour for 90 minutes viewing famous landmarks including Rangitoto Island, Devonport and Westhaven Marina. Finish with a visit to the Sky Tower, Auckland's tallest landmark with incredible views.

INCLUDES:

- Comprehensive 3 hour coach tour
- 1 hour 30 minute harbour cruise including tea/coffee and muffins
- Entry to Sky Tower Main Observation Level
- Pick-up from selected Auckland accommodation

Departs: Daily from Auckland at 9:15am

Returns: Sky Tower at 4pm

PRICE:	
Adult	\$111
Child 5-14 years	\$56

GRAY LINE NEW ZEALAND

GRLNZL

Tours from Auckland

Best of Both Worlds



Experience the best sights of Auckland City combined with a wilderness experience – a day of contrasts. Explore the history and sights of Auckland and see how Aucklanders live and play. Just 30 kilometres from downtown Auckland is the city's largest regional park. Travel to the Arataki Centre, high in the Waitakere Ranges, to enjoy breathtaking panoramic views. Absorb the local history here before heading further west to the wild and rugged west coast. Feel the black sand beneath your feet as you stroll along some awe-inspiring beaches. Walk the easy rainforest tracks, hear native birdsong and see New Zealand's famous kauri trees and giant tree ferns.

INCLUDES:

- Narrow Neck Beach
- Mount Victoria ▪ Westhaven Marina
- Auckland Fish Market
- Arataki Centre
- Knowledgeable and experienced guide
- Refreshments ▪ Entry fees
- Return transfers from selected Auckland accommodation

Departs: Daily from Auckland at 9am

Returns: 5:30pm

PRICE:	1 APR – 30 SEP 11	1 OCT 11 – 31 MAR 12
Adult	\$157	\$165
Child 0-11 years	\$79	\$83

Full day Coromandel tour also available.

BUSH AND BEACH

BUSAKL

City and Sails



Discover the spectacular scenery and learn about the history of Auckland city. Visit Auckland city's oldest park, the Auckland Domain. Explore the boutiques, cafés and antique shops of historic Parnell. Take in the panoramic views over Auckland from Mt Eden and travel over Auckland's Harbour Bridge, past the Viaduct Harbour and along Tamaki Drive for stunning waterfront views.

Visit Kelly Tarlton's and come face to face with sharks, penguins, stingrays and many other deep sea creatures. Enjoy a luncheon cruise on a Pride of Auckland yacht where you can relax or try your hand at sailing the peaceful waters of the Waitemata.

INCLUDES:

- Mt Eden summit
- Historic Parnell Village
- Auckland Domain
- Entry to Kelly Tarlton's Antarctic Encounter and Underwater World
- Viaduct Harbour
- Luncheon cruise including dessert
- Return transfers from selected Auckland accommodation

Departs: Daily from Auckland at 8:45am

Returns: 3pm

PRICE:	1 APR – 30 SEP 11	1 OCT 11 – 31 MAR 12
Adult	\$143	\$149
Child 3-12 years	\$74	\$77

GREAT SIGHTS NEW ZEALAND

GRENZL

City, Harbour and Wine on Waiheke



Learn about the city's history and discover the spectacular scenery on this introductory half day tour of Auckland. Visit Auckland City's oldest park, the Auckland Domain and explore Parnell, a historical village transformed into boutiques, cafés and antique shops. Take in the panoramic views over Auckland from Mt Eden then travel over Auckland's Harbour Bridge, past the Viaduct Harbour and along Tamaki Drive for stunning waterfront views. Catch the ferry to Waiheke Island for a guided tour of three wineries and sample the wines whilst enjoying delicious finger food.

INCLUDES:

- Mt Eden summit
- Historic Parnell Village
- Auckland Domain
- Ferry to Waiheke Island
- Guided winery tour and finger food
- Pick-up from selected Auckland accommodation

Departs: Daily from Auckland at 8:45am

Returns: Skycity Travel Centre, Auckland at 5:30pm

PRICE:	1 APR – 30 SEP 11	1 OCT 11 – 31 MAR 12
Adult	\$150	\$153
Child 3-12 years	\$150	\$153

GREAT SIGHTS NEW ZEALAND

GRENZL

America's Cup Sailing Experience



Experience an unforgettable two hours of sailing and a unique opportunity to participate as crew on an actual America's Cup yacht. Take the helm, exert energy on the grinders or simply sit back and enjoy the action whilst sailing the beautiful Waitemata Harbour.

The America's Cup is the world's oldest and most prestigious sporting trophy and ultimate yachting regatta. Usually the domain of billionaires and elite professional yachties, these America's Cup yachts offer the unique opportunity for everyone to participate sailing on these grand-prix racing machines, and no experience is necessary! No visit to New Zealand is complete without experiencing the real Auckland, the 'City of Sails'.

INCLUDES:

- 2 hours sailing
- Experienced crew
- Entry to Maritime Museum's Blue Water Black Magic exhibition

Departs: Daily from Viaduct Harbour at 2pm (subject to tides)

Returns: 4pm

PRICE:	1 APR – 30 SEP 11	1 OCT 11 – 31 MAR 12
Adult	\$118	\$126
Child 10-15 years	\$87	\$91

SAIL NEW ZEALAND – EXPLORE NZ

SAIAKL

Pride of Auckland Dinner Cruise



Enjoy a dinner cruise on the Pride of Auckland, with tasty New Zealand fare including some traditional Kiwi favourites.

This is one of the best times of the day to experience Auckland's magnificent harbour. Enjoy great sailing and as the sun sets, watch the fairytale lights of this photogenic city come alive. Experienced crew will explain Auckland's unique sights and those wishing to participate in the sailing can do so.

Choose from a set menu at time of booking which will be served by the crew during the dinner stop at a sheltered mooring. A selection of premium New Zealand beers, wines and soft drinks are available for purchase at the on board licensed bar.

INCLUDES:

- Experienced crew
- Three course set menu

Departs: Daily from Viaduct Harbour at 5:30pm (May – Oct), 7pm (Nov – Apr)

Returns: 8pm (May – Oct), 9:30pm (Nov – Apr)

PRICE:	1 APR – 30 SEP 11	1 OCT 11 – 31 MAR 12
Adult	\$87	\$95
Child 5-15 years	\$50	\$55

THE PRIDE OF AUCKLAND – EXPLORE NZ

PRIAKL

Bay of Islands Hole in the Rock Cruise



Travel over the Auckland Harbour Bridge via the Hibiscus Coast to Paihia in the Bay of Islands. En route, stop at the Parry Kauri Park (time permitting) to view a stand of New Zealand native Kauri trees.

Visit the historic Waitangi Treaty Grounds before taking a cruise to Cape Brett Hole in the Rock on Piercy Island. The hole is large enough for the boat to cruise through (weather permitting). Whales, dolphins, huge schools of fish and hundreds of sea birds are common sights during the trip. Lunch is served on the boat along with an informative commentary.

INCLUDES:

- 3 hour Cape Brett Hole in the Rock eco cruise
- Waitangi Treaty House guided tour
- Packed lunch on board the cruise
- Deluxe glass roof coach (most departures)
- Entry fees
- Return transfers from selected Auckland accommodation

Departs: Daily from Auckland at 7:30am

Returns: 8pm

PRICE:	1 APR – 31 OCT 11	1 NOV 11 – 31 MAR 12
Adult	\$205	\$209
Child 5-14 years	\$103	\$105

GRAY LINE NEW ZEALAND

GRLNZL

Waitomo and Rotorua Deluxe



Travel on a deluxe coach through early pioneer townships, continuing through New Zealand's largest dairy and sheep farming province, the Waikato. Enjoy a guided tour of the Waitomo Caves and a gentle underground boat ride. Continue to Rotorua and visit the Agrodome, New Zealand's agricultural attraction. Enjoy a tour on a special purpose-built farm vehicle around a working farm and a sheep shearing demonstration. Visit Te Puia, home of New Zealand's Maori Arts and Crafts Institute and see a Maori cultural performance and enjoy a guided tour of the famous Whakarewarewa Geothermal area. See the Pohutu Geyser, boiling mud pools, fumaroles and colourful silica deposits. There's also an opportunity to view the Kiwi in Te Puia's nocturnal Kiwi House.

INCLUDES:

- Waitomo Glow Worm Caves guided tour
- Agrodome guided farm tour
- Maori concert at Te Puia
- Whakarewarewa Thermal area guided tour
- On board host
- Hot lunch ▪ Morning and afternoon tea
- Return transfers from selected Auckland accommodation

Departs: Daily from Auckland at 7:30am

Returns: 8:15pm

PRICE:	1 APR – 31 OCT 11	1 NOV 11 – 31 MAR 12
Adult	\$249	\$257
Child 5-14 years	\$125	\$129

GRAY LINE NEW ZEALAND

GRLNZL

Waitomo and Rotorua



This action-packed full day tour visits a number of leading attractions in the Waitomo and Rotorua regions. Travel to Waitomo and enjoy a guided tour through the Glow Worm Caves and a boat ride through the glow worm grotto.

On arrival in Rotorua see New Zealand's agricultural industry in action with a sheep shearing display and sheep dog trials at the Agrodome, plus an organic farm tour. Continue to Te Puia to witness the mighty geysers and boiling mud pools followed by a guided tour of Te Puia and a Maori cultural performance.

INCLUDES:

- Waitomo Glow Worm Caves
- Agrodome guided farm tour
- Te Puia guided tour
- Maori cultural performance
- Morning and afternoon tea
- Lunch
- Return transfers from selected Auckland accommodation

Departs: Daily from Auckland at 7:30am

Returns: 8:15pm

PRICE:		
Adult		\$247
Child 3-12 years		\$123

GREAT SIGHTS NEW ZEALAND

GRENZL