



Lamington National Park

Not far from the hustle and bustle of the Gold Coast beaches is the Hinterland. The region is a lush rainforest paradise, with gorgeous waterfalls, lookouts and winding country roads. Lamington National Park has all this and more. It's Australia's largest preserve of pristine sub tropical rainforest. Get a bird's eye view of it all on a flying fox through the rainforest or on the Tree Top Walk. Canungra is gateway to Lamington National Park and its main street is lined with small shops and cafés.

For arts, antiques and wineries, visit Mount Tamborine, where the pretty Cameron, Cedar Creek and Witches Falls can be seen. A visit to Gallery Walk's row of shops is a must. And on the weekends the country markets beckon. Browse the stalls and you'll find everything from unique handmade gifts and fashion, to fresh locally grown produce and gourmet goodies. Springbrook National Park has a reputation for its waterfalls including Purlingbrook Falls. Take the short circuit walk to the waterfall and natural arch, known as Natural Bridge. A nocturnal tour introduces the cave's inhabitants; a colony of glow worms.

Wine is also serious business in the Hinterland. Canungra Valley Vineyards, Albert River Wines and Heritage Wines are all worth taking a break from the nature trail.

## Our Favourites

Browse the arts and crafts along the Gallery Walk at Mt Tamborine

Walk through the rainforest canopy on an elevated walkway

Enjoy a picnic and wine tasting at Canungra Valley Vineyards

See Natural Bridge in Springbrook National Park

## O'Reilly's Rainforest Retreat ★★★★★



MOUNTAIN VIEW



Lamington National Park Road, Lamington National Park.  
60km from the Gold Coast

Situated in Lamington National Park, O'Reilly's Rainforest Retreat is the ideal base to explore, or just get back to nature. At night, join nature guides to explore the glow-worm grotto and world of nocturnal animals. O'Reilly's is a retreat from the world where traditions of yesteryear have been preserved with the best nature has to offer.

### PROPERTY FEATURES:

- Day spa ▪ Restaurant ▪ Bar ▪ Café ▪ Pool (plunge)
- Spa ▪ Sauna ▪ Games room ▪ Guest lounge ▪ Library
- Internet access (wireless) ▪ Tree Top Walkway
- Walking trails ▪ Guided interpretive program

### ACCOMMODATION FEATURES:

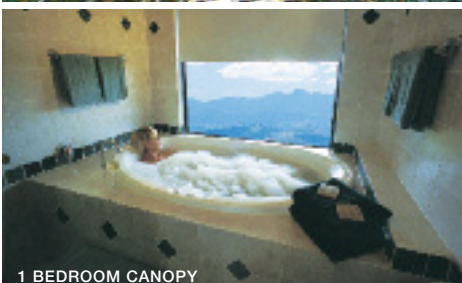
- Balcony ▪ Spa and fireplace (1 and 2 Bedrooms)
- Tea/coffee making facilities ▪ Mini bar (1 and 2 Bedrooms)

Room serviced daily

Bithongabel Single/Garden View ★★★★★☆

Map page 7 Ref. 3

Access: By car or coach from Gold Coast or Brisbane.



1 BEDROOM CANOPY

From **\$163** PER ROOM PER NIGHT\*

1 APR 11 – 31 MAR 12	ADULTS	1 NT	2 NTS	5 NTS
Bithongabel Single	1	163	326	815
Garden View	1	225	450	1125
Mountain View	2	278	556	1390
	1	268	536	1340
	2	325	650	1625
1 Bedroom Canopy	1 to 2	410	820	2050
2 Bedroom Canopy	1 to 6	520	1040	2600

2 night minimum stay applies 22 – 25 Apr, 24 Dec 11 – 3 Jan 12.

**Includes** Morning and afternoon tea daily.  
Selected guided nature based activities.

**Children** 0 to 15 years – free when sharing with 2 adults and using existing bedding.

**Max capacity** Bithongabel Single – 1, Garden View – 2, Mountain View – 3 adults or 2 adults/2 children, 1 Bedroom Canopy – 4 adults/1 child, 2 Bedroom Canopy – 6.

**ORELAM**

### SUNLOVER BONUS

FREE breakfast for 2 adults daily for stays of 3 nights or more.

FREE meals for up to 3 children 0 to 11 years when dining with paying adults (conditions apply).

## Binna Burra Mountain Lodge ★★★☆



ACACIA CABIN

**Binna Burra Road, Lamington National Park,  
35km from the Gold Coast**

Escape the stress of city life and relax, be refreshed and feel renewed by this unique World Heritage rainforest experience. Nestled in Lamington National Park, Binna Burra offers pristine surroundings with spectacular views. Experience the crisp, clear mountain air and get high on nature.

### PROPERTY FEATURES:

- Rustic wood cabin accommodation ▪ Flying fox rides
- Guided walks ▪ Spectacular views and wildlife
- Over 160km of bushwalking tracks ▪ Abseiling
- Hearty country style meals ▪ Health spa ▪ Fireplace (winter)

### ACCOMMODATION FEATURES:

- Tea/coffee making facilities ▪ Balcony (Acacia Cabins)
- Heating ▪ Share amenities (Casuarina Cabins)

Room serviced daily

**Casuarina Cabin ★★★**

Map page 7 Ref. 2

Access: By car or coach from Gold Coast or Brisbane. Private vehicle transfers also available.



ACACIA CABIN

From **\$135** PER ROOM PER NIGHT\*

### ROOM AND BREAKFAST

1 APR 11 – 31 MAR 12	ADULTS	1 NT	2 NTS	5 NTS
Casuarina Cabin	1	135	270	675
	2	190	380	950
Acacia Cabin	1	230	460	1150
	2	290	580	1450

### ROOM, BREAKFAST AND DINNER

1 APR 11 – 31 MAR 12	ADULTS	1 NT	2 NTS	5 NTS
Casuarina Cabin	1	165	330	825
	2	250	500	1250
Acacia Cabin	1	260	520	1300
	2	350	700	1750

**Includes** Guided walks and activities. Evening entertainment. Sunset cheese platter in the library.

**Children** 0 to 4 years – cot free of charge. 5 to 12 years – \$45 per child per night including breakfast. \$65 per child per night including breakfast and dinner.

**Max capacity** 4.

**BINQLD**

## O'Reilly's Mountain Villas ◆◆◆◆



**Lamington National Park Road, Lamington National Park,  
60km from the Gold Coast**

Discover deluxe self-contained villas providing the perfect nature escape with private, spacious and contemporary accommodation designed to connect with the natural surroundings. The villas are set amidst a spectacular rainforest and mountain setting surrounded by Lamington National Park.

### PROPERTY FEATURES:

- Day spa ▪ Internet access (wireless)
- Pools (2 – 1 solar heated lap pool, 1 children's wading)
- Architecturally designed villa accommodation
- Short walk to O'Reilly's Rainforest Retreat

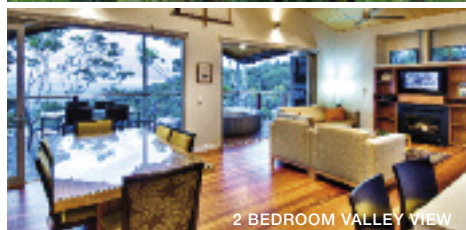
### ACCOMMODATION FEATURES:

- Air-conditioning ▪ Fireplace ▪ Balcony
- Barbecue ▪ Spa (outdoor) ▪ 2 bathrooms
- Kitchen with microwave and dishwasher
- Washer/dryer ▪ CD/DVD player

Villa serviced weekly

Map page 7 Ref. 3

Access: By car or coach from Gold Coast or Brisbane.



2 BEDROOM VALLEY VIEW

From **\$410** PER ROOM PER NIGHT\*

1 – 21 APR, 26 APR – 23 DEC 11, 4 JAN – 31 MAR 12	ADULTS	2 NTS	5 NTS	7 NTS
2 Bedroom Rainforest View	1 to 4	820	2050	2870
2 Bedroom Valley View	1 to 4	920	2300	3220
3 Bedroom Mountain Villa	1 to 6	1220	3050	4270

22 – 25 APR, 24 DEC 11 – 3 JAN 12	ADULTS	3 NTS	5 NTS	7 NTS
2 Bedroom Rainforest View	1 to 4	1380	2300	3220
2 Bedroom Valley View	1 to 4	1530	2550	3570
3 Bedroom Mountain Villa	1 to 6	1980	3300	4620

**Children** 0 to 11 years – free when sharing with an adult and using existing bedding.

**Max capacity** 2 Bedrooms – 7, 3 Bedroom – 9.

**ORMLAM**

## Peppers Ruffles Lodge & Spa ★★★★★



**423 Ruffles Road, Willow Vale  
30km from the Gold Coast**

Located in the stunning Gold Coast Hinterland this beautifully appointed lodge offers a refreshing five star experience beyond the buzz and hype of the Gold Coast. Enhance your holiday by indulging in pure style at this relaxing retreat. Attention to detail, fabulous food and panoramic views of the coastline combine with a range of leisure facilities to provide the very best of relaxing escapes.

### PROPERTY FEATURES:

- Day spa ▪ Restaurant ▪ Pool ▪ Sauna ▪ Spa
- The Lodge with lounge, dining and covered verandah
- Walking trails

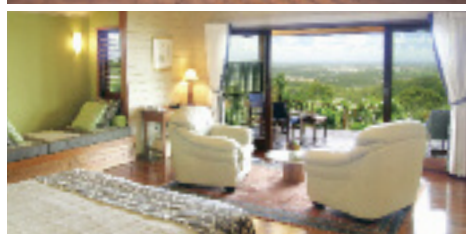
### ACCOMMODATION FEATURES:

- Air-conditioning ▪ Fan ▪ Deck ▪ Mini bar
- Tea/coffee making facilities
- Spa bath (except Garden Villas) ▪ Cable TV
- Internet access (wireless) ▪ Ironing facilities ▪ Hair dryer

Room serviced daily

Map page 7 Ref. 1

Access: By car from Gold Coast or Brisbane.



From **\$370** PER ROOM PER NIGHT\*

1 APR – 21 DEC 11, 5 JAN – 31 MAR 12 SUNDAY TO THURSDAY	ADULTS	1 NT	2 NTS	3 NTS
Garden Villa	1 to 2	420	740	1110
Chums Spa Villa	1 to 2	420	740	1110
Treehouse Pool Villa	1 to 2	570	1040	1560
Executive Suite	1 to 2	620	1140	1710

FRIDAY TO SATURDAY^	ADULTS	1 NT	2 NTS	3 NTS
Garden Villa	1 to 2	420	840	1260
Chums Spa Villa	1 to 2	420	840	1260
Treehouse Pool Villa	1 to 2	570	1140	1710
Executive Suite	1 to 2	620	1240	1860

22 DEC 11 – 4 JAN 12	ADULTS	3 NTS	5 NTS	7 NTS
Garden Villa	1 to 2	1260	2100	2940
Chums Spa Villa	1 to 2	1260	2100	2940
Treehouse Pool Villa	1 to 2	1710	2850	3990
Executive Suite	1 to 2	1860	3100	4340

^2 night minimum stay applies when stay includes a Saturday night.

**Includes** Full breakfast daily.

**Children** 0 to 14 years – not catered for.

**Max capacity** 2.

**RUFQLD**