

# Kimberley Stations and Wilderness Camps



Cockburn Ranges

Experience the ultimate Kimberley adventure staying at the wilderness camps and working cattle stations dotted throughout the Kimberley region.

Get a true taste of the Australian outback with accommodation at the wilderness camps consisting of permanent safari tents with either share or private facilities, while the stations offer a range of accommodation options, from safari tents to guest rooms in the homestead.

Wilderness camps are the ideal place to stay when travelling along the Gibb River Road, providing a warm welcome and delicious homestyle meals. You'll find Mornington Wilderness Camp and Bell Gorge Wilderness Lodge located between Broome and Kununurra.

Head further north to Mitchell Falls Wilderness Lodge near Mitchell Plateau, or drop in on Marunbabidi on the Kalumburu Road. Found on the upper King Edward River, the camp provides access to a region rich with Aboriginal culture. Journey along Kalumburu Road to get to The Bush Camp at Faraway Bay, a truly unique retreat located overlooking the Timor Sea.

Within Purnululu National Park is the Bungle Bungle Wilderness Lodge and outback cattle experiences can be found at Home Valley Station and El Questro.

## Our Favourites

Explore the gorges along the Gibb River Road

Take a walk to Cathedral Gorge in the Bungle Bungles

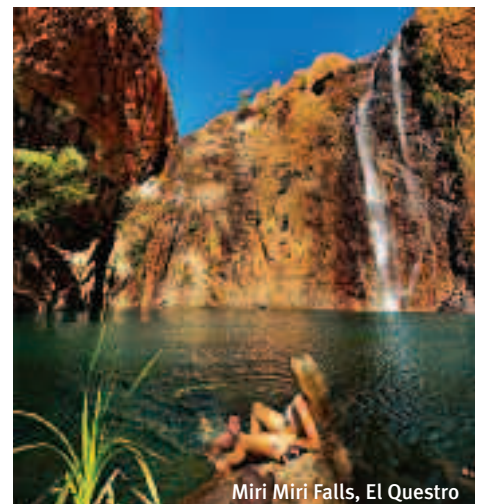
Join the privileged few fishing the pristine waters of Admiralty Gulf

Relax at Zebedee Thermal Springs at El Questro



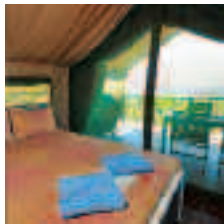
## FIND YOUR ACCOMMODATION

REF.	PROPERTY	PAGE
8	Bell Gorge Wilderness Lodge ◆◆◆	39
6	Bungle Bungle Wilderness Lodge ◆◆◆◆	39
5	El Questro Homestead ◆◆◆◆◆	37
5	El Questro Wilderness Park – Emma Gorge Resort ◆◆◆◆	37
5	El Questro Wilderness Park – Station Bungalows ◆◆◆◆	37
1	Faraway Bay, The Bush Camp ◆◆◆◆	38
4	Home Valley Station ◆◆◆◆	38
9	Kooljaman at Cape Leveque ◆◆◆	37
3	Marunbabidi Wilderness Camp ◆◆◆	39
2	Mitchell Falls Wilderness Lodge ◆◆◆◆◆	39
7	Mornington Wilderness Camp ◆◆◆	38



Miri Miri Falls, El Questro

## Kooljaman at Cape Leveque ◆◆◆◆



Surrounded by a spectacular coastline and stunning beaches. Enjoy a range of activities or relax and soak up the isolation and beauty of the area.  
**Broome 220km**  
**Map page 36 Ref. 9**

1 Cape Leveque Road, Dampier Peninsula

### PROPERTY FEATURES:

- Restaurant (open Apr – Oct)
- Barbecue area
- Shop/kiosk
- Guest laundry ▪ Parking

### ACCOMMODATION FEATURES:

- Ocean views (Family Safari Tents)
- Fan ▪ Balcony
- Limited cooking facilities
- Barbecue

Note: Unit and Log Cabin have shared facilities

Room serviced every 3 days for stays of 5 nights or more



From **\$90** PER ROOM PER NIGHT\*

1 APR – 31 OCT 11	ADULTS	2 NTS	5 NTS	7 NTS
Unit	1 to 2	220	550	770
Log Cabin	1 to 2	280	700	980
Ensuite Cabin	1 to 2	330	825	1155
Family Safari Tent	1 to 2	520	1300	1820
1 NOV 11 – 31 MAR 12	ADULTS	2 NTS	5 NTS	7 NTS
Unit	1 to 2	180	450	630
Log Cabin	1 to 2	220	550	770
Ensuite Cabin	1 to 2	260	650	910
Family Safari Tent	1 to 2	440	1100	1540

**Children** 0 to 2 years – free when sharing with an adult and using existing bedding.  
 3 to 16 years – \$10 per child per night.

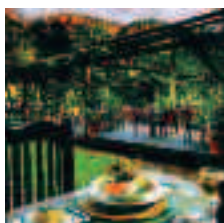
**Max capacity** Unit/Log Cabin/Family Safari Tent – 4, Ensuite Cabin – 5.

**KOOKIM**

## El Questro Wilderness Park – Emma Gorge Resort ◆◆◆◆



EMMA GORGE FALLS



Hidden within the fiery red of El Questro's Cockburn Ranges, the tented cabins allow you to stay in comfort and style, while still remaining close to nature.

**Kununurra 110km**  
**Map page 36 Ref. 5**

El Questro Road, East Kimberley

### PROPERTY FEATURES:

- Restaurant
- Bar
- Pool
- Guest laundry
- Boutique

### ACCOMMODATION FEATURES:

- Fan
- Hair dryer
- Private bathroom

Room serviced daily

From **\$180** PER ROOM PER NIGHT\*

1 APR – 30 OCT 11	ADULTS	1 NT	3 NTS	5 NTS
Deluxe Tented Cabin	1 to 2	270	810	1350

Park is closed 1 Nov 11 – 31 Mar 12. \$17.50 per person wilderness park permit payable direct, valid for 7 days.

**Children** 0 to 12 years – free when sharing with an adult and using existing bedding.

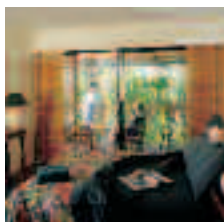
**Max capacity** 4.

**ELQKIM**

### TRAVELPOINT BONUS

FREE Night Offer: Stay 3 nights, pay for 2, valid 1 Apr – 20 May, 1 Sep – 30 Oct 11.

## El Questro Wilderness Park – Station Bungalows ◆◆◆◆



This is the central hub of El Questro Wilderness Park set on the banks of the Pentecost River, offering campfire entertainment most evenings.

**Kununurra 110km**  
**Map page 36 Ref. 5**

El Questro Road, East Kimberley

### PROPERTY FEATURES:

- Restaurant
- Bar
- Guest laundry
- Sundry shop
- Fuel outlet

### ACCOMMODATION FEATURES:

- Air-conditioning ▪ Fan
- Balcony (River View Bungalows)
- Tea/coffee making facilities
- Private bathroom
- Ironing facilities
- Hair dryer

Room serviced daily

From **\$199** PER ROOM PER NIGHT\*

1 APR – 30 OCT 11	ADULTS	1 NT	3 NTS	5 NTS
Station Bungalow Garden View	1 to 2	299	897	1495
Station Bungalow River View	1 to 2	329	987	1645

Park is closed 1 Nov 11 – 31 Mar 12. \$17.50 per person wilderness park permit payable direct, valid for 7 days.

**Children** 0 to 12 years – free when sharing with an adult and using existing bedding.

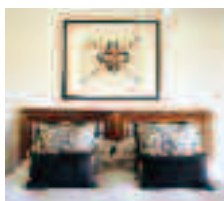
**Max capacity** 6.

**ELQKIM**

### TRAVELPOINT BONUS

FREE Night Offer: Stay 3 nights, pay for 2, valid 1 Apr – 20 May, 1 Sep – 30 Oct 11.

## El Questro Homestead ◆◆◆◆◆



CHAMBERLAIN GORGE

Experience the untamed Kimberley in absolute luxury on this million acre working cattle station, El Questro Homestead.

**Kununurra 110km**  
**Map page 36 Ref. 5**

El Questro Road, East Kimberley

### PROPERTY FEATURES:

- Exclusive dining
- Bar
- Pool
- Use of self-drive boat on private billabong
- Tennis court

### ACCOMMODATION FEATURES:

- Air-conditioning ▪ Verandah ▪ Fan
- Tea/coffee making facilities
- Mini bar ▪ Ironing facilities
- CD player ▪ iPod docking station
- Private bathroom ▪ Bathrobes
- Hair dryer

Room serviced twice daily

From **\$1512** PER ROOM PER NIGHT\*

1 APR – 30 OCT 11	ADULTS	2 NTS	3 NTS	5 NTS
Homestead	2	3780	4536	7560
Chamberlain Gorge	2	4540	5448	9080
Chamberlain Suite	2	5180	6216	10360

Homestead is closed 1 Nov 11 – 31 Mar 12. Sole use prices also available.

**Includes** Breakfast, lunch and dinner daily.  
 French champagne, selected Australian wines and non-alcoholic beverages.  
 Selected touring.  
 Wilderness park permit.  
 Use of all non-motorised watersports and motorised dinghies.

**Children** 0 to 12 years – not catered for.

**Max capacity** 2.

**ELQKIM**

# Kimberley Stations and Wilderness Camps

## Home Valley Station ◆◆◆◆



Gibb River Road, East Kimberley

Home Valley Station is the ultimate outback experience offering accommodation choices from rugged adventure with a twist of luxury, to a more intimate experience.

Explore the surrounding area of towering gorges, sparkling waterholes, untouched beaches, billabongs and waterfalls by enjoying the many activities and tours on offer at the station. Also try your hand at catching the elusive barramundi as Home Valley hosts some of the best fishing locations in the country.

After a day of exploring, relax at Home Valley's own Dusty Bar and Grill with a cool drink and enjoy quality Australian cuisine from the à la carte menu.

**PROPERTY FEATURES:**

- Restaurant ▪ Bar ▪ General store
- Pool ▪ Internet access (wireless)

**ACCOMMODATION FEATURES:**

- Air-conditioning (except Eco Tents)
- Fan ▪ Insect screens
- Tea/coffee making facilities (except Eco Tents)
- Hair dryer (except Eco Tents)
- Television (except Eco Tents)

**GRASS CASTLE ROOMS ALSO FEATURES:**

- Cable TV (free)
- Mini bar
- Bathrobes
- Ironing facilities
- Telephone

Room serviced daily

Kununurra 120km  
Map page 36 Ref. 4

From **\$190** PER ROOM PER NIGHT\*



1 APR – 31 OCT 11	ADULTS	1 NT	3 NTS	5 NTS
Eco Tent	1 to 2	190	570	950
Guesthouse Room	1 to 2	240	720	1200
Grass Castle	1 to 2	450	1350	2250

Station is closed 1 Nov 11 – 31 Mar 12.

**Includes** Grass Castle includes Full breakfast for 2 adults daily.

**Children** 0 to 12 years – free when sharing with an adult and using existing bedding, room only.

**Max capacity** Eco Tent – 2 adults/2 children, Homestead Guesthouse Room – 2, Grass Castle – 2 adults/1 child.

**HOMKIM**

**TRAVELPOINT EXCLUSIVE**  
FREE souvenir pack to the value of \$100 per stay.

## Mornington Wilderness Camp ◆◆◆



A comfortable base from which to explore the gorges of Mornington Sanctuary. All proceeds go to the conservation of wildlife in the Kimberley.

Kununurra 565km  
Map page 36 Ref. 7

Mornington Sanctuary (88km south of Mt House turnoff, Gibb River Road)

**PROPERTY FEATURES:**

- Restaurant
- Bar

**ACCOMMODATION FEATURES:**

- Balcony
- Tea/coffee making facilities
- Mini bar
- Ensuite

Room serviced daily

From **\$295** PER ROOM PER NIGHT\*

1 APR – 30 OCT 11	ADULTS	1 NT	3 NTS	5 NTS
Safari Tent	1	295	885	1475
	2	500	1500	2500

Camp is closed 31 Oct 11 – 31 Mar 12. \$25 Wildlife Sanctuary Pass per vehicle per stay payable direct.

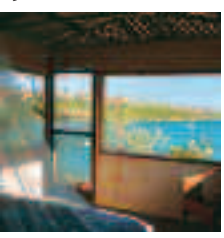
**Includes** Breakfast, lunch and dinner daily.

**Children** 0 to 1 years – cot/bed charge payable direct. 2 to 12 years – \$120 per child per night.

**Max capacity** 3 adults or 2 adults/2 children.

**MORDRB**

## Faraway Bay, The Bush Camp ◆◆◆◆



A truly unique retreat nestled on a rocky hilltop overlooking the Timor Sea offering a rare wilderness encounter, beauty and isolation. You've never been this far away.

Kununurra 280km  
Map page 36 Ref. 1

Diamond Coast, North Kimberley

**PROPERTY FEATURES:**

- 360 degree views of the spectacular coastline and ranges
- Maximum 12 guests at any time, privacy ensured
- Open-air dining in the Eagle Lodge, perfect for lounging and daydreaming
- Plunge pool refreshed by spring-fed water
- 13 metre ocean-going Diamond Lass and a range of smaller vessels with skipper and guide at your disposal at any time
- Guest laundry

**ACCOMMODATION FEATURES:**

- Fan ▪ Mosquito nets
- Shared facilities (Standard Cabin)
- Ensuite (Ensuite Cabin)

Room serviced daily on request

From **\$2056** PER ROOM PER NIGHT\*

1 APR – 31 OCT 11	ADULTS	3 NTS	4 NTS	5 NTS
Standard Cabin	2	6920	8600	10280
Ensuite Cabin	2	7520	9400	11280

Camp is closed 1 Nov 11 – 31 Mar 12.

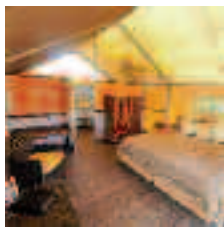
**Includes** All meals and beverages daily. All activities and touring. Return scenic air transfers from Kununurra. Return transfers from Kununurra accommodation to air charter.

**Children** 0 to 1 years – cot/bed charge payable direct. 2 to 14 years – adult prices apply.

**Max capacity** 2.

**BUSKIM**

## Bungle Bungle Wilderness Lodge ◆◆◆◆



Located on Bellburn Creek in the heart of the Purnululu National Park, this state of the art wilderness lodge raises accommodation to a new level.

Kununurra 312km  
Map page 36 Ref. 6

Purnululu National Park

### PROPERTY FEATURES:

- Permanent hosts ▪ Dining room
- Homestyle meals served with a glass of wine at dinner
- Lunch on request (extra charge)
- Licensed bar (small selection)
- Low voltage lighting

### ACCOMMODATION FEATURES:

- Twin/double bedding (off the ground)
- Private ensuite ▪ Linen and doonas
- Side tables ▪ Lighting

### Mini service daily



From **\$369** PER ROOM PER NIGHT\*

11 APR – 20 OCT 11	ADULTS	1 NT	3 NTS	5 NTS
Standard Twin Tent	1	410	1230	1845
	2	480	1440	2160
Superior Twin/Double	1	455	1365	2048
	2	540	1620	2430

Lodge is closed 1 – 10 Apr, 21 Oct 11 – 31 Mar 12. \$11 per vehicle per day national park entrance fee payable direct.

**Includes** Breakfast and dinner daily.

**Children** 0 to 14 years – child prices on application.

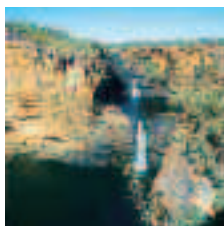
**Max capacity** Standard Twin – 2, Superior Twin/Double – 3.

**KIMKNX**

### TRAVELPOINT BONUS

Stay 5 nights at any combination of the Kimberley Wilderness Camps and Lodges (Bell Gorge, Marunbabidi, Mitchell Falls or Bungle Bungle) and receive 10% off the total price.  
(5 night price includes 10% discount)

## Mitchell Falls Wilderness Lodge ◆◆◆◆



Close to Mitchell Falls, a major Kimberley attraction, this lodge has minimal impact on the area leaving guests with an untouched natural habitat to explore.

Kununurra 450km  
Map page 36 Ref. 2

Mitchell Falls (70km west of Kalumburu and Mitchell Plateau Road junction)

### PROPERTY FEATURES:

- Permanent hosts ▪ Dining room
- Homestyle meals served with a glass of wine at dinner ▪ Low voltage lighting
- Lunch on request (extra charge)

### ACCOMMODATION FEATURES:

- Twin bedding (off the ground)
- Private ensuite ▪ Linen and doonas
- Side tables ▪ Lighting

Note: Camp does not hold a liquor licence, guests are permitted to bring drinks.

### Mini service daily



From **\$369** PER ROOM PER NIGHT\*

16 MAY – 14 OCT 11	ADULTS	1 NT	3 NTS	5 NTS
Tent	1	410	1230	1845
	2	480	1440	2160

Lodge is closed 1 Apr – 15 May, 15 Oct 11 – 31 Mar 12. \$11 per vehicle per day national park entrance fee payable direct.

**Includes** Breakfast and dinner daily.

**Children** 0 to 14 years – child prices on application.

**Max capacity** 2 adults/1 child.

**KIMKNX**

### TRAVELPOINT BONUS

Stay 5 nights at any combination of the Kimberley Wilderness Camps and Lodges (Bell Gorge, Marunbabidi, Mitchell Falls or Bungle Bungle) and receive 10% off the total price.  
(5 night price includes 10% discount)

## Bell Gorge Wilderness Lodge ◆◆◆



Located between Bell Gorge and Galvans Gorge, this picturesque camp is the perfect base from which to explore the Kimberley.

Kununurra 485km  
Derby 221km  
Map page 36 Ref. 8

Gibb River Road

### PROPERTY FEATURES:

- Permanent hosts ▪ Dining room
- Homestyle meals served with a glass of wine at dinner
- Lunch on request (extra charge)
- Low voltage lighting

### ACCOMMODATION FEATURES:

- Twin bedding (off the ground)
- Private ensuite ▪ Linen and doonas
- Side tables ▪ Lighting

Note: Camp does not hold a liquor licence, guests are permitted to bring drinks.

### Mini service daily



From **\$369** PER ROOM PER NIGHT\*

25 APR – 13 OCT 11	ADULTS	1 NT	3 NTS	5 NTS
Tent	1	410	1230	1845
	2	480	1440	2160

Lodge is closed 1 – 24 Apr, 14 Oct 11 – 31 Mar 12.

**Includes** Breakfast and dinner daily.

**Children** 0 to 14 years – child prices on application.

**Max capacity** 2.

**KIMKNX**

### TRAVELPOINT BONUS

Stay 5 nights at any combination of the Kimberley Wilderness Camps and Lodges (Bell Gorge, Marunbabidi, Mitchell Falls or Bungle Bungle) and receive 10% off the total price.  
(5 night price includes 10% discount)

## Marunbabidi Wilderness Camp ◆◆◆



Perfectly positioned beside the upper King Edward River, this camp provides access to a region rich in Aboriginal culture and unique flora and fauna.

Kununurra 350km  
Map page 36 Ref. 3

Kalumburu Road (off Gibb River Road)

### PROPERTY FEATURES:

- Permanent hosts ▪ Dining room
- Homestyle meals served with a glass of wine at dinner
- Lunch on request (extra charge)
- Low voltage lighting

### ACCOMMODATION FEATURES:

- Twin bedding (off the ground)
- Shared facilities ▪ Linen and doonas
- Side tables ▪ Lighting

Note: Camp does not hold a liquor licence, guests are permitted to bring drinks.

### Mini service daily



From **\$243** PER ROOM PER NIGHT\*

27 APR – 15 OCT 11	ADULTS	1 NT	3 NTS	5 NTS
Tent	1	270	810	1215
	2	400	1200	1800

Lodge is closed 1 – 26 Apr, 16 Oct 11 – 31 Mar 12.

**Includes** Breakfast and dinner daily.

**Children** 0 to 14 years – child prices on application.

**Max capacity** 2.

**KIMKNX**

### TRAVELPOINT BONUS

Stay 5 nights at any combination of the Kimberley Wilderness Camps and Lodges (Bell Gorge, Marunbabidi, Mitchell Falls or Bungle Bungle) and receive 10% off the total price.  
(5 night price includes 10% discount)