



Parachilna Gorge, Flinders Ranges National Park

## Our Favourites

Take a scenic flight over Wilpena Pound

Explore Flinders Ranges National Park by bike

Hike the Heysen Trail in the Flinders Ranges

Visit the Wadlata Outback Centre in Port Augusta

Enjoy a beer at the world's most isolated pub at William Creek

Tour the scenic Breakaways or Painted Desert from Coober Pedy

Noodle for opals at Coober Pedy or visit an underground home

Join the Outback Mail Run and deliver mail to outback stations

It's a whole other world in the outback, and one that's worth a visit. Put yourself in the early explorers' shoes, walking the Flinders Ranges National Park past ancient gorges and beautiful ranges. The rocky peaks of Mount Remarkable beg to be climbed, while the Southern Flinders Flavours Trail provides the gourmet treats to keep you in peak form. Some of the best sights can be seen on foot, or you can take to the road by bicycle or 4WD.

The towering rock walls, gorges and Aboriginal rock art of Wilpena Pound are the centrepiece of the Flinders' outback. Soar over the area on a scenic flight, past dramatic peaks and vibrant red earth.

The outback characters are as unique as the scenery, with a way of life unlike anywhere else. Half the population of opal mining town Coober Pedy lives underground. Other outback locals live so far away they love a visit from travellers who join the Outback Mail Run; a customary trip to Oodnadatta and William Creek.

With such a vast and varied landscape, there's plenty of opportunity for adventure. Head out to the massive salt sink that is Lake Eyre – it has only filled to capacity three times in the past 150 years. From Coober Pedy try your luck at opal digging or visit the colourful sandstone outcrops known as The Breakaways. Visit friendly Port Augusta, your gateway to the outback and Flinders Ranges. For the experienced adventurer, follow a network of springs and creeks as you travel the iconic Oodnadatta, Birdsville and Strzelecki Tracks through the heart of the outback.



Coober Pedy

### FIND YOUR ACCOMMODATION

REF.	PROPERTY	PAGE
1	Desert Cave Hotel, Coober Pedy ★★★★★	39
4	Majestic Oasis Apartments, Port Augusta ★★★★★	39
1	Opal Inn Hotel Motel, Coober Pedy ★★★	39
4	Port Augusta BIG4 Holiday Park ★★★★★☆	39
2	Prairie Hotel, Parachilna ◆◆◆◆	38
3	Rawnsley Park Station, Wilpena ★★★★★☆	38
3	Wilpena Pound Resort ★★★☆	38

# Flinders Ranges

## Wilpena Pound Resort ★★★☆



### Flinders Ranges National Park

Stay at Wilpena Pound Resort in the Flinders Ranges and discover some of the secrets of the rugged ancient Outback mountains, where the first signs of 'life on earth' have been found.

The resort is an easy pleasant drive on sealed roads, 430 kilometres north of Adelaide, located on the banks of Wilpena Creek amid stately red gums and native pines. See some of Australia's unique native wildlife in their natural environment and experience some of the best four wheel driving in Australia.

The resort's Visitor Information Centre provides planning help for all self guided walks on bush trails and self drive 4WD tracks and offers organised guided walking tours, 4WD tours and 'must do' scenic flights.

The Wilpena Pound Resort offers warm, outback hospitality and a wide range of services and facilities for all tastes and budgets.

### PROPERTY FEATURES:

- Restaurant ▪ Bistro ▪ Bar ▪ Pool ▪ Barbecue area
- Mini supermarket ▪ Shuttle to Pound entrance

### ACCOMMODATION FEATURES:

- Air-conditioning ▪ Satellite TV ▪ Mini refrigerator
- Tea/coffee making facilities ▪ Hair dryer
- Limited cooking facilities with microwave (Edeowie rooms) ▪ Ironing facilities

### ACTIVITIES AVAILABLE AT AN EXTRA CHARGE:

- Mountain Top Spectacular half day tour
- Corridors Thru Time half day tour
- 20 or 30 minute scenic flights

### Room serviced daily

Hawker 55km  
Map page 37 Ref. 3



From **\$185** PER ROOM PER NIGHT\*

1 APR – 30 NOV 11	ADULTS	1 NT	2 NTS	3 NTS
Brachina/Aroona	1 to 2	216	432	648
Heysen Deluxe	1 to 2	247	494	741
Edeowie	1 to 2	278	556	834

1 DEC 11 – 31 MAR 12	ADULTS	1 NT	2 NTS	3 NTS
Brachina/Aroona	1 to 2	185	370	555
Heysen Deluxe	1 to 2	216	432	648
Edeowie	1 to 2	247	494	741

Room and Breakfast prices also available.

**Children** 0 to 12 years – free when sharing with an adult and using existing bedding.

**Max capacity** Brachina – 2, Aroona/Heysen Deluxe – 4, Edeowie – 6. **WILWIP**

### ESCAPE PACKAGE

#### INCLUDES:

- 2 nights accommodation ▪ Full breakfast daily
- Half day 4WD tour including morning or afternoon tea
- 20 minute scenic flight over Wilpena Pound

PRICE PER PERSON	ADULTS	2 NTS	EXTRA NTS
1 APR – 30 NOV 11			
Brachina/Aroona	2	556	129
Heysen Deluxe	2	584	144
1 DEC 11 – 31 MAR 12			
Brachina/Aroona	2	529	113
Heysen Deluxe	2	556	129

Child prices on application. Extra nights include full breakfast.

### LAKE EYRE PACKAGE

#### INCLUDES:

- 3 nights accommodation ▪ Full breakfast daily
- Half day 4WD tour including morning or afternoon tea
- 4 hour scenic flight over Lake Eyre

PRICE PER PERSON	ADULTS	3 NTS	EXTRA NTS
1 APR – 30 NOV 11			
Brachina/Aroona	2	1399	129
Heysen Deluxe	2	1441	144

Child prices on application. Extra nights include full breakfast.

## Rawnsley Park Station, Wilpena ★★★☆



This 12,000 hectare station, on the southern face of Wilpena Pound adjoining the Flinders Ranges National Park, is a true outback experience.

Town Centre 21km  
Map page 37 Ref. 3

### Wilpena Road, Wilpena, Flinders Ranges

#### PROPERTY FEATURES:

- Restaurant ▪ General store ▪ Pool
- Mountain bike hire, 4WD tours and scenic flights available (extra charge)

#### ACCOMMODATION FEATURES:

- Air-conditioning ▪ Kitchen with microwave
- Verandah with barbecue (Villas)
- Dishwasher (except Units) ▪ Hair dryer
- CD/DVD player (except Units)
- Night sky viewing panel (Villas)

#### Room serviced daily

Holiday Unit ★★★☆  
Arkapena Homestead ◆◆◆◆◇



From **\$145** PER ROOM PER NIGHT\*

1 APR 11 – 31 MAR 12	ADULTS	1 NT	2 NTS	5 NTS
1 Bedroom Holiday Unit	1 to 2	145	290	725
2 Bedroom Holiday Unit	1 to 2	175	350	875
1 Bedroom Eco Villa <sup>^</sup>	1 to 2	360	720	1800
2 Bedroom Eco Villa	1 to 2	410	820	2050
Arkapena Homestead	1 to 2	510	1020	2550

**Includes** Light breakfast provisions daily.

**Children** 0 to 1 years – cot free of charge.  
2 to 15 years – adult prices apply.

**Max capacity** 1 Brms – 2, 2 Brms/Arkapena Homestead – 4. **RAWSAU**

### TRAVELPOINT EXCLUSIVE

<sup>^</sup> FREE Sunset on the Chase tour for 2 adults for stays of 3 nights or more.

### TRAVELPOINT BONUS

<sup>^</sup> FREE Night Offer: Stay 3 nights, pay for 2, valid 1 Jun – 31 Jul 11.

## Prairie Hotel, Parachilna ◆◆◆◇



Australia's hip outback hotel where the desert meets the Flinders Ranges Outback.

Hawker 90km  
Port Augusta 195km  
Map page 37 Ref. 2

### Corner High Street and West Terrace, Parachilna

#### PROPERTY FEATURES:

- Restaurant ▪ Bar
- Pool ▪ Bicycle hire
- Internet access (wireless)
- Guest laundry ▪ Non smoking

#### ACCOMMODATION FEATURES:

- Air-conditioning ▪ Fan
- Tea/coffee making facilities
- Hair dryer (except Heritage rooms)
- Ironing facilities (except Heritage rooms)
- Spa bath (Executive rooms)

#### Room serviced daily



From **\$195** PER ROOM PER NIGHT\*

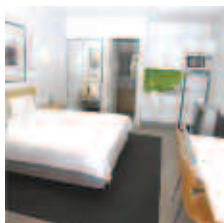
1 APR 11 – 8 JAN, 27 FEB – 31 MAR 12	ADULTS	1 NT	2 NTS	3 NTS
Heritage	1 to 2	195	390	585
Deluxe	1 to 2	225	450	675
Executive	1 to 2	320	640	960

Property closed 9 Jan – 26 Feb 12.

**Children** 0 to 2 years – cot/bed charge payable direct.  
3 to 14 years – adult prices apply.

**Max capacity** Heritage – 2, Deluxe – 3, Executive – 5. **PRASAU**

## Majestic Oasis Apartments, Port Augusta ★★★★★



An 'Oasis in the Outback' overlooking the waters of the upper Spencer Gulf, three hours drive from Adelaide.

Town Centre 50m  
Map page 37 Ref. 4

Marryatt Street, Port Augusta

### PROPERTY FEATURES:

- Barbecue areas (4) ■ Pool
- Internet facilities ■ Parking (security)

### ACCOMMODATION FEATURES:

- Air-conditioning
- Water views (except Executive Apartments)
- Limited cooking facilities
- In-room movies (pay to view)
- Cable TV ■ Spa bath (Spa Suites)
- Internet access (broadband)
- CD/DVD player ■ Safe ■ Laundry

Room serviced weekly



From **\$132** PER ROOM PER NIGHT\*

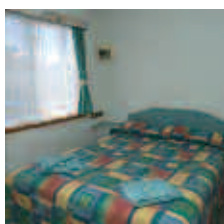
1 APR 11 – 31 MAR 12	ADULTS	1 NT	2 NTS	3 NTS
Executive Studio	1 to 2	132	264	396
Executive 1 Bedroom	1 to 2	143	286	429
Superior 1 Bedroom	1 to 2	171	342	513
Spa Suite	1 to 2	174	348	522
Superior 2 Bedroom	1 to 4	192	384	576

**Children** 0 to 12 years – free when sharing with an adult and using existing bedding. Cot free of charge.

**Max capacity** Executive Studio/Executive 1 Bedroom/Spa Suite – 2, Superior 1 Bedroom – 3, Superior 2 Bedroom – 5.

OASPUG

## Port Augusta BIG4 Holiday Park ★★★★★☆



Offering comfortable units, situated on the tip of Spencer Gulf at Port Augusta, the perfect base to explore the Outback.

Town Centre 3.5km  
Map page 37 Ref. 4

Corner Stokes Terrace and Highway One, Port Augusta

### PROPERTY FEATURES:

- Pools (2 – 1 outdoor, 1 children's)
- Barbecue area ■ Camp kitchen ■ Kiosk
- Children's playground ■ Guest laundry
- Games room ■ Internet facilities
- Parking ■ Non smoking

### ACCOMMODATION FEATURES:

- Air-conditioning ■ Fan
- Spa bath (Spa Units)
- Limited cooking facilities (Spa Units)
- Kitchen (Deluxe Units) ■ Microwave
- Cable TV ■ Balcony (Deluxe Units)
- Ironing facilities

Apartment serviced weekly

From **\$130** PER ROOM PER NIGHT\*

1 APR 11 – 31 MAR 12	ADULTS	1 NT	2 NTS	5 NTS
Spa Unit	1 to 2	130	390	650
Deluxe Unit	1 to 2	140	420	700

**Children** 0 to 1 years – cot free of charge.  
2 to 15 years – adult prices apply.

**Max capacity** Spa Unit – 2, Deluxe Unit – 5.

BIGPUG

## Opal Inn Hotel Motel, Coober Pedy ★★★



Situated close to the bus depot in the centre of Coober Pedy, with comfortable family style motel rooms.

Town Centre 10m  
Map page 37 Ref. 1

Hutchison Street, Coober Pedy

### PROPERTY FEATURES:

- Restaurant ■ Bars (3)
- Barbecue area
- Opal and souvenir shop
- Bottle shop
- Gaming facilities
- Guest laundry
- Business facilities

### ACCOMMODATION FEATURES:

- Air-conditioning
- Tea/coffee making facilities
- Ironing facilities ■ Hair dryer

Room serviced daily



From **\$130** PER ROOM PER NIGHT\*

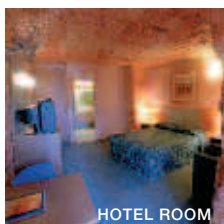
1 APR 11 – 31 MAR 12	ADULTS	1 NT	2 NTS	3 NTS
Standard Motel	1	130	260	390
	2	140	280	420
	3	150	300	450
	4	160	320	480

**Children** 0 to 4 years – cot free of charge.  
5 to 12 years – adult prices apply.

**Max capacity** 4.

OPACPD

## Desert Cave Hotel, Coober Pedy ★★★★★



Situated in the main street of Coober Pedy, experience dug-out style living in the world's most sophisticated underground hotel.

Town Centre 10m  
Map page 37 Ref. 1

Hutchison Street, Coober Pedy

### PROPERTY FEATURES:

- Restaurant ■ Bar ■ Café
- Room service (limited)
- Pool ■ Internet facilities
- Guest laundry
- Business facilities

### ACCOMMODATION FEATURES:

- Mini bar
- Tea/coffee making facilities
- In-room movies (free)
- Internet access (wireless)
- Ironing facilities ■ Hair dryer

Room serviced daily



From **\$225** PER ROOM PER NIGHT\*

1 APR 11 – 31 MAR 12	ADULTS	1 NT	2 NTS	3 NTS
Standard Hotel Aboveground	1 to 2	225	450	675
Hotel Room Underground	1 to 2	240	480	720

**Children** 0 to 11 years – free when sharing with an adult and using existing bedding.

**Max capacity** Standard Hotel – 4, Hotel Room – 3.

DESCPD

